



RiskIQ i3:

COVID-19 Daily Update

03/18/2020

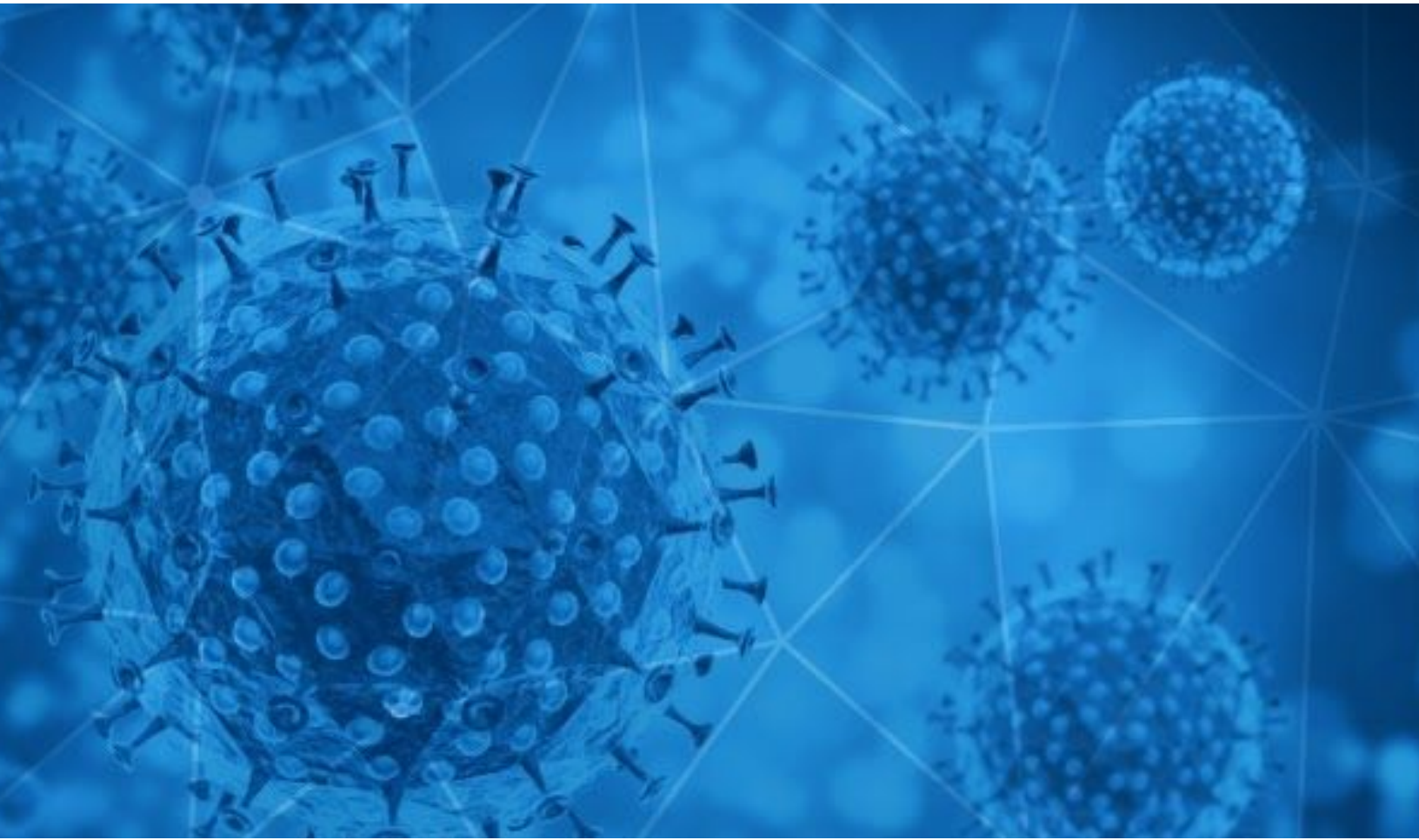


Table of Contents

Methodology	3
Disclaimer	3
Notable Events: Previous 24 Hours	4
Digital Exploitation	5
Blacklist Data	5
COVID-19 Email Spam Statistics	5
Consumer Landscape	9
Facts and Figures at a Glance	10
Global	10
U.S.	10
Virus Distribution Data	11
Newly-Impacted Regions	11
Case Totals Near Major Cities	11
Active States of Emergency	13
Governmental Guidance	14
CDC	14
WHO	14
Department of State	15
State & Local Governments	15
Publicly-Available Company Policies	17
Office Closures	17
Remote Work/Interviews	17
Travel Restrictions	20
School Closures Near Major Cities	23
Map of Active School Closures - U.S.	27
Map of Active Reported Cases - U.S.	28
Map of Active Reported Cases - Global	29

Methodology

The information provided in this report is limited to open source and publicly available data discovered through standard, commonly known browsing techniques and keyword searches. To provide efficient results, RiskIQ may use websites that require payment in exchange for aggregation of data that is otherwise publicly available without payment and could be obtained by anyone accessing the correct sites or engaging the correct third parties to obtain the information. Information presented in this report is cross-checked against multiple sources for full verification; however, some assessments and conclusions are based on incomplete information and represent the RiskIQ analyst's judgment based on patterns and data available.

Disclaimer

The information provided in this report is "as-is" and Customer acknowledges and agrees that RiskIQ makes no representation or warranty, express or implied, as to the accuracy or completeness of the information. Customer agrees that RiskIQ shall not have any liability resulting from Customer's use of this information.

Notable Events: Previous 24 Hours

The United States reported 6,519 confirmed cases of COVID-19 across all fifty states, [West Virginia](#) being the most recent addition (as of 03/17/2020).

President Donald Trump announced that by mutual consent, the United States will temporarily close the Northern Border with Canada to [non-essential traffic](#). He noted trade will not be affected.

President Trump [announced](#) today, 03/18/2020, he would invoke the Defense Production Act that authorizes the President to push the American industry to produce vital medical equipment. This act is a Korean War-era law typically focused on production of military equipment. Trump also stated he sent two [U.S. Navy ships](#) to assist with the COVID-19 crisis, one to New York and one to the West Coast. The USNS *Mercy* (T-AH-19) is headed to an undetermined location in the West Coast, and the USNS *Comfort* (T-AH-20) is headed to New York City. The purpose of the hospital ships is to alleviate the stress on local hospitals amid the COVID-19 pandemic. The hospital ships maintain around 1,000 rooms to assist with non-COVID-19 medical care.

President Trump [announced](#) Wednesday that his administration will suspend foreclosures and evictions of homeowners until at least the end of next month. He stated the Department of Housing and Urban Development would provide relief during the COVID-19 outbreak.

As a cautionary measure, the Guatemalan government temporarily suspended an [asylum agreement](#) between Guatemala and the United States.

Europe [surpassed](#) China in its number of confirmed COVID-19 cases and deaths. Europe's total cases reached 85,000, with China's total at 80,900. Europe reported just under 4,000 deaths, compared to about 3,200 in China.

A renowned research professor in France, Didier Raoult, reported successful results from a [new treatment](#) for Covid-19, with early tests suggesting it can stop the virus from being contagious in just six days. In an interview with [WMAL radio](#) in Washington, DC, Stanford researcher Gregory Rigano called Dr. Raoult's results "a game-changer" in the fight against COVID-19

Digital Exploitation

In a memo sent to all U.S. attorneys Monday, [Attorney General Barr](#) prioritized prosecuting cybercriminals seeking to exploit fears about the coronavirus. “[I]t is essential that the Department of Justice remain vigilant in detecting, investigating, and prosecuting wrongdoing related to the crisis,” Barr said. Barr also wants attorneys to focus on prosecuting scammers that have tried to sell fake cures for the coronavirus.

Blacklist Data

Note: No new updates. Please see the COVID-19 Daily Update (dated 03/17/2020) for the most recent data.

COVID-19 Email Spam Statistics

RiskIQ analyzed its spam box feed for the time period of 03/17/2020-03/18/2020. During this period, RiskIQ analyzed 215,490 spam emails containing either “*corona*” or “*covid*” in the subject line. There were 20,131 unique subject lines observed during the reporting period. The spam emails originated from 15,198 unique sending email domains and 22,425 unique SMTP IP Addresses. Analysts identified 1,232 emails which sent an executable file for Windows machines.

Top 25 Subjects

1. 32,393 - Anti Coronavirus Disease (COVID-19) KN95 Face Mask is Available Now!
2. 17,238 - The Mask that can prevent Coronavirus now
3. 8,683 - Coronavirus is spreading, this specialized mask can control it
4. 5,907 - PM urges citizens not to panic about Coronavirus; Modi Govt's 4-pronged strategy for good health and wellbeing...Read more in the newsletter!
5. 5,463 - PM explains simple steps to avoid spreading of Coronavirus; India calls upon SAARC nations to fight COVID-19 together...More in the newsletter!
6. 4,606 - Protection From Corona Virus With Immunity Oil
7. 4,291 - O Corona Vírus é um lembrete. Proteja sua saúde. Não adie mais.

8. 3,171 - Com a Pandemia do Coronavírus, esperar 1 ano na fila do SUS pode custar a vida
9. 3,145 - Não Dependendo do SUS Com o Coronavírus Rolando Solto.
10. 3,134 - O Corona Vírus é um lembrete. Proteja sua saúde. Não adie.
11. 3,100 - Com a Pandemia do Coronavírus, o Faustão Estava Sem Plateia Depois de 21 Anos.
12. 3,048 - TIMES TOP10: Are fewer tests behind India's low coronavirus numbers?
13. 2,386 - Coronavirus Questions And Answers: Our Brains On Coronavirus
14. 2,198 - PM Modi calls for SAARC nations to jointly fight Coronavirus; Meet the 7 women who handled PM Modi's social media...Read more in the newsletter!
15. 2,166 - COVID-19 virus can be transmitted in areas with hot and humid climates
16. 1,837 - Re: COVID-19
17. 1,549 - Coronavirus Drug Update: The Latest Info On Pharmaceutical Treatments And Vaccines.
18. 1,506 - Trump issues new coronavirus guidance, a look inside the National Quarantine Center, and more from Apple News
19. 1,490 - Today: How to Turn Coronavirus into Profit!
20. 1,483 - Météo | Coronavirus : comment faire son gel hydroalcoolique maison ?
21. 1,470 - Evite la propagación del coronavirus
22. 1,352 - COVID 19 - CLIENT COMMUNICATION
23. 1,344 - COVID-19 & Whole Foods
24. 1,308 - CORONA VIRUS: How to Protect Yourself and family
25. 1,090 - Centre de Gestion de la Moselle - Communiqué de presse relatif à la gestion du COVID-19 dans la fonction publique - 16.03.2020

Top Subjects Containing Attachments with Executable Files for Windows Machines (PE/EXEs)

1. 612 - RE: Due to outbreak of Coronavirus
2. 207 - Latest on corona-virus
3. 172 - FIRST REPORT SANGER COVID-19 03/17/2020
4. 118 - Corona Virus update
5. 48 - TNT Express Notification/ Your shipment was returned to our office!!! BECAUSE OF COVID-19 OUTBREAK
6. 37 - Coronavirus - World Health Organization
7. 24 - COVID-19 Supplier Notice
8. 5 - RE: Document Arrival - COVID-19 DETECTION
9. 4 - RE: TNT Document Arrival - COVID-19 DETECTION
10. 4 - Latest corona-virus updates

Top Countries Sending SPAM - Covid/Coronavirus Contained in Subjects (by Geolocation on SMTP IP Address)

1.	65,313 US	14.	2,264 VN
2.	22,455 UA	15.	2,250 IT
3.	20,262 IN	16.	2,159 MX
4.	11,290 CZ	17.	2,069 AR
5.	10,763 NL	18.	2,056 TR
6.	10,044 RU	19.	1,763 SC
7.	8,681 FR	20.	1,510 ID
8.	6,033 CN	21.	1,348 BE
9.	5,506 GB	22.	1,262 BD
10.	4,716 DE	23.	1,258 KR
11.	4,611 BR	24.	976 IE
12.	2,749 CA	25.	951 ZA
13.	2,357 ES		

Consumer Landscape

A [trade group](#) representing shopping-center owners urged the Trump administration on Tuesday to provide relief to retailers, restaurants and landlords as COVID-19 shuts down commerce around the U.S. In a letter to President Trump, Vice President Pence, and Treasury Secretary Mnuchin the owners said: “[t]he government should guarantee or pay for business-interruption coverage.” Likewise, the CEOs of Marriott, Hilton, Hyatt and hotel other chains met with President Trump on Tuesday to seek \$150 billion in direct aid for their workers for what they say is an unprecedented fall-off in demand because of COVID-19.

Detroit-based [automakers](#) General Motors Co, Ford Motor Co, and Fiat Chrysler Automobiles and United Auto Workers Union agreed on Tuesday to curtail production at U.S. factories and limit the number of workers on the job at one time to prevent the spread of the coronavirus among roughly 150,000 factory employees. The union and the automakers agreed to “rotating partial shutdown of facilities, extensive deep cleaning of facility and between shifts, extended periods between shifts, and extensive plans to avoid member contact.”

Likewise, [Honda North America](#) announced it will be closing four U.S.-based plants starting March 23 due to an anticipated decline in market demand. Honda said it would halt production for six days with plans to return by the end of the month. The company said they will continue to pay the 27,600 Honda associates affected by this temporary suspension. In Europe, [BMW](#) announced it has started to shutter its dealerships and plants, which will close by the end of this week. The interruption to the plants is scheduled to run until mid-April, the company said.

New York Governor [Cuomo](#) issued an executive order today mandating all businesses have no more than half of their employees leave home. The Governor requested that all employees work from home if possible. Virginia Governor [Ralph Northam](#) on Tuesday banned restaurants from having more than 10 guests; nearly 200 Richmond restaurants closed their dining rooms. He announced the ban would be enforced by law enforcement if necessary.

Facts and Figures at a Glance

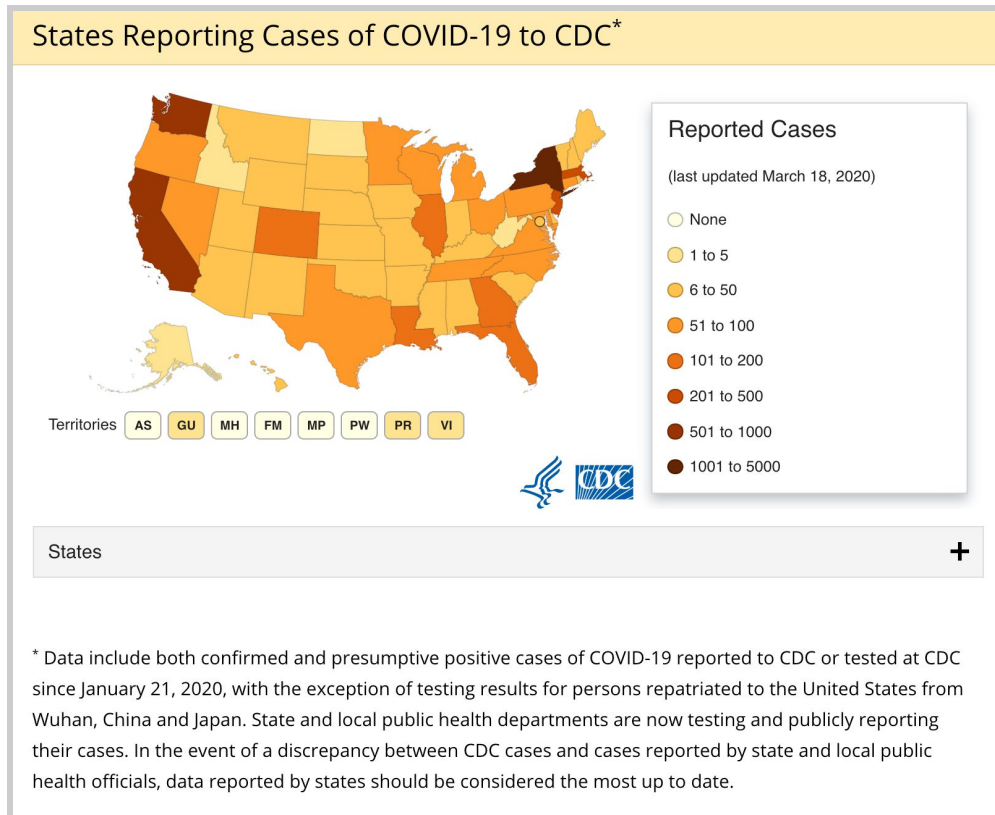
Note: As of 03/17/2020 data will be derived from Johns Hopkins University.

Global

Total Cases: 204,264
 Total Fatalities: 8,244
 Countries w/ Confirmed Cases: 157

U.S.

Total Cases: 6,519
 Total Fatalities: 115 (55 of which in Washington State)
 Jurisdictions Reporting Cases: 54 (50 states, District of Columbia, Puerto Rico, Guam, and US Virgin Islands)



Source: www.cdc.gov/coronavirus/2019-ncov/cases-in-us.html

Virus Distribution Data

Newly-Impacted Regions

United States

- West Virginia

Case Totals Near Major Cities

Bay Area, CA, US

- San Francisco County
 - Confirmed: 43
 - Deaths: 0
- San Mateo County
 - Confirmed: 64
 - Deaths: 1
- Santa Clara County
 - Confirmed: 155
 - Deaths: 5
- Contra Costa
 - Confirmed: 39
 - Deaths: 0
- Alameda County
 - Confirmed: 18
 - Deaths: 0
- Sonoma County
 - Confirmed: 6
 - Deaths: 0
- Solano County
 - Confirmed: 9
 - Deaths: 0
- Marin County
 - Confirmed: 15
 - Deaths: 0

Boston Metro Area, MA, US

- Suffolk County
 - Confirmed: 42
 - Deaths: 0

- Middlesex
 - Confirmed: 89
 - Deaths: 0
- Norfolk
 - Confirmed: 43
 - Deaths: 0
- Berkshire
 - Confirmed: 14
 - Deaths: 0
- Worcester
 - Confirmed: 8
 - Deaths: 0
- Essex
 - Confirmed: 8
 - Deaths: 0

Chicago Metro Area, IL, US

- Cook County/Chicago
 - Confirmed: 107
 - Deaths: 1
- Kane County
 - Confirmed: 3
 - Deaths: 0
- McHenry County
 - Confirmed: 2
 - Deaths: 0
- Lake County
 - Confirmed: 5
 - Deaths: 0

- Dupage County
 - Confirmed: 26
 - Deaths: 0

Greater Los Angeles, CA, US

- Los Angeles County
 - Confirmed: 144
 - Deaths: 1
- Orange County
 - Confirmed: 29
 - Deaths: 0
- Riverside County
 - Confirmed: 16
 - Deaths: 3
- Ventura County:
 - Confirmed: 10
 - Deaths: 0

NYC Metro Area, NY, US

- New York City
 - Confirmed: 923
 - Deaths: 2
- Hudson County, NJ
 - Confirmed: 24
 - Deaths: 0
- Nassau County
 - Confirmed: 131
 - Deaths: 0
- Westchester County
 - Confirmed: 380
 - Deaths: 0
- Rockland County
 - Confirmed: 22
 - Deaths: 1

- Suffolk County
 - Confirmed: 84
 - Deaths: 2
- Bergen County, NJ
 - Confirmed: 84
 - Deaths: 0

Washington D.C. Metro Area, US

- Washington D.C.
 - Confirmed: 32
 - Deaths: 0
- Loudoun County, VA
 - Confirmed: 5
 - Deaths: 0
- Fairfax County, VA
 - Confirmed: 10
 - Deaths: 0
- Charles County, MD
 - Confirmed: 1
 - Deaths: 0
- Arlington County, VA
 - Confirmed: 9
 - Deaths: 0
- Maryland, US
 - Confirmed: 63
 - Deaths: 0
- Virginia, US
 - Confirmed: 67
 - Deaths: 2

London, UK

- Confirmed:
 - UK: 1,950
 - London: 621
- Deaths:
 - UK: 60
 - London: *Data Unavailable*

Active States of Emergency

WA	02/29/2020	CO	03/10/2020	MO	03/13/2020
FL	03/01/2020	CT	03/10/2020	AL	03/13/2020
CA	03/04/2020	MA	03/10/2020	NH	03/13/2020
HI	03/04/2020	MI	03/10/2020	SC	03/13/2020
MD	03/05/2020	NM	03/11/2020	ID	03/13/2020
IN	03/06/2020	AZ	03/11/2020	NE	03/13/2020
KY	03/06/2020	AK	03/11/2020	MN	03/13/2020
UT	03/06/2020	LA	03/11/2020	GA	03/13/2020
PA	03/06/2020	AR	03/11/2020	TX	03/13/2020
NY	03/07/2020	D.C.	03/11/2020	MS	03/14/2020
OR	03/08/2020	TN	03/12/2020	VT	03/14/2020
IA	03/09/2020	VA	03/12/2020	SD	03/13/2020
IL	03/09/2020	KS	03/12/2020	ND	03/13/2020
NJ	03/09/2020	DE	03/12/2020	WY	03/13/2020
OH	03/09/2020	MT	03/12/2020	OK	03/15/2020
RI	03/09/2020	NV	03/12/2020	ME	03/15/2020
NC	03/10/2020	WI	03/12/2020	WV	03/16/2020

Governmental Guidance

CDC

- The CDC has issued risk assessments for impacted areas, where Tier 1 is the lowest risk and Tier 4 is the highest risk:
 - Tier 4 (Widespread sustained transmission and restrictions on entry to the United States):
 - China
 - Iran
 - Most European Countries
 - United Kingdom and Ireland
 - Tier 3 (Widespread sustained transmission):
 - South Korea
 - Tier 2 (Sustained community transmission):
 - Global
 - Malaysia
 - Tier 1 (Risk of limited community transmission):

WHO

World Health Organization has published information on preparing your workplace for COVID-19:

This document gives advice on:

1. Simple ways to prevent the spread of COVID-19 in your workplace
2. How to manage COVID-19 risks when organizing meetings & events
3. Things to consider when you and your employees travel
4. Getting your workplace ready in case COVID-19 arrives in your community

For further information see:

www.who.int/docs/default-source/coronaviruse/getting-workplace-ready-for-covid-19.pdf?sfvrsn=359a81e7_6

Department of State

- The State Department issued travel advisories according to the following levels:
 - Level 4 - Do not travel:
 - China
 - Iran
 - Daegu, South Korea
 - Level 3 - Reconsider travel:
 - South Korea
 - Global
 - Israel and the West Bank
 - Level 2 - Exercise increased caution
 - Level 1 - Exercise normal precautions

Prior to any travel outside the United States, the State Department recommends checking its website for COVID-19-specific travel advisories [here](#).

State & Local Governments

California

As of Tuesday, California has 450 confirmed COVID-19 cases, 58 more than reported on Monday. San Francisco Mayor London Breed placed the city on lockdown for three weeks beginning Tuesday at midnight until at least 04/07/2020. The order legally prohibits residents from leaving their homes except to meet basic needs including trips to grocery stores, pharmacies, banks, and any other business that performs an “essential” role for society.

Illinois

Today, 03/18/2020, Illinois has a total of 161 confirmed cases of COVID-19. Yesterday, Governor JB Pritzker [announced](#) the first COVID-19-related death in the state of Illinois. The victim was a 61-year-old woman from Chicago with an underlying condition who was in contact with another COVID-19 case.

Massachusetts

Today, 03/18/2020, Massachusetts has a total of 218 confirmed cases of COVID-19. Governor Baker dismissed rumors of implementing a “shelter-in-place” order for Massachusetts in a [press conference](#) yesterday. Amid the COVID-19 pandemic, Gov. Baker also announced new efforts to aid relief efforts including sending money to health boards across the state, two emergency orders for the addition of health care workers, and a declaration to aid small businesses.

New York

Today, 03/18/2020, New York has a total of 1,717 confirmed cases of COVID-19 and 16 deaths. The state of New York now stands as the state with the most confirmed cases of the novel coronavirus. Governor Andrew Cuomo [announced](#) today that he will not approve a “shelter-in place” for New York City, stating it would cause more fear amid the COVID-19 pandemic.

Washington D.C.

As of 03/18/2020, the Washington D.C.-region has a total of 162 confirmed COVID-19 cases—67 in Virginia, 63 in Maryland, and 32 in the District. D.C. Metro General Manager [announced](#) bus stop cuts will be made for the safety of the Metro workers and riders. Metro riders are encouraged to only use the Metro Buses and Metrorail if it is “essential travel” in the Washington D.C. area.

Publicly-Available Company Policies

Note: New additions are highlighted in blue.

Office Closures

- **Carta** - All offices closed until 03/31.
- **Confluent** - All offices closed, globally.
- **Fastly** - Closing all offices, including San Francisco.
- **Gap** - Corporate office in New York closed due to COVID-19 positive test in that office.
- **GoCardless** - All offices closed until further notice.
- **Grammarly** - San Francisco, New York, and Vancouver employees mandated to work from home; Kyiv employees encouraged to work from home.
- **Nike** - European HQ.
- **Masterclass** - Los Angeles & San Francisco offices working from home.
- **Moz** - Closing Seattle and Vancouver offices until 03/19.
- **OKCoin** - Mandated to work from home in San Francisco and Malta locations effectively.
- **OTICON** - Closed down Danish headquarters and asked employees to work remotely.
- **PhRMA** - Closed DC headquarters.
- **United Airlines** - Offering employees up to 6 months unpaid leave.

Remote Work/Interviews

- **23andMe** - Encouraging work from home; empowering employees to work from home based on their own situation (response to school closures, sick household members, etc.).
- **Adobe** - Asking Seattle and Bay Area employees to work from home through 03/23.
- **ADP** - Enabling work from home capabilities.
- **Airbnb** - San Francisco employees encouraged to work from home and no approval needed. Seattle office closed.
- **Amazon** - All onsite candidate interviews moving to video.
- **Autodesk** - Encouraging work from home.
- **Boeing** - Encouraging Seattle-area employees to work from home.
- **Bullhorn** - "Suspended" handshakes, a switch to Zoom meetings whenever possible, and implemented an external visitor process that sees their policy communicated to visitors 24 hours before a meeting, encouraging cancellation or online meetings where symptoms may be experienced. No office closures at this time.
- **Box** - Work from home for all locations.
- **ButcherBox** - Mandatory work from home starting 03/16.
- **Catalyst** - Work from home (New York) on a week-by-week basis.

- **Cloudera** - Suspended all non-essential travel and mandated work from home for all employees, globally. Onboarding to be done virtually. Restricted all travel to China, Bangalore, Iran, Hong Kong, Japan, Italy, and South Korea. Restricting visitor access in all our offices to business critical meetings only. Suspending meal services in all offices globally. Interviews with candidates via videoconferencing.
- **Coinbase** - Optional work from home starting 03/09, also providing \$250 stipend per employee for video conferencing equipment.
- **Confluent** - Requiring work from home globally; all interviews transitioning to remote.
- **Dialpad** - All employees are required to work from home.
- **DNAnexus** - All employees strongly encouraged to work from home from both San Francisco and Mountain View offices.
- **Docusign** - Requiring remote work.
- **Dolby** - Option to work remote.
- **Drift** - Work from home required across all offices (Boston, San Francisco, Tampa and Seattle). Reassessing every Friday.
- **eCarta** - Work from home, Seattle and San Francisco offices shut down.
- **Elastic** - Mandatory work from home.
- **Eli Lilly and Co** - Encouraging all U.S. employees to work from home if possible.
- **Ellucian** - Candidate interview travel has been suspended for 45 days; opting to utilize video interviewing instead. All candidates have a choice to either come into office or opt for a video interview.
- **Expedia** - Encouraging Seattle employees to work from home.
- **Facebook** - Moving to all video interviews to restrict visits to physical offices, asked all Bay Area employees to work from home through March.
- **Federal Reserve Bank of Chicago** - Non-critical employees asked to work remotely for 2 weeks (starting 03/12) then reevaluate.
- **Glassdoor** - All employees asked to work from home until further notice (same parent company as Indeed).
- **Grammarly** - San Francisco, New York, and Vancouver employees mandated to work from home; Kyiv employees encouraged to work from home; conducting all candidate interviews by video.
- **Genie** - Work from home, Redmond Office.
- **Google** - Asking all North American employees to work from home until 04/10.
- **Handshake** - Encouraging all employees to work from home 03/09 to 03/20 (reviewed weekly to determine if they extend).
- **HelloBetter.de** - Instituted work from home for all global employees.
- **Hometree.co.uk** - Running work from home mandatory policy until further government advice for all employees.
- **Houzz** - Work from home in Bay Area, but offices will still be open for those who want to work in office. Will be monitored on a week-to-week basis.
- **Indeed** - All employees requested to work from home (same parent company as Glassdoor) -- possibly for the whole year.

- **Intel** - Recommending employees work from home.
- **Internxt** - All employees are encouraged to work from home.
- **JP Morgan** - Managers requested that about 10% of staff across its consumer bank work remotely as part of the plan's resiliency testing.
- **LA Times** - Restricting employee travel and encouraging work from home.
- **LinkedIn** - Bay Area employees asked to work from home through March.
- **Lyft** - San Francisco and Seattle employees encouraged to work from home.
- **OKCoin** - Allowing employees to work from home. Preparing for mandatory work from home should situations change near office locations.
- **Okta** - Directed Bellevue, San Francisco, San Jose, London, Paris, Amsterdam employees to work from home.
- **PolicyGenius** - Optional work from home.
- **Pure Storage** - Work from home, Seattle / Bellevue, Mountain View.
- **Mattermost** - Majority of staff is remote, recommend work from home for San Francisco.
- **Microsoft** - Allowing San Francisco/Seattle employees to work from home through March 9th.
 - Official Microsoft guidance.
 - LinkedIn tells Bay Area employees to work from home through March, if possible, and is also asking employees to postpone all non-essential business travel and will not participate in external events in March and April.
- **Mozilla** - Strongly recommending work from home for all employees until 03/27. Non-essential travel cancelled until further notice.
- **Nextdoor** - All global employees strongly encouraged to work from home; all interviews are to be conducted remotely.
- **Nordstrom** - Encouraging employees to work from home if they can.
- **PolicyGenius** - Optional work from home.
- **Reflektive** - All domestic and international travel on hold, no visitors in offices, supporting work from home, all interviews done remotely. Reassessing every weekend.
- **REI** - Seattle, work from home.
- **Salesforce** - Encouraging Seattle Salesforce/Tableau employees to work from home through March. Strongly encouraging all employees across California and New York to work remotely for the month of March.
- **Securities and Exchange Commission (SEC)** - Asked DC employees to telework.
- **Sisense** - Highly encouraged work from home for all locations.
- **Spotify** - New York employees asked to work remotely through March.
- **Square** - Suspended visitors and certain teams being encouraged to work from home in Seattle, San Francisco, Dublin, Ireland, and London.
- **StayingHomeClub** - A running list of tech companies work from home/travel/conference plans.
- **Stride** - Work from home is strongly encouraged in San Francisco (only office location), but the office will still be open for those who want to work in office. Will be monitored on a daily/weekly basis.

- **Stripe** - Encouraging/requiring work from home, suspending visitors, video interviews.
- **SurveyMonkey** - Allowing employees flexibility to work from home through 03/20.
- **Textio** - Encouraging remote work and suspending travel.
- **Thrive Digital** - Team members recommended to work from home until 03/31; however, the office remains open (for now). In-person interviews have been rescheduled to video calls. Non-team member office visitors are restricted.
- **TMobile** - Work from home, Seattle/Bellevue.
- **Twitter** - Encouraging all employees who are able to work from home, video interviews.
- **VSCO** - Offering optional work from home, no social visitors, video interviews.
- **WalkMe** - All employees have been notified that they can work from home if they feel more secure. Currently, the offices are open. A full day of remote work is implied in the Tel Aviv office to test the systems on Sunday (work day).
- **Washington Post** - Asking employees to work from home.
- **WSurveyMonkey** - Allowing employees flexibility to work from home through 03/20.
- **XWiki** - Fully remote until further notice.

Travel Restrictions

- **23andMe** - Banned travel to affected areas as listed by CDC and instructed employees to only attend critical conferences.
- **ADP** - All non-essential business travel is limited.
- **Amazon** - All non-essential travel (including all onsite candidate interviews, now going to video).
- **Aptiv** - All travel (currently through end of March).
- **Atlassian** - Restricting to only high-business impact travel.
- **Audley Travel** - All inter-office travel; only essential familiarization trips to non-categorised areas.
- **Automattic** - Pausing all business travel and discouraging personal travel.
- **Bottomline Technologies** - All non-essential travel (including all onsite candidate interviews now going to video).
- **Bullhorn** - Maintaining a list of regions where travel is banned and restrictions on all cross-border travel without authorization.
- **Cargill** - Suspending all non-essential business travel.
- **Cloudera** - Suspended all non-essential travel and mandated work from home for all employees, globally.
- **Comparably** - Suspended all non-essential travel and mandated work from home for all employees.
- **Confluent** - Suspending all non-essential travel. Implementing "no questions asked" opt-out for essential travel.
- **CVSHealth/Aetna** - Suspending travel until May.

- **DNAnexus** - Restricted all travel unless reviewed and approved by C-Level.
- **Dolby** - All company travel restricted.
- **Drift** - All company travel restricted.
- **Ellucian** - Suspending all internal employee travel for 45 days; employees are able to opt-out of any and all customer travel.
- **Ford** - Restricting all global travel until 03/27.
- **GitHub** - All non-essential travel.
- **Gitlab** - Restricted all non-essential, cross-border travel.
- **GoCardless** - All business travel until the end of April.
- **Google** - All international travel.
- **Grammarly** - Pausing all business travel and discouraging personal travel.
- **Handshake** - Travel only for key business priorities.
- **Harvard University** - Restricting travel through 04/20.
- **Havas** - Per an internal memo issued by CEO Yannick Bolloré, business travel to areas including South East Asia, Milan and Venice is suspended. Employees coming back from a business trip in those areas have to work from home for 14 days.
- **HelloBetter.de** - Banned international travel.
- **IBM** - Suspending travel for internal meetings, external events with 1,000+ attendees, non-critical international travel.
- **inFeedo** - Pausing all non-essential travel.
- **Intel** - All Travel and Conferences attendance or meetings with people you can't track where they came from.
- **JP Morgan Chase** - Restricting non-essential global and domestic travel.
- **LA Times** - Restricting employee travel and encouraging work from home.
- **L'Oreal** - Suspending business travel through March.
- **Mattermost** - Strongly discouraging international business travel and non-essential local travel.
- **Nestle** - Restricting international business travel until mid-March.
- **Nike** - Partial restrictions.
- **OKCoin** - Suspended all business travel until further notice; discouraging personal travel.
- **Okta** - Restricting non-essential travel.
- **Paycor** - All non-essential travel (including candidate travel).
- **Shoppable** - All non-essential travel.
- **Salesforce** - All non-essential travel.
- **Sisense** - Suspended all non-essential travel, supporting employee requests for travel avoidance.
- **Slack** - Strongly encouraging all employees to work from home through the end of March. Tokyo & Osaka offices closed.
- **Square** - Pausing all business travel and discouraging personal travel.
- **Stanford University** - Moves all classes online for the remainder of winter quarter.

- **Stride** - Pausing all business travel; self-quarantine (14 days) after personal international/domestic travel case-by-case depending on where they are coming from.
- **Stripe** - Paused global business travel.
- **Tenable** - Onboarding of new members is now online only.
- **Textio** - Encouraging remote work and suspending travel.
- **Thrive Digital** - All business and conference travel is temporarily restricted. Team member travel is not restricted, but those returning from breakout zones will be required to work from home for a period of 14 days.
- **Twitter** - All non-essential travel (including candidate travel).
- **Unilever** - Restricted to “business-critical” travel.
- **Vertiv** - International and domestic trips restricted.
- **VSCO** - Paused international travel and non-essential domestic travel.
- **WalkMe** - All non-essential business travel is limited, including candidates and international travel.
- **World Bank/IMF** - Moving spring meetings to virtual.

School Closures Near Major Cities

Note: EoS stands for End of Semester

Bay Area School Districts and Colleges

Note: Due to large number of school closures see [here](#) for additional closings.

- 03/12- 04/03 All 113 San Francisco Public Schools (SFUSD)**
- 03/11-30: Academy of Art University
- 03/11-12: Archdiocese of San Francisco Schools
- 03/16-04/12: Cal State East Bay, Hayward
- 03/11-12: City College of San Francisco
- 03/07-16: Elk Grove Unified School District, Sacramento County
- 03/08-10: ICA Cristo Rey, San Francisco
- 03/09-12: Juniper Serra, San Mateo
- 03/11-14 Laney College
- 03/05-10: Lowell High School
- 03/12-04/05: Mission College, Santa Clara
- 03/09-12: Notre Dame, Belmont
- 03/16-TBD: Oakland Holy Names University
- 03/11-14: Peralta Community College District
- 03/10-27: San Jose State University
- 03/10-16: San Francisco State University
- 03/10-04/13: Santa Clara University
- 03/08-10: School of the Epiphany, San Francisco
- 03/09-29: University of California Berkeley

Boston Metro Area School Districts and Colleges

Note: Due to large number of school closures see [here](#) for additional closings.

- 03/16-04/07: All public and private primary and secondary schools closed**
- 03/12-13: Amherst College
- 03/13: Babson College (classes fully online)
- 03/12: Berklee College of Music (classes fully online)
- 03/12-EoS: Boston College (classes suspended)
- 03/11-13: Boston University (classes fully online)
- 03/12-16: Bunker Hill Community College
- 03/12-20: Brandeis (Waltham)

03/16-20: Bridgewater State University
03/17-27: Bryant University
03/11-22: Curry College
03/13-20: Emerson, Boston
03/11-17: Emmanuel College
03/28-TBD: Harvard University
03/14: Holy Cross
03/12-13: Lincoln School (Brookline)
03/16-22: Massachusetts College of Art and Design
03/12-22: Merrimack College
03/12-TBD: MGH Institute of Health Professions
03/16-20: MIT University, Cambridge
03/12-EoS: Northeastern University, Boston (classes fully online)
03/14-20: Smith Colleges
03/14-20: Stonehill (Easton)
03/18-EoS: Suffolk, Boston
03/16-25: Tufts, Somerville
03/11-TBD: University of Massachusetts
03/16-27: Westfield State
03/13-29: Worcester State

Chicago Metro Area School Districts and Colleges

Note: Due to large number of school closures see [here](#) for additional closings.

03/17-27: Illinois Governor J.B. Pritzker ordered all K-12 schools closed
03/16-TBD: DePaul University
03/13-TBD: Illinois State University
03/16-TBD: Loyola University
03/16-30: Northeastern Illinois University
03/13-TBD: Northwestern University
03/13-TBD: University of Illinois
03/30-06/13: University of Chicago

D.C. Metro Area School Districts and Colleges

Note: Due to large number of school closures see [here](#) for additional closings.

03/16-27: Virginia Governor Ralph Northam ordered all K-12 schools closed
03/16-27: Maryland Governor Larry Hogan ordered all K-12 schools closed
03/16-31: District of Columbia Public Schools (Distance Learning)
03/10-04/03: American University

03/16-TBD: George Washington University
03/12: Golden Pond School
03/16: The New School of Northern Virginia
03/11-13: New York University, Washington D.C.
03/16-17: Northern Virginia Community College

Greater Los Angeles School Districts and Colleges

Note: Due to large number of school closures see [here](#) for additional closings.

03/16-04/06 Bonita Schools (BUSD)
03/16-03/30 Conejo Valley Schools (CVUSD)
03/26-26: California State University, Fullerton
03/12-18: California State University, Long Beach
03/30-04/03: Cal State University, Channel Islands
03/11-04/06: Caltech
03/16-04/17: Long Beach (LBUSD)
03/12-18: Los Angeles Community College District
03/16-30: Los Angeles Public Schools (LAUSD)
03/16-31: Loyola Marymount University
03/14-04/03: Mount Saint Mary's University
03/11-13: New York University, Los Angeles
03/13-TBD: Pepperdine University
03/16-TBD San Diego Schools (SDUSD)
03/16-30: Simi Valley Schools (SVUSD)
03/11-TBD: UCLA
03/11-TBD: UC Irvine
03/11-04/03: UC Riverside
03/16-04/10 Ventura Schools (VUSD)

NYC Metro Area School Districts and Colleges

Note: Due to large number of school closures see [here](#) for additional closings.

Note: All public schools are closed in NYC.

03/09-13: Barnard College, NYC
03/12-13: Bedford Schools, Westchester
03/11-17: Bergen Center for Child Development
03/09-13: The Brearley School, NYC
03/13-TBD: Brooklyn College Academy
03/16: Cranford School District, NJ
03/11-21: East Ramapo School District

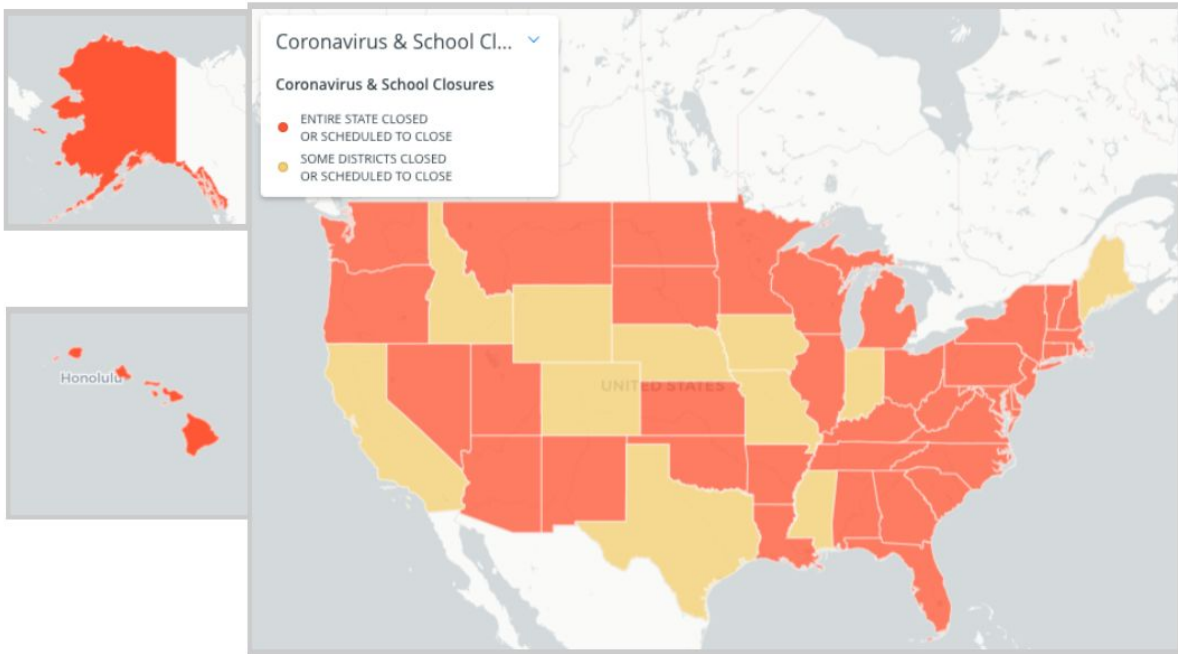
03/09-29: Fordham University, NYC
03/12-13: Greenport Union Free School District, Long Island
03/14-04/04: Harlem School of the Arts
03/10-13: Hofstra University, Long Island
03/10-31: Horace Mann School, NYC
03/09-23: Iona College, New York
03/16-29: Juilliard School, NYC
03/11-EoS: Keio Academy of New York (classes fully online)
03/12-13: Nassau County Community College, Long Island
03/11-22: New York University, NYC
03/12-03/20: Plainview School District, Long Island
03/12-TBD: Princeton University, NYC
03/13-TBD: Richard H. Hungerford School at New Dorp High School
03/11-27: Rowan University, NJ
03/12-04/03: Rutgers University, NJ
03/11-29: Sacred Heart University
03/12-22: Sag Harbor School District, Long Island
03/09-18: Scarsdale School District
03/11-20: Skidmore College, NY
03/12-27: St. John's University, Queens
03/12-30: Syracuse University, NY
03/12-25: Tuckahoe Union Free School District, NY
03/12-16: Trenton New Jersey School District
03/09-17: Westchester Day School
03/12-03/13: West Islip, Long Island
03/09-16: Yeshiva University, NYC

London, UK School Districts and Colleges

Note: To check for local school closures in the UK see [here](#).

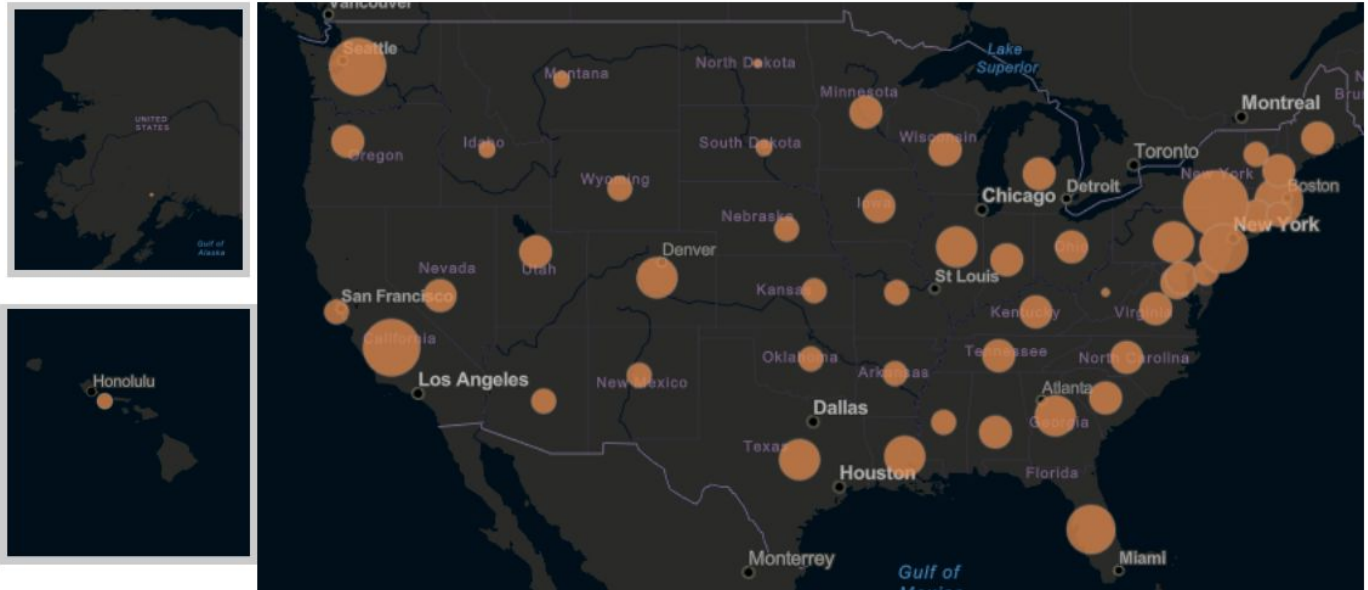
All schools in England and Northern Ireland are closed from 03/20 until further notice.

Map of Active School Closures - U.S.



Source: www.edweek.org/ew/section/multimedia/map-coronavirus-and-school-closures.html

Map of Active Reported Cases - U.S.



Source: <https://www.arcgis.com/apps/opsdashboard/index.html#/bda7594740fd40299423467b48e9ecf6>

Map of Active Reported Cases - Global



Source: <https://www.arcgis.com/apps/opstdashboard/index.html#/bda7594740fd40299423467b48e9ecf6>

End Report