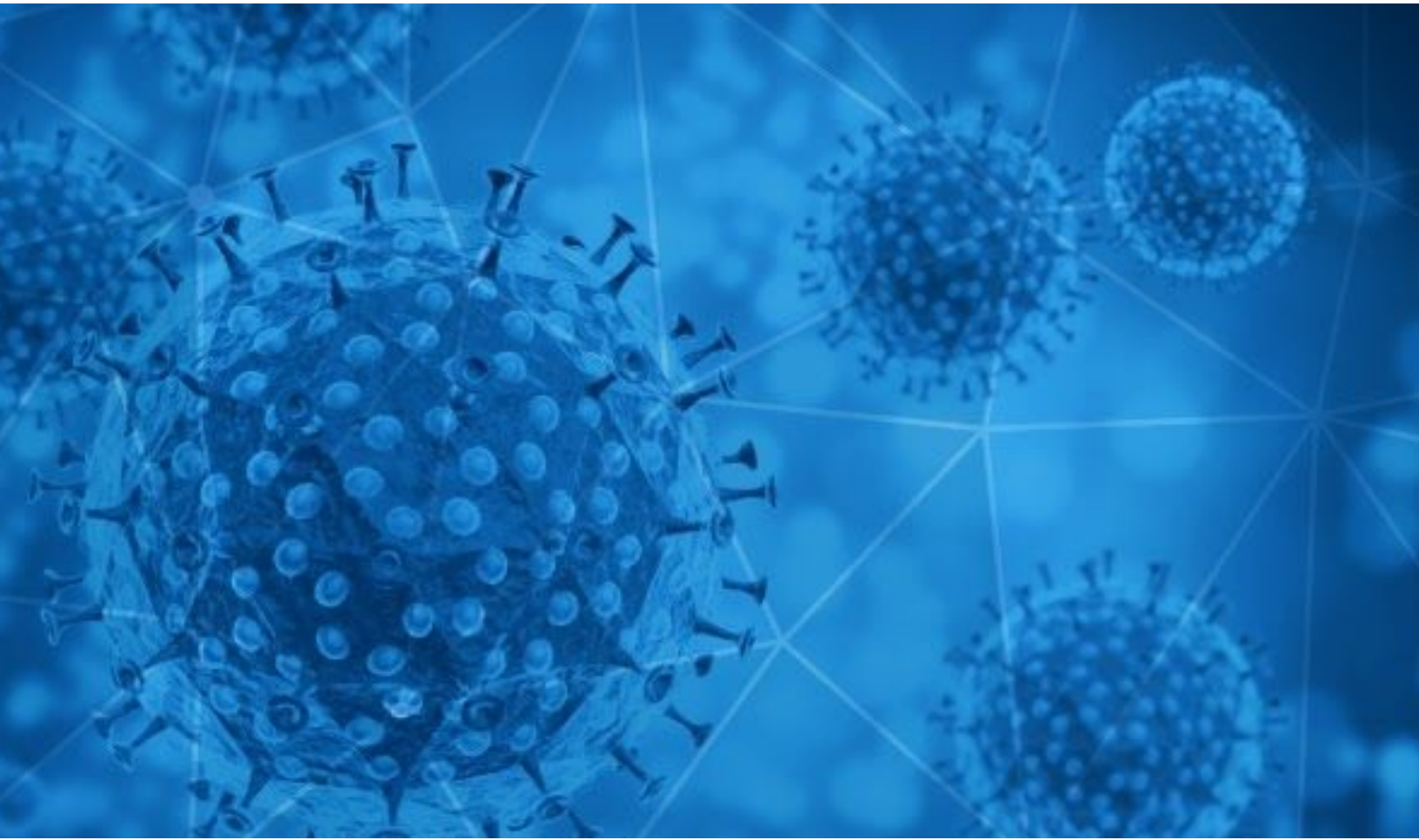




**RiskIQ i3:**

# COVID-19 Daily Update

03/19/2020



# Table of Contents

<b>Methodology</b>	<b>3</b>
<b>Disclaimer</b>	<b>3</b>
<b>Notable Events: Previous 24 Hours</b>	<b>4</b>
<b>Digital Exploitation</b>	<b>6</b>
Blacklist Data	7
<b>COVID-19 Email Spam Statistics</b>	<b>7</b>
<b>Consumer Landscape</b>	<b>11</b>
<b>Facts and Figures at a Glance</b>	<b>13</b>
Global	13
U.S.	13
Highest COVID-19 Case Count - U.S.	13
<b>Virus Distribution Data</b>	<b>14</b>
Newly-Impacted Regions	14
Case Totals Near Major Cities	14
<b>Active States of Emergency</b>	<b>16</b>
<b>Governmental Guidance</b>	<b>17</b>
CDC	17
WHO	17
Department of State	18
State & Local Governments	18
<b>Publicly-Available Company Policies</b>	<b>20</b>
Office Closures	20
Remote Work/Interviews	20
Travel Restrictions	23
<b>School Closures Near Major Cities</b>	<b>26</b>
<b>Map of Active School Closures - U.S.</b>	<b>30</b>
<b>Map of Active Reported Cases - U.S.</b>	<b>31</b>
<b>Map of Active Reported Cases - Global</b>	<b>32</b>

## Methodology

*The information provided in this report is limited to open source and publicly available data discovered through standard, commonly known browsing techniques and keyword searches. To provide efficient results, RiskIQ may use websites that require payment in exchange for aggregation of data that is otherwise publicly available without payment and could be obtained by anyone accessing the correct sites or engaging the correct third parties to obtain the information. Information presented in this report is cross-checked against multiple sources for full verification; however, some assessments and conclusions are based on incomplete information and represent the RiskIQ analyst's judgment based on patterns and data available.*

## Disclaimer

*The information provided in this report is "as-is" and Customer acknowledges and agrees that RiskIQ makes no representation or warranty, express or implied, as to the accuracy or completeness of the information. Customer agrees that RiskIQ shall not have any liability resulting from Customer's use of this information.*

## Notable Events: Previous 24 Hours

The U.S. State Department is expected to issue a Level 4 [travel advisory](#) for all international travel. The advisory would instruct all Americans abroad to either return to the U.S. or prepare to shelter-in-place.

The American Red Cross issued an urgent call for [blood donations](#) as it deals with a severe blood shortage due to canceled community blood drives.

As of 03/18/2020, thirty-seven states have announced statewide [court closures](#); ten more states have left court closures to local governments.

Two members of the U.S. House of Representatives [tested positive](#) for COVID-19 on 03/18/2020, marking the first confirmed cases in Congress. Reps. Mario Diaz-Balart, R-Fla., and Ben McAdams, D-Utah, both reported being ill with COVID-19 and are under self-quarantine in response. Reps. Steve Scalise, R-La., Kendra Horn, D-Okla., and Drew Ferguson, R-Ga., will self-quarantine due to their recent contact with the affected Representatives. Elsewhere in the government, U.S. Federal Aviation Administration chief Steve Dickson announced he is in self-quarantine for seven days after meeting with one of the affected Representatives.

Some businesses are altering their operations to help respond to the growing crisis. [Multiple distilleries](#) across the U.S. started producing hand sanitizer to distribute to in-need organizations. The Distilled Spirits Council of the United States trade group contacted federal regulators and the Trump administration's coronavirus task force to clear red tape to help produce more hand sanitizer.

Nursing homes continue to be high-risk areas, as DuPage County, Illinois reported forty-six confirmed cases on COVID-19 in a single nursing home. The affected nursing home, [Chateau Nursing and Rehabilitation Center](#), reported the virus distribution as being thirty-three patients and thirteen staff with six patients currently hospitalized.

The U.S. government [warns](#) the COVID-19 pandemic will possibly last eighteen months or longer and could include multiple waves. Additionally, government officials warn private and public sector shortages are possible. For private sector shortages, this could include diagnostics, medical supplies (including PPE [personal protective equipment] and pharmaceuticals), and staffing in some locations. For the public sector, the government warns state and local governments, critical infrastructure, and communications channels will be stressed and potentially less reliable.

The Department of Housing and Urban Development (HUD) [suspended foreclosures and evictions](#) for all mortgages insured by the Federal Housing Administration (FHA) through the end of April. Approximately 8.1 million mortgages will fall under these protections.

Treasury Secretary Steve Mnuchin said the White House is working to [issue checks](#) to most American households within three weeks. Mnuchin said the target is \$1,000 per adult and \$500 per child under the current proposal. This proposal must still be approved by Congress before any payment amounts, payment dates, and limitations/restrictions can be confirmed.

The New York State Assembly passed legislation that will grant [sick leave](#) to all New Yorkers in both the private and public sectors; the exact amount of leave and how the benefits will be paid out depend on the size of the company.

New York Governor Andrew Cuomo issued a [mandate](#) that 75% of the non-essential workforce must work from home.

Australian Prime Minister Scott Morrison announced a [travel ban](#) on all non-residents and non-citizens coming to Australia and is set to begin at 9:00 P.M. on Friday, 03/20/2020. There is no set timetable for the ban as officials warn the ban could last as long as medical advisors deem necessary.

New Zealand announced significant [travel restrictions](#) set to begin 11:59 PM on 03/19/2020. Inbound international travel will have tight restrictions for most travelers, except for “New Zealand citizens, permanent residents, residents with valid travel conditions and their immediate family (partner or spouse, legal guardian and dependent children under the age of 24) can still come to New Zealand. Australian citizens and permanent residents who normally live in New Zealand can also return to New Zealand.” Returning residents and citizens must self-isolate for fourteen days upon return.

Transport for London (TfL) announced a [partial shutdown](#) of the Tube network in the city; up to forty stations are set to close in response to the announcement. TfL also announced there will be no night Tube services and bus services will also be reduced.

UK police warned citizens that burglars are [pretending](#) to be from the National Health Service (NHS); the thieves claim to be administering COVID-19 tests to gain access to homes. Authorities asked all citizens to refuse entry to any individual claiming to be administering tests and to call 999 [emergency services].

## Digital Exploitation

The DDoS attack on the US Department of Health and Human Services (HHS) website on Sunday is now believed to be part of a [coordinated campaign](#). The attack coincided with a disinformation campaign carried out via SMS, email and social media that reportedly claimed a national quarantine of the US was imminent. This sort of coordination is something commercial cyberattacks would be unlikely to bother with, hence the claim that a nation-state was behind it.

Russian media have deployed a “[significant disinformation campaign](#)” against the West to worsen the impact of the coronavirus, generate panic and sow distrust, according to a European Union document seen by Reuters. The Kremlin denied the allegations on Wednesday. The EU document said the Russian campaign, pushing fake news online in English, Spanish, Italian, German and French, uses contradictory, confusing and malicious reports to make it harder for the EU to communicate its response to the pandemic.

[Hackers](#) are exploiting the COVID-19 outbreak to spread their own infections, including registering malicious Coronavirus-related domains and selling discounted off-the-shelf malware in the dark web. Likewise, thousands of COVID-19 scam and malware sites are being created on a daily basis. [RiskIQ](#) saw more than 13,500 suspicious domains on Sunday, March 15; more than 35,000 domains the next day; and more than 17,000 domains the day after that. Most of the sites were found to be a scam peddling fake cures, or private sites, most likely used for malware distribution only to users with a specific referral header.

The [TrickBot and Emotet Trojans](#) have started to add text from COVID-19 news stories to attempt to bypass security software using artificial intelligence and machine learning to detect malware. Before malware is distributed in phishing campaigns or other attacks, developers commonly use a program called a 'crypter' to obfuscate or encrypt the malicious code. This is done in the hopes that it makes the malware appear to be harmless and thus undetectable to antivirus software. (Please see RiskIQ’s i3 Intelligence Brief, dated 03/03/2020, and entitled “[Ransomware Attacks the Next Consequence of the Coronavirus Outbreak](#)” for additional information about the use of Emotet Trojans by cybercriminals to exploit the COVID-19 crisis.)

Cybercriminals and scammers continue to take advantage of the increased communication about COVID-19 by [lacing mobile applications](#) with a trojan. The application is titled “corona live 1.1.” Upon first launch, the app informs the user it does not require special access privileges, but subsequently proceeds to request access to photos, media, files, device location, as well as permission to take pictures and record video. The corona live 1.1 app is a SpyMax sample, a trojanized version of the legitimate “corona live” application which provides an interface to the data found on the Johns Hopkins coronavirus tracker including infection rates and number of

deaths over time and per country. SpyMax allows the cyber attacker to access a variety of sensitive data on the phone, and provides a shell terminal and the ability to remotely activate the microphone and cameras.

Some [ransomware operators](#) claim they will no longer target health and medical organizations during the COVID-19 pandemic.

The [Federal Deposit Insurance Corporation](#) (FDIC) issued a statement Wednesday warning about an increase in scams trying to sow distrust in the U.S. financial system while the nation is dealing with the fallout of the coronavirus pandemic. The FDIC says it has seen an uptick in calls, text messages, letters and emails from scammers pretending to be FDIC employees, using names of people who actually work at the FDIC. The scammers falsely claim that banks are limiting access to deposits or that there are security issues with bank deposits.

The [Federal Trade Commission](#) (FTC) warned consumers on Wednesday about possible scams related to the US government plans to send money by check or direct deposit to everyone. It warned that the government will not ask for any fees or charges related to the payout and it will not call to ask for social security numbers, bank accounts, or credit card numbers. The FTC stated that the reports of checks aren't yet a reality and anyone claiming they can get you the money now is a scammer.

On Wednesday, [Twitter](#) updated its safety policy to prohibit tweets that “could place people at a higher risk of transmitting COVID-19.” The new policy bans tweets denying expert guidance on the virus, encouraging “fake or ineffective treatments, preventions and diagnostic techniques” as well as tweets that mislead users by pretending to be from health authorities or experts.

## Blacklist Data

*Note: No new updates. Please see the COVID-19 Daily Update (dated 03/17/2020) for the most recent data.*

## COVID-19 Email Spam Statistics

RiskIQ analyzed its spam box feed for the time period of 03/18/2020-03/19/2020. During this period, RiskIQ analyzed 268,382 spam emails containing either “\*corona\*” or “\*covid\*” in the subject line. There were 20,271 unique subject lines observed during the reporting period. The spam emails originated from 14,279 unique sending email domains and 20,962 unique SMTP IP Addresses. Analysts identified 1,099 emails which sent an executable file for Windows machines.

## Top 25 Subjects



1. 57,077 - Anti Coronavirus Disease (COVID-19) KN95 Face Mask is Available Now!
2. 21,650 - The Mask that can prevent Coronavirus now
3. 16,495 - Coronavirus: Safety Tips for You Basic protective measures against the new coronavirus
4. 10,778 - Coronavirus is spreading, this specialized mask can control it
5. 7,979 - The 3 plants you need to throw in your shopping cart to fight coronavirus
6. 6,649 - Join us in fight against Coronavirus- Covid-19
7. 6,388 - PM Modi calls for SAARC nations to jointly fight Coronavirus; Meet the 7 women who handled PM Modi's social media...Read more in the newsletter!
8. 4,645 - Protection From Corona Virus With Immunity Oil
9. 4,418 - Pesan dari Co-CEO Gojek: Bagaimana Kami Mengupayakan Semuanya Aman di Tengah Tantangan COVID-19
10. 3,891 - Get Your Household Ready for Coronavirus disease (COVID-19)
11. 3,405 - Com a Pandemia do Novo Coronavírus, Até os Estúdios Globo Fecharam.
12. 3,215 - Até os Estúdios Globo Fecharam... Como Está o Seu Cuidado Para o Coronavírus?
13. 3,109 - Coronavirus: Cuide da sua saúde e evite aglomerações
14. 2,884 - Coronavirus Drug Update: The Latest Info On Pharmaceutical Treatments And Vaccines.
15. 2,676 - COVID-19 virus can be transmitted in areas with hot and humid climates
16. 2,431 - Com a Pandemia do Coronavírus, esperar 1 ano na fila do SUS pode custar a vida
17. 2,380 - Com a Pandemia do Coronavírus, o Faustão Estava Sem Plateia Depois de 21 Anos.
18. 2,341 - Não Dependenda do SUS Com o Coronavírus Rolando Solto.
19. 2,081 - COVID-19 Update
20. 1,911 - RE: RE: PO (COVID-19)
21. 1,824 - PM urges citizens not to panic about Coronavirus; Modi Govt's 4-pronged strategy for good health and wellbeing...Read more in the newsletter!



22. 1,665 - MYTELEMEDIC- NOW PROVIDES UNINSURED WITH #Telemedicine TO PREVENT SPREAD OF #CORONAVIRUS
23. 1,644 - Coronavirus disease (COVID-19) advice for the public
24. 1,569 - Kevin Durant and 3 Other Nets Players Test positive 4 CORONA +Tom Brady joining Tampa Bay Buccaneers
25. 1,014 - Diabetes Breakthrough Killing Coronavirus (Do This)

## Top Subjects Containing Attachments with Executable Files for Windows Machines (PE/EXEs)

1. 875 - RE: Due to outbreak ofCoronavirus
2. 181 - Covid19"" Latest Tips to stay Immune to Virus !!
3. 22 - Corona Virus update
4. 16 - RE: Solución COVID-19
5. 2 - COVID-19 Supplier Notice
6. 1 - fight against the epidemic Coronavirus with face mask and hand wash.
7. 1 - TNT Express Notification/ Your shipment was returned to our office!!! BECAUSE OF COVID-19 OUTBREAK
8. 1 - Bank Account Information (covid-19)

## Top Countries Sending SPAM - Covid/Coronavirus Contained in Subjects (by Geolocation on SMTP IP Address)

- |               |              |
|---------------|--------------|
| 1. 131,777 US | 14. 2,270 VN |
| 2. 18,560 IN  | 15. 2,129 CA |
| 3. 13,587 DE  | 16. 1,947 ZA |
| 4. 10,528 FR  | 17. 1,933 AR |
| 5. 9,789 CZ   | 18. 1,575 BD |
| 6. 9,351 RU   | 19. 1,570 ID |
| 7. 7,359 CN   | 20. 1,457 KR |
| 8. 5,173 GB   | 21. 1,432 UA |
| 9. 5,147 NL   | 22. 1,188 BE |
| 10. 4,848 BR  | 23. 986 AU   |
| 11. 3,861 SC  | 24. 984 TR   |
| 12. 2,912 IT  | 25. 887 CL   |
| 13. 2,372 ES  |              |

## Consumer Landscape

[Amazon](#) announced the temporary closing of a small New York warehouse after one of its associates tested positive for the coronavirus. The company said it has sent associates home from the delivery station with full pay while it sanitizes the facility, its first in the United States known to have a case of the virus. The news is an indication that Amazon may close additional warehouses should more cases of the virus arise among staff.

[Truckers](#) are trying to navigate growing challenges on highways and at loading docks as they seek to keep supply chains running to meet surging coronavirus-driven demand for consumer staples and medical equipment.

[Uber](#) Chief executive Dara Khosrowshahi said today the company is "looking to deliver" coronavirus tests and is working with health officials in order to do so. There's no word on where the tests might be delivered first, or whether they will be delivered to homes, hospitals, testing sites, or other locations.

[U.S. airline carriers](#) dramatically pared their schedules. American Airlines will fly just three long-haul routes in April. Delta Air Lines will ground more than two-thirds of the carrier for several months, and United Airlines has lopped off 85% of international capacity. Likewise, Australia's top airline [Qantas](#) will halt all international flights due to the coronavirus pandemic.

[Target](#) CEO Brian Cornell announced yesterday the company was working to keep stores open for customers with reduced store hours. All stores will now close at 9:00 p.m. to allow staff to replenish and clean the stores. Target is also reserving the first hour of shopping each Wednesday to support vulnerable guests including the elderly and those with underlying health concerns. Cornell also said the company is fast-tracking the flow of products that are in highest demand, including food, medicine and other essentials.

[Charles Schwab](#) CEO Walt Bettinger announced the company was now able to expand its remote access approach and encouraged employees—with the exception of critical roles in network operations, cyber security, trading and other areas—to work from home starting today. The company also announced every employee below the officer level would receive a \$1,000 spot bonus to show the company's appreciation for their work.

[Maryland Governor Larry Hogan](#) on Thursday announced the state's malls and entertainment venues would be ordered closed later in the day to stem the spread of coronavirus.

In Kentucky, the COVID-19 pandemic led one [gas station](#) to let drivers fuel up for 99 cents a gallon. The station temporarily sold out of gas Thursday morning after the store announced on Facebook Monday night that it would be dropping its price.

Grocery store workers in [Minnesota](#) will now have access to free child care after the state classified them as emergency workers during the coronavirus outbreak. An executive order signed by Minnesota Governor Tim Walz on Sunday stated that emergency workers deemed “critical” to the state’s response to the outbreak would be provided child care.

Amid multiple [automakers](#) announcing plans to curtail production at U.S. factories and limit the number of workers on the job, [Tesla](#) CEO Elon Musk, stated the company was keeping its Fremont, California car plant running during “shelter in place” orders initiated across the region. Tesla officials told employees they could stay home if they wanted, but production, service and deliveries would be ongoing. Musk said he would personally still be at work.

[Gun sellers](#) across the US are reporting major spikes in firearm and ammunition purchases as COVID-19 spreads across the country. Pictures of long lines outside gun stores in California, Oklahoma and elsewhere have gone viral on social media. Likewise, the ammunition website Ammo.com said it has recorded an unprecedented surge in ammunition sales over the last three weeks.

All 30 [Major League Baseball](#) teams on Tuesday pledged \$30 million total to help cover the lost wages of ballpark employees who have been affected by the postponement of the big league season due to the coronavirus crisis.

## Facts and Figures at a Glance

**Note: As of 03/17/2020 data will be derived from Johns Hopkins University.**

### Global

Total Cases: 222,642  
Total Fatalities: 9,115  
Countries w/ Confirmed Cases: 159

### U.S.

Total Cases: 9,415  
Total Fatalities: 150 (68 of which in Washington State)  
Jurisdictions Reporting Cases: 54 (50 states, District of Columbia, Puerto Rico, Guam, and US Virgin Islands)

*Note: According to the White House press briefing on 03/19/2020, 50% of all COVID-19 cases are located in ten counties from three states.*

## Highest COVID-19 Case Count - U.S.

### States

1. New York: 4,152
2. California: 870
3. Washington State: 1,187

### Counties

1. New York City County (NY): 2,469
2. Westchester County (NY): 798
3. King County (WA): 562
4. Nassau County (NY): 372
5. Snohomish County (WA): 310
6. Los Angeles County (CA): 192
7. Suffolk County (NY): 178
8. Santa Clara County (CA): 175
9. Cook County (IL): 178
10. Unassigned (WA): 167

## Virus Distribution Data

### Newly-Impacted Regions

#### Global

- Montenegro

### Case Totals Near Major Cities

#### Bay Area, CA, US

- San Francisco County
  - Confirmed: 51
  - Deaths: 0
- San Mateo County
  - Confirmed: 81
  - Deaths: 1
- Santa Clara County
  - Confirmed: 175
  - Deaths: 6
- Contra Costa
  - Confirmed: 41
  - Deaths: 0
- Alameda County
  - Confirmed: 31
  - Deaths: 0
- Sonoma County
  - Confirmed: 8
  - Deaths: 0
- Solano County
  - Confirmed: 9
  - Deaths: 0
- Marin County
  - Confirmed: 15
  - Deaths: 0

#### Boston Metro Area, MA, US

- Suffolk County
  - Confirmed: 51

■ Deaths: 0

- Middlesex
  - Confirmed: 100
  - Deaths: 0
- Norfolk
  - Confirmed: 45
  - Deaths: 0
- Berkshire
  - Confirmed: 17
  - Deaths: 0
- Worcester
  - Confirmed: 10
  - Deaths: 0
- Essex
  - Confirmed: 14
  - Deaths: 0

#### Chicago Metro Area, IL, US

- Cook County/Chicago
  - Confirmed: 178
  - Deaths: 1
- Kane County
  - Confirmed: 4
  - Deaths: 0
- McHenry County
  - Confirmed: 4
  - Deaths: 0
- Lake County
  - Confirmed: 18

- Deaths: 0
- Dupage County
  - Confirmed: 45
  - Deaths: 0

- Confirmed: 178
- Deaths: 2
- Bergen County, NJ
  - Confirmed: 114
  - Deaths: 0

**Greater Los Angeles, CA, US**

- Los Angeles County
  - Confirmed: 192
  - Deaths: 1
- Orange County
  - Confirmed: 42
  - Deaths: 0
- Riverside County
  - Confirmed: 16
  - Deaths: 3
- Ventura County:
  - Confirmed: 13
  - Deaths: 0

**Washington D.C. Metro Area, US**

- Washington D.C.
  - Confirmed: 40
  - Deaths: 0
- Loudoun County, VA
  - Confirmed: 5
  - Deaths: 0
- Fairfax County, VA
  - Confirmed: 14
  - Deaths: 0
- Charles County, MD
  - Confirmed: 2
  - Deaths: 0
- Arlington County, VA
  - Confirmed: 14
  - Deaths: 0
- Maryland, US
  - Confirmed: 86
  - Deaths: 1
- Virginia, US
  - Confirmed: 77
  - Deaths: 2

**NYC Metro Area, NY, US**

- New York City
  - Confirmed: 2,469
  - Deaths: 2
- Hudson County, NJ
  - Confirmed: 34
  - Deaths: 0
- Nassau County
  - Confirmed: 372
  - Deaths: 0
- Westchester County
  - Confirmed: 798
  - Deaths: 0
- Rockland County
  - Confirmed: 53
  - Deaths: 1
- Suffolk County

**London, UK**

- Confirmed:
  - UK: 2,626
    - London: 953
- Deaths:
  - UK: 103
    - London: *Data Unavailable*



## Active States of Emergency

WA	02/29/2020	CO	03/10/2020	MO	03/13/2020
FL	03/01/2020	CT	03/10/2020	AL	03/13/2020
CA	03/04/2020	MA	03/10/2020	NH	03/13/2020
HI	03/04/2020	MI	03/10/2020	SC	03/13/2020
MD	03/05/2020	NM	03/11/2020	ID	03/13/2020
IN	03/06/2020	AZ	03/11/2020	NE	03/13/2020
KY	03/06/2020	AK	03/11/2020	MN	03/13/2020
UT	03/06/2020	LA	03/11/2020	GA	03/13/2020
PA	03/06/2020	AR	03/11/2020	TX	03/13/2020
NY	03/07/2020	D.C.	03/11/2020	MS	03/14/2020
OR	03/08/2020	TN	03/12/2020	VT	03/14/2020
IA	03/09/2020	VA	03/12/2020	SD	03/13/2020
IL	03/09/2020	KS	03/12/2020	ND	03/13/2020
NJ	03/09/2020	DE	03/12/2020	WY	03/13/2020
OH	03/09/2020	MT	03/12/2020	OK	03/15/2020
RI	03/09/2020	NV	03/12/2020	ME	03/15/2020
NC	03/10/2020	WI	03/12/2020	WV	03/16/2020

## Governmental Guidance

### CDC

- The CDC has issued risk assessments for impacted areas, where Tier 1 is the lowest risk and Tier 4 is the highest risk:
  - Tier 4 (Widespread sustained transmission and restrictions on entry to the United States):
    - China
    - Iran
    - Most European Countries
    - United Kingdom and Ireland
  - Tier 3 (Widespread sustained transmission):
    - South Korea
  - Tier 2 (Sustained community transmission):
    - Global
    - Malaysia
  - Tier 1 (Risk of limited community transmission):

### WHO

World Health Organization has published information on preparing your workplace for COVID-19:

This document gives advice on:

1. Simple ways to prevent the spread of COVID-19 in your workplace
2. How to manage COVID-19 risks when organizing meetings & events
3. Things to consider when you and your employees travel
4. Getting your workplace ready in case COVID-19 arrives in your community

For further information see:

[www.who.int/docs/default-source/coronaviruse/getting-workplace-ready-for-covid-19.pdf?sfvrsn=359a81e7\\_6](http://www.who.int/docs/default-source/coronaviruse/getting-workplace-ready-for-covid-19.pdf?sfvrsn=359a81e7_6)

## Department of State

- The State Department issued travel advisories according to the following levels:
  - Level 4 - Do not travel:
    - China
    - Iran
    - Daegu, South Korea
  - Level 3 - Reconsider travel:
    - South Korea
    - Global
    - Israel and the West Bank
  - Level 2 - Exercise increased caution
  - Level 1 - Exercise normal precautions

Prior to any travel outside the United States, the State Department recommends checking its website for COVID-19-specific travel advisories [here](#).

## State & Local Governments

### California

As of 03/19/2020, California has 870 confirmed COVID-19 cases and 16 deaths. Yesterday, Governor Newsom issued an [executive order](#) to wave statewide testing for all K-12 California schools for this year, awaiting federal approval. This order would help alleviate the stress put on the more than six million students and educators in California possibly affected by school closures.

### Illinois

Today, 03/19/2020, Illinois has a total of 288 confirmed cases of COVID-19. Yesterday, Illinois Governor JB Pritzker signed an [emergency declaration](#) enabling haulers to get free Illinois Department of Transportation overweight trucking permits for moving emergency relief supplies in relief to the COVID-19 pandemic. This declaration is effective through April 12.

## Massachusetts

Today, 03/19/2020, Massachusetts has a total of 256 confirmed cases of COVID-19. Yesterday, House Speaker Robert DeLeo [alerted](#) House members and staff that a member of the Massachusetts House of Representatives tested positive for COVID-19. As of today, state and private labs in Massachusetts have [tested](#) a total of 2,271 people, and have 1,168 people currently under quarantine.

## New York

Today, 03/19/2020, the total number of cases of COVID-19 increased by 1,366 cases in the last 24 hours, bringing the total number of cases to 3,083 and 20 deaths in the state of New York. Yesterday, Governor Cuomo signed a bill that guarantees [paid leave](#) for individuals undergoing quarantine during this time.

## Washington D.C.

As of 03/19/2020, the Washington D.C.-region has a total of 203 confirmed COVID-19 cases—77 in Virginia, 86 in Maryland, and 40 in the District. D.C. Metro. Late on Wednesday night, Maryland [reported](#) its first death, a citizen from Prince George's County. Some grocery chains in the D.C. area are [offering](#) special shopping hours for seniors and people with compromised immune systems, to allow them to shop with smaller crowds.

## Publicly-Available Company Policies

*Note: New additions are highlighted in blue.*

### Office Closures

- **Carta:** All offices closed until 03/31.
- **Confluent:** All offices closed, globally.
- **Fastly:** Closing all offices, including San Francisco.
- **Gap:** Corporate office in New York closed due to COVID-19 positive test in that office.
- **GoCardless:** All offices closed until further notice.
- **Grammarly:** San Francisco, New York, and Vancouver employees mandated to work from home; Kyiv employees encouraged to work from home.
- **Nike:** European HQ.
- **Masterclass:** Los Angeles & San Francisco offices working from home.
- **Moz:** Closing Seattle and Vancouver offices until 03/19.
- **OKCoin:** Mandated to work from home in San Francisco and Malta locations effectively.
- **OTICON:** Closed down Danish headquarters and asked employees to work remotely.
- **PhRMA:** Closed DC headquarters.
- **United Airlines:** Offering employees up to 6 months unpaid leave.

### Remote Work/Interviews

- **23andMe** - Encouraging work from home; empowering employees to work from home based on their own situation (response to school closures, sick household members, etc.).
- **Adobe:** Asking Seattle and Bay Area employees to work from home through 03/23.
- **ADP:** Enabling work from home capabilities.
- **Airbnb:** San Francisco employees encouraged to work from home and no approval needed. Seattle office closed.
- **Amazon:** All onsite candidate interviews moving to video.
- **Autodesk:** Encouraging work from home.
- **Boeing:** Encouraging Seattle-area employees to work from home.
- **Bullhorn:** "Suspended" handshakes, a switch to Zoom meetings whenever possible, and implemented an external visitor process that sees their policy communicated to visitors 24 hours before a meeting, encouraging cancellation or online meetings where symptoms may be experienced. No office closures at this time.
- **Box:** Work from home for all locations.
- **ButcherBox:** Mandatory work from home starting 03/16.
- **Catalyst:** Work from home (New York) on a week-by-week basis.

- **Cloudera:** Suspended all non-essential travel and mandated work from home for all employees, globally. Onboarding to be done virtually. Restricted all travel to China, Bangalore, Iran, Hong Kong, Japan, Italy, and South Korea. Restricting visitor access in all our offices to business critical meetings only. Suspending meal services in all offices globally. Interviews with candidates via videoconferencing.
- **Coinbase:** Optional work from home starting 03/09, also providing \$250 stipend per employee for video conferencing equipment.
- **Confluent:** Requiring work from home globally; all interviews transitioning to remote.
- **Dialpad:** All employees are required to work from home.
- **DNAnexus:** All employees strongly encouraged to work from home from both San Francisco and Mountain View offices.
- **Docusign:** Requiring remote work.
- **Dolby:** Option to work remote.
- **Drift:** Work from home required across all offices (Boston, San Francisco, Tampa and Seattle). Reassessing every Friday.
- **eCarta:** Work from home, Seattle and San Francisco offices shut down.
- **Elastic:** Mandatory work from home.
- **Eli Lilly and Co:** Encouraging all U.S. employees to work from home if possible.
- **Ellucian:** Candidate interview travel has been suspended for 45 days; opting to utilize video interviewing instead. All candidates have a choice to either come into office or opt for a video interview.
- **Expedia:** Encouraging Seattle employees to work from home.
- **Facebook:** Moving to all video interviews to restrict visits to physical offices, asked all Bay Area employees to work from home through March.
- **Federal Reserve Bank of Chicago:** Non-critical employees asked to work remotely for 2 weeks (starting 03/12) then reevaluate.
- **Glassdoor:** All employees asked to work from home until further notice (same parent company as Indeed).
- **Grammarly:** San Francisco, New York, and Vancouver employees mandated to work from home; Kyiv employees encouraged to work from home; conducting all candidate interviews by video.
- **Genie:** Work from home, Redmond Office.
- **Google:** Asking all North American employees to work from home until 04/10.
- **Handshake:** Encouraging all employees to work from home 03/09 to 03/20 (reviewed weekly to determine if they extend).
- **HelloBetter.de:** Instituted work from home for all global employees.
- **Hometree.co.uk:** Running work from home mandatory policy until further government advice for all employees.
- **Houzz:** Work from home in Bay Area, but offices will still be open for those who want to work in office. Will be monitored on a week-to-week basis.
- **Indeed:** All employees requested to work from home (same parent company as Glassdoor) -- possibly for the whole year.

- **Intel:** Recommending employees work from home.
- **Internxt:** All employees are encouraged to work from home.
- **JP Morgan:** Managers requested that about 10% of staff across its consumer bank work remotely as part of the plan's resiliency testing.
- **LA Times:** Restricting employee travel and encouraging work from home.
- **LinkedIn:** Bay Area employees asked to work from home through March.
- **Lyft:** San Francisco and Seattle employees encouraged to work from home.
- **OKCoin:** Allowing employees to work from home. Preparing for mandatory work from home should situations change near office locations.
- **Okta:** Directed Bellevue, San Francisco, San Jose, London, Paris, Amsterdam employees to work from home.
- **PolicyGenius:** Optional work from home.
- **Pure Storage:** Work from home, Seattle / Bellevue, Mountain View.
- **Mattermost:** Majority of staff is remote, recommend work from home for San Francisco.
- **Microsoft:** Allowing San Francisco/Seattle employees to work from home through March 9th.
  - Official Microsoft guidance.
  - LinkedIn tells Bay Area employees to work from home through March, if possible, and is also asking employees to postpone all non-essential business travel and will not participate in external events in March and April.
- **Mozilla:** Strongly recommending work from home for all employees until 03/27. Non-essential travel cancelled until further notice.
- **Nextdoor:** All global employees strongly encouraged to work from home; all interviews are to be conducted remotely.
- **Nordstrom:** Encouraging employees to work from home if they can.
- **PolicyGenius:** Optional work from home.
- **Reflektive:** All domestic and international travel on hold, no visitors in offices, supporting work from home, all interviews done remotely. Reassessing every weekend.
- **REI:** Seattle, work from home.
- **Salesforce:** Encouraging Seattle Salesforce/Tableau employees to work from home through March. Strongly encouraging all employees across California and New York to work remotely for the month of March.
- **Securities and Exchange Commission (SEC):** Asked DC employees to telework.
- **Sisense:** Highly encouraged work from home for all locations.
- **Spotify:** New York employees asked to work remotely through March.
- **Square:** Suspended visitors and certain teams being encouraged to work from home in Seattle, San Francisco, Dublin, Ireland, and London.
- **StayingHomeClub:** A running list of tech companies work from home/travel/conference plans.
- **Stride:** Work from home is strongly encouraged in San Francisco (only office location), but the office will still be open for those who want to work in office. Will be monitored on a daily/weekly basis.



- **Stripe:** Encouraging/requiring work from home, suspending visitors, video interviews.
- **SurveyMonkey:** Allowing employees flexibility to work from home through 03/20.
- **Textio:** Encouraging remote work and suspending travel.
- **Thrive Digital:** Team members recommended to work from home until 03/31; however, the office remains open (for now). In-person interviews have been rescheduled to video calls. Non-team member office visitors are restricted.
- **TMobile:** Work from home, Seattle/Bellevue.
- **Twitter:** Encouraging all employees who are able to work from home, video interviews.
- **VSCO:** Offering optional work from home, no social visitors, video interviews.
- **WalkMe:** All employees have been notified that they can work from home if they feel more secure. Currently, the offices are open. A full day of remote work is implied in the Tel Aviv office to test the systems on Sunday (work day).
- **Washington Post:** Asking employees to work from home.
- **WSurveyMonkey:** Allowing employees flexibility to work from home through 03/20.
- **XWiki:** Fully remote until further notice.

## Travel Restrictions

- **23andMe:** Banned travel to affected areas as listed by CDC and instructed employees to only attend critical conferences.
- **ADP:** All non-essential business travel is limited.
- **Amazon:** All non-essential travel (including all onsite candidate interviews, now going to video).
- **Aptiv:** All travel (currently through end of March).
- **Atlassian:** Restricting to only high-business impact travel.
- **Audley Travel:** All inter-office travel; only essential familiarization trips to non-categorised areas.
- **Automattic:** Pausing all business travel and discouraging personal travel.
- **Bottomline Technologies:** All non-essential travel (including all onsite candidate interviews now going to video).
- **Bullhorn:** Maintaining a list of regions where travel is banned and restrictions on all cross-border travel without authorization.
- **Cargill:** Suspending all non-essential business travel.
- **Cloudera:** Suspended all non-essential travel and mandated work from home for all employees, globally.
- **Comparably:** Suspended all non-essential travel and mandated work from home for all employees.
- **Confluent:** Suspending all non-essential travel. Implementing "no questions asked" opt-out for essential travel.
- **CVSHealth/Aetna:** Suspending travel until May.

- **DNAnexus:** Restricted all travel unless reviewed and approved by C-Level.
- **Dolby:** All company travel restricted.
- **Drift:** All company travel restricted.
- **Ellucian:** Suspending all internal employee travel for 45 days; employees are able to opt-out of any and all customer travel.
- **Ford:** Restricting all global travel until 03/27.
- **GitHub:** All non-essential travel.
- **Gitlab:** Restricted all non-essential, cross-border travel.
- **GoCardless:** All business travel until the end of April.
- **Google:** All international travel.
- **Grammarly:** Pausing all business travel and discouraging personal travel.
- **Handshake:** Travel only for key business priorities.
- **Harvard University:** Restricting travel through 04/20.
- **Havas:** Per an internal memo issued by CEO Yannick Bolloré, business travel to areas including South East Asia, Milan and Venice is suspended. Employees coming back from a business trip in those areas have to work from home for 14 days.
- **HelloBetter.de:** Banned international travel.
- **IBM:** Suspending travel for internal meetings, external events with 1,000+ attendees, non-critical international travel.
- **inFeedo:** Pausing all non-essential travel.
- **Intel:** All Travel and Conferences attendance or meetings with people you can't track where they came from.
- **JP Morgan Chase:** Restricting non-essential global and domestic travel.
- **LA Times:** Restricting employee travel and encouraging work from home.
- **L'Oreal:** Suspending business travel through March.
- **Mattermost:** Strongly discouraging international business travel and non-essential local travel.
- **Nestle:** Restricting international business travel until mid-March.
- **Nike:** Partial restrictions.
- **OKCoin:** Suspended all business travel until further notice; discouraging personal travel.
- **Okta:** Restricting non-essential travel.
- **Paycor:** All non-essential travel (including candidate travel).
- **Shoppable:** All non-essential travel.
- **Salesforce:** All non-essential travel.
- **Sisense:** Suspended all non-essential travel, supporting employee requests for travel avoidance.
- **Slack:** Strongly encouraging all employees to work from home through the end of March. Tokyo & Osaka offices closed.
- **Square:** Pausing all business travel and discouraging personal travel.
- **Stanford University:** Moves all classes online for the remainder of winter quarter.

- **Stride:** Pausing all business travel; self-quarantine (14 days) after personal international/domestic travel case-by-case depending on where they are coming from.
- **Stripe:** Paused global business travel.
- **Tenable:** Onboarding of new members is now online only.
- **Textio:** Encouraging remote work and suspending travel.
- **Thrive Digital:** All business and conference travel is temporarily restricted. Team member travel is not restricted, but those returning from breakout zones will be required to work from home for a period of 14 days.
- **Twitter:** All non-essential travel (including candidate travel).
- **Unilever:** Restricted to “business-critical” travel.
- **Vertiv:** International and domestic trips restricted.
- **VSCO:** Paused international travel and non-essential domestic travel.
- **WalkMe:** All non-essential business travel is limited, including candidates and international travel.
- **World Bank/IMF:** Moving spring meetings to virtual.

## School Closures Near Major Cities

*Note: EoS stands for End of Semester*

### Bay Area School Districts and Colleges

*Note: Due to large number of school closures see [here](#) for additional closings.*

- 03/12- 04/03 All 113 San Francisco Public Schools (SFUSD)**
- 03/11-30: Academy of Art University
- 03/11-12: Archdiocese of San Francisco Schools
- 03/16-04/12: Cal State East Bay, Hayward
- 03/11-12: City College of San Francisco
- 03/07-16: Elk Grove Unified School District, Sacramento County
- 03/08-10: ICA Cristo Rey, San Francisco
- 03/09-12: Juniper Serra, San Mateo
- 03/11-14 Laney College
- 03/05-10: Lowell High School
- 03/12-04/05: Mission College, Santa Clara
- 03/09-12: Notre Dame, Belmont
- 03/16-TBD: Oakland Holy Names University
- 03/11-14: Peralta Community College District
- 03/10-27: San Jose State University
- 03/10-16: San Francisco State University
- 03/10-04/13: Santa Clara University
- 03/08-10: School of the Epiphany, San Francisco
- 03/09-29: University of California Berkeley

### Boston Metro Area School Districts and Colleges

*Note: Due to large number of school closures see [here](#) for additional closings.*

- 03/16-04/07: All public and private primary and secondary schools closed**
- 03/12-13: Amherst College
- 03/13: Babson College (classes fully online)
- 03/12: Berklee College of Music (classes fully online)
- 03/12-EoS: Boston College (classes suspended)
- 03/11-13: Boston University (classes fully online)
- 03/12-16: Bunker Hill Community College
- 03/12-20: Brandeis (Waltham)

03/16-20: Bridgewater State University  
03/17-27: Bryant University  
03/11-22: Curry College  
03/13-20: Emerson, Boston  
03/11-17: Emmanuel College  
03/28-TBD: Harvard University  
03/14: Holy Cross  
03/12-13: Lincoln School (Brookline)  
03/16-22: Massachusetts College of Art and Design  
03/12-22: Merrimack College  
03/12-TBD: MGH Institute of Health Professions  
03/16-20: MIT University, Cambridge  
03/12-EoS: Northeastern University, Boston (classes fully online)  
03/14-20: Smith Colleges  
03/14-20: Stonehill (Easton)  
03/18-EoS: Suffolk, Boston  
03/16-25: Tufts, Somerville  
03/11-TBD: University of Massachusetts  
03/16-27: Westfield State  
03/13-29: Worcester State

## Chicago Metro Area School Districts and Colleges

*Note: Due to large number of school closures see [here](#) for additional closings.*

**03/17-27: Illinois Governor J.B. Pritzker ordered all K-12 schools closed**  
03/16-TBD: DePaul University  
03/13-TBD: Illinois State University  
03/16-TBD: Loyola University  
03/16-30: Northeastern Illinois University  
03/13-TBD: Northwestern University  
03/13-TBD: University of Illinois  
03/30-06/13: University of Chicago

## D.C. Metro Area School Districts and Colleges

*Note: Due to large number of school closures see [here](#) for additional closings.*

**03/16-27: Virginia Governor Ralph Northam ordered all K-12 schools closed**  
**03/16-27: Maryland Governor Larry Hogan ordered all K-12 schools closed**  
**03/16-31: District of Columbia Public Schools (Distance Learning)**  
03/10-04/03: American University

03/16-TBD: George Washington University  
03/12: Golden Pond School  
03/16: The New School of Northern Virginia  
03/11-13: New York University, Washington D.C.  
03/16-17: Northern Virginia Community College

## Greater Los Angeles School Districts and Colleges

*Note: Due to large number of school closures see [here](#) for additional closings.*

**03/16-04/06 Bonita Schools (BUSD)**  
**03/16-03/30 Conejo Valley Schools (CVUSD)**  
03/26-26: California State University, Fullerton  
03/12-18: California State University, Long Beach  
03/30-04/03: Cal State University, Channel Islands  
03/11-04/06: Caltech  
03/16-04/17: Long Beach (LBUSD)  
03/12-18: Los Angeles Community College District  
**03/16-30: Los Angeles Public Schools (LAUSD)**  
03/16-31: Loyola Marymount University  
03/14-04/03: Mount Saint Mary's University  
03/11-13: New York University, Los Angeles  
03/13-TBD: Pepperdine University  
**03/16-TBD San Diego Schools (SDUSD)**  
**03/16-30: Simi Valley Schools (SVUSD)**  
03/11-TBD: UCLA  
03/11-TBD: UC Irvine  
03/11-04/03: UC Riverside  
**03/16-04/10 Ventura Schools (VUSD)**

## NYC Metro Area School Districts and Colleges

*Note: Due to large number of school closures see [here](#) for additional closings.*

*Note: All public schools are closed in NYC.*

03/09-13: Barnard College, NYC  
03/12-13: Bedford Schools, Westchester  
03/11-17: Bergen Center for Child Development  
03/09-13: The Brearley School, NYC  
03/13-TBD: Brooklyn College Academy  
03/16: Cranford School District, NJ  
03/11-21: East Ramapo School District

03/09-29: Fordham University, NYC  
03/12-13: Greenport Union Free School District, Long Island  
03/14-04/04: Harlem School of the Arts  
03/10-13: Hofstra University, Long Island  
03/10-31: Horace Mann School, NYC  
03/09-23: Iona College, New York  
03/16-29: Juilliard School, NYC  
03/11-EoS: Keio Academy of New York (classes fully online)  
03/12-13: Nassau County Community College, Long Island  
03/11-22: New York University, NYC  
03/12-03/20: Plainview School District, Long Island  
03/12-TBD: Princeton University, NYC  
03/13-TBD: Richard H. Hungerford School at New Dorp High School  
03/11-27: Rowan University, NJ  
03/12-04/03: Rutgers University, NJ  
03/11-29: Sacred Heart University  
03/12-22: Sag Harbor School District, Long Island  
03/09-18: Scarsdale School District  
03/11-20: Skidmore College, NY  
03/12-27: St. John's University, Queens  
03/12-30: Syracuse University, NY  
03/12-25: Tuckahoe Union Free School District, NY  
03/12-16: Trenton New Jersey School District  
03/09-17: Westchester Day School  
03/12-03/13: West Islip, Long Island  
03/09-16: Yeshiva University, NYC

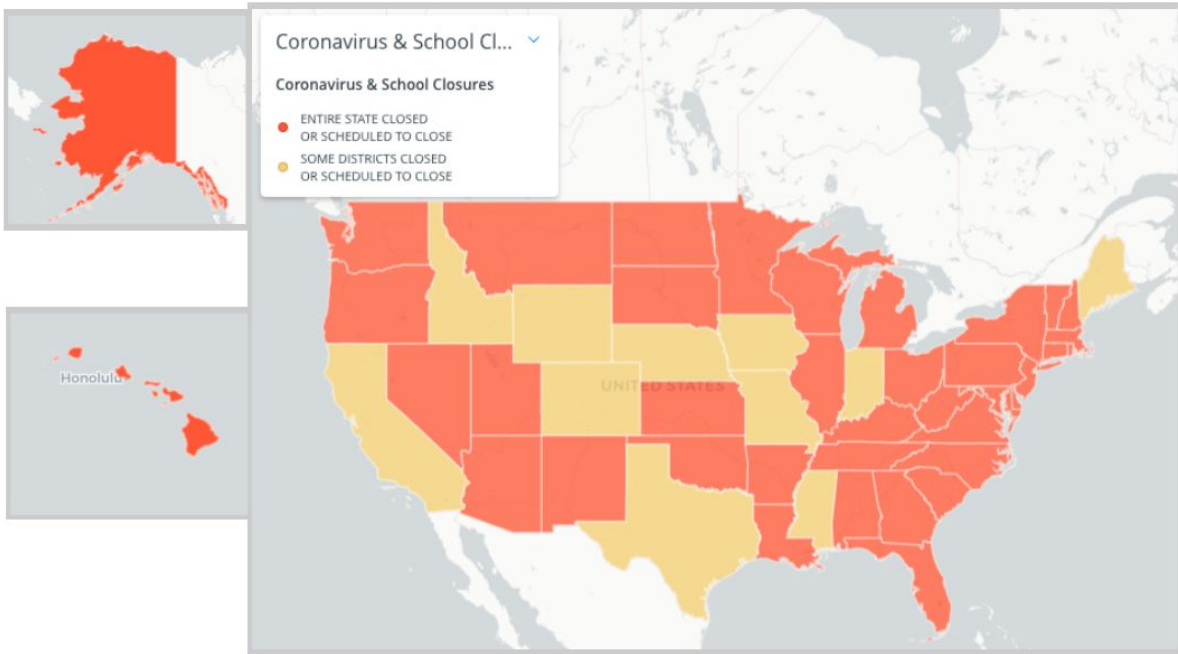
## London, UK School Districts and Colleges

*Note: To check for local school closures in the UK see [here](#).*

**All schools in England and Northern Ireland are closed from 03/20 until further notice.**

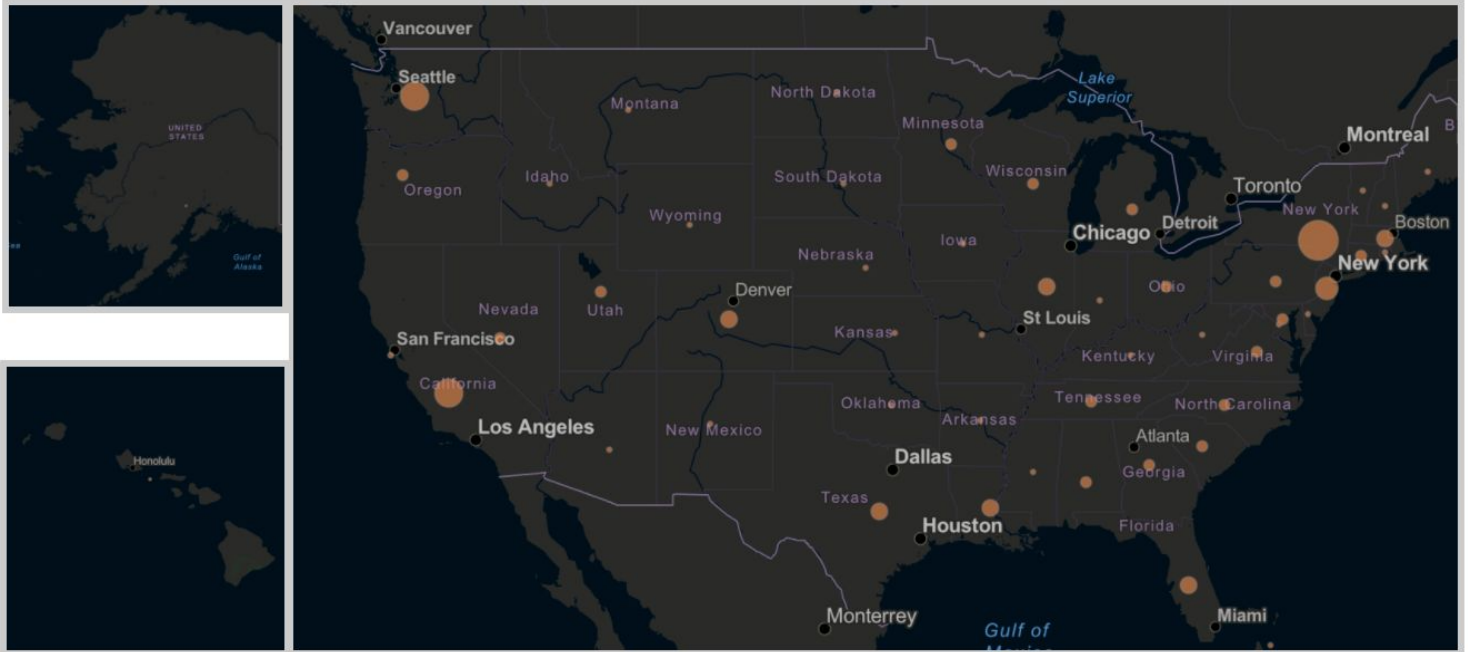


## Map of Active School Closures - U.S.



Source: [www.edweek.org/ew/section/multimedia/map-coronavirus-and-school-closures.html](http://www.edweek.org/ew/section/multimedia/map-coronavirus-and-school-closures.html)

## Map of Active Reported Cases - U.S.



Source: <https://www.arcgis.com/apps/opsdashboard/index.html#/bda7594740fd40299423467b48e9ecf6>

## Map of Active Reported Cases - Global



Source: <https://www.arcgis.com/apps/opsdashboard/index.html#/bda7594740fd40299423467b48e9ecf6>

## End Report