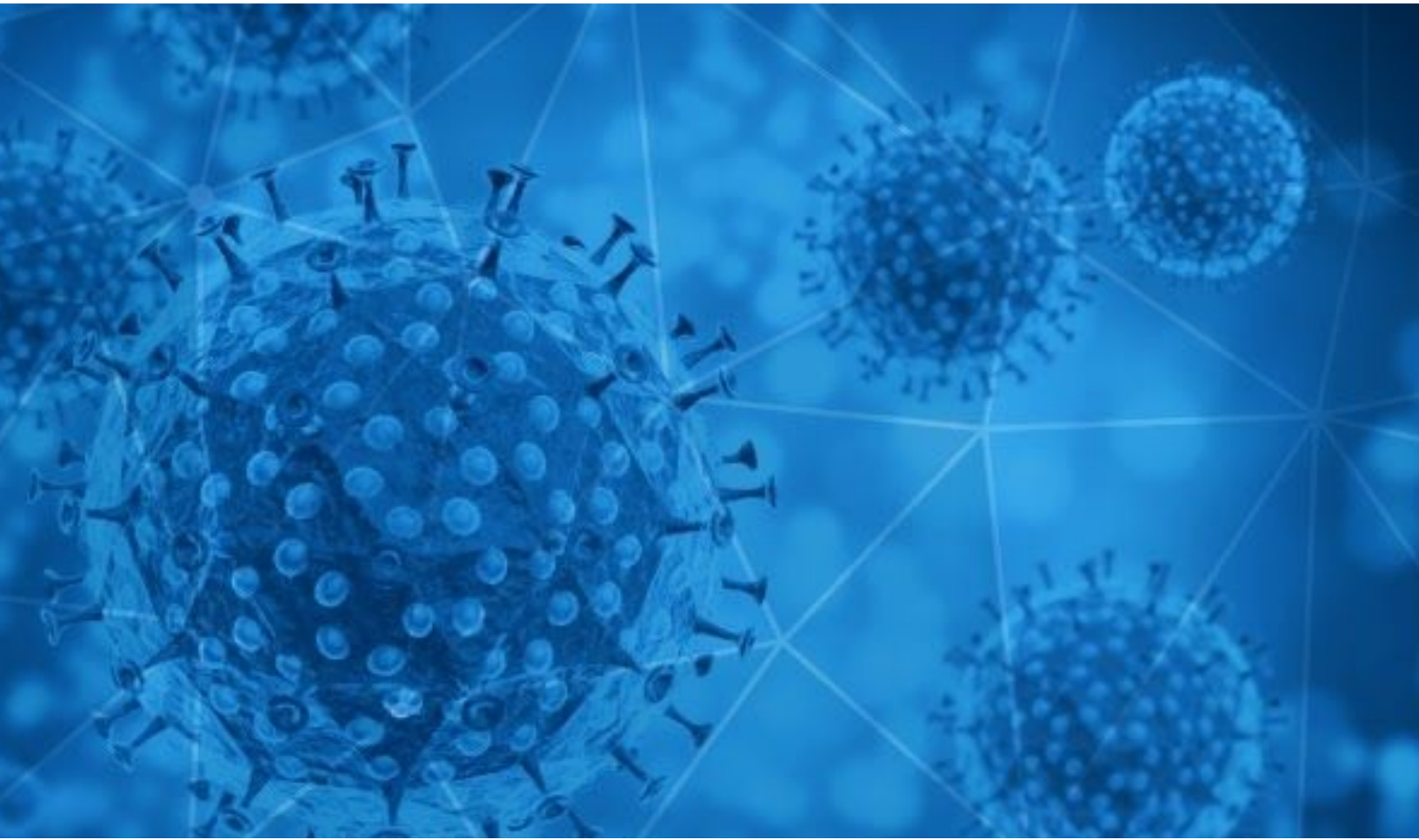




**RiskIQ i3:**

# COVID-19 Daily Update

03/20/2020



# Table of Contents

<b>Methodology</b>	<b>3</b>
<b>Disclaimer</b>	<b>3</b>
<b>The Week in Review</b>	<b>4</b>
<b>Notable Events: Previous 24 Hours</b>	<b>6</b>
<b>Digital Exploitation</b>	<b>8</b>
Blacklist Data	9
COVID-19 Email Spam Statistics	10
COVID-19 Host, Domain, and Mobile App Tracking	13
<b>Consumer Landscape</b>	<b>14</b>
<b>Facts and Figures at a Glance</b>	<b>15</b>
Global	15
US	15
Highest COVID-19 Case Count - US	15
<b>Virus Distribution Data</b>	<b>16</b>
Newly-Impacted Regions	16
Case Totals Near Major Cities	16
<b>Active States of Emergency</b>	<b>18</b>
<b>Governmental Guidance</b>	<b>19</b>
CDC	19
WHO	19
Department of State	20
State & Local Governments	20
<b>Publicly-Available Company Policies</b>	<b>22</b>
Office Closures	22
Remote Work/Interviews	22
Travel Restrictions	25
<b>School Closures Near Major Cities</b>	<b>28</b>
<b>Map of Active School Closures - US</b>	<b>30</b>
<b>Map of Active Reported Cases - US</b>	<b>31</b>
<b>Map of Active Reported Cases - Global</b>	<b>32</b>

## Methodology

*The information provided in this report is limited to open source and publicly available data discovered through standard, commonly known browsing techniques and keyword searches. To provide efficient results, RiskIQ may use websites that require payment in exchange for aggregation of data that is otherwise publicly available without payment and could be obtained by anyone accessing the correct sites or engaging the correct third parties to obtain the information. Information presented in this report is cross-checked against multiple sources for full verification; however, some assessments and conclusions are based on incomplete information and represent the RiskIQ analyst's judgment based on patterns and data available.*

## Disclaimer

*The information provided in this report is "as-is" and Customer acknowledges and agrees that RiskIQ makes no representation or warranty, express or implied, as to the accuracy or completeness of the information. Customer agrees that RiskIQ shall not have any liability resulting from Customer's use of this information.*

## The Week in Review

The period of 12-19 March 2020 witnessed an escalation in national and local governmental responses to the global spread of COVID-19.

Seven days ago, the US had a total of 1,215 cases across 43 states with 36 fatalities, 31 of which were in [Washington State](#). President Trump enacted a 30-day travel ban for Europe, and the city of Washington, DC declared a state of emergency. The Democratic Party held its presidential debate without an audience, the NBA and the NHL suspended league play, the NCAA cancelled basketball tournaments, and—for only the fourth time in its history—Disneyland closed. Schools in major US metropolitan areas began to suspend classes (but not in London, UK), yet most companies were still open for business.

Globally, COVID-19 cases totalled 125,048 across 118 countries, with 4,613 fatalities (69 percent in [China](#) and 18 percent in [Italy](#)).

By yesterday, 19 March, total cases in the US had increased 675 percent to 9,415, while fatalities increased 317 percent to 150 (68 of which were in Washington State). In spite of the dramatic increase, 50 percent of all cases were located in [just 10 counties](#) in the US (out of 3,242 counties across the country). Worldwide, the number of cases increased by 78 percent to 222,642, and the number of fatalities nearly doubled to 9,115 (36 percent in China, 33 percent in Italy).

The rapid spread and associated victimology of the last seven days spurred national and local leaders to impose additional measures to protect their populations. Four events over the last 24 hours underscore the lengths to which governments—in cooperation with one another—are going to arrest the spread of this disease. First, the [US and Canada](#) agreed to close their border to non-essential travel effective the evening of 20 March. Then the [state of California](#) ordered all 39.9 million of its citizens to shelter in place. The [state of New York](#) followed suit, directing its 19.4 million citizens to remain indoors. Fourth, the [US and Mexico](#) agreed to limit non-essential travel across their border.

One of the most important pieces of data driving these decisions is transmission efficiency. Little is still known about transmission efficiency for COVID-19, but according to a 29 January report in the [New England Journal of Medicine](#), Dr. Qun Li estimated COVID-19's transmission efficiency to be 2.2. Per Dr. Anthony Fauci, Director of the National Institute of Allergy and Infectious Diseases, this means each infected person spreads the disease to an average of two additional persons. Until this rate drops below 1.0, the [disease will continue to spread](#).

In this context, the [CDC's](#) most recent study, published 18 March, points to the importance of the strategy adopted by most countries (including the United States) to “flatten the curve.” In short, flattening the curve means slowing the spread of the virus to new patients in order to minimize the number of new cases so as not to overwhelm existing healthcare infrastructures, in

particular the all important intensive care units. The drawback to flattening the curve is that the virus never truly “spikes.” Instead, it lingers among the population for a longer period of time.

But when we examine the CDC’s results for the period 12 February - 16 March we learn that—in the United States at least—the virus appears to be affecting most age groups, not just the elderly. Among 2,449 patients studied where their age was known, 6 percent were over 85, 25 percent were between 65–84 years, 36 percent were between 45–64 years, and 29 percent were 20–44 years. Only 5 percent of cases occurred in persons aged 0–19 years. The CDC’s findings were consistent with the statistics coming out of other countries; specifically, the older the patient, the greater the likelihood of being hospitalized and dying. But of the 508 patients from this group who had been hospitalized, 38 percent were between 20-54. Moreover, nearly half of the 121 patients admitted to intensive care units were adults under 65. This new data could prove significant in that it shows a wider range of adults may be susceptible and require hospitalization. (Note: An upcoming RiskIQ report will compare this data with data from three other regions: Italy, South Korea, and the Diamond Princess cruise ship.)

Looking ahead to the coming week, RiskIQ assesses more governors and mayors across the US will feel the pressure either to encourage or to mandate “shelter-in-place” for their citizens. As of 19 March, 27 governors had activated [National Guard](#) units to provide medical testing and assessments, facilities, ground transportation, and logistics and planning.

To date, US President Donal Trump has resisted the idea of federalizing the Guard or issuing a national shelter-in-place order, preferring state and local leaders make such decisions based on the conditions prevalent in their respective areas. RiskIQ does not anticipate President Trump changing either course in the immediate future.

## Notable Events: Previous 24 Hours

The US and Mexico agreed to limit non-essential travel between the two nations, by prohibiting recreational and tourist travel. Both nations agreed to send everyone caught crossing the border illegally back to their native countries. Secretary of State Mike Pompeo said the restrictions would become effective at midnight on Friday, 03/20/2020.

Pennsylvania Governor Tom Wolf ordered all [non-life-sustaining businesses](#) closed beginning 03/19/2020 at 8:00 P.M. Pennsylvania officials consider grocery stores, gas stations, auto parts stores, banks, health care, and social assistance services as life-sustaining businesses.

California health officials [predicted](#) 56% of the state's population—25.5 million people—will contract COVID-19 within the next eight weeks. Governor Gavin Newsom requested the USNS Mercy be deployed off the coast of California to provide relief. (This request came after the US Department of Defense announced [USNS Mercy](#) would set sail Monday for the Seattle area.) Newsom reported there were 80,000 unemployment insurance claims on 03/17/2020; the average daily amount of claims is 2,000.

[California governor Gavin Newsom](#) issued a “stay at home” order for the entire state, effective Thursday night. The order affects nearly 40 million people and includes the strictest measure in the US to date. Under state law, violations are punishable by a fine of up to \$1,000 or imprisonment for no more than six months; however, Newsom and local officials have stressed they do not plan to have police handling enforcement. Individuals will be allowed to leave home for essential activities, such as going to the grocery store or pharmacy. [Essential businesses](#) will remain open during this time; California considers gas stations, pharmacies, grocery stores, food banks, farmers markets, and restaurants that offer takeout and delivery service to be essential services.

[New York Governor Andrew Cuomo](#) ordered [100% of non-essential businesses](#) in New York to keep their workforce at home. He also announced today that New York, Connecticut, New Jersey, and Pennsylvania will temporarily close all barber shops, nail and hair salons, tattoo shops, and similar services in all four states effective tomorrow at 8 p.m. [Pennsylvania Governor Tom Wolf](#) further ordered all non-life-sustaining businesses in Pennsylvania to close their physical locations as of 8 p.m. Thursday, and enforcement actions will be taken against businesses that don't comply. Among the businesses not included in the order to shut down: grocery stores, gas stations, auto part stores, banks, healthcare facilities, and social assistance services. Restaurants can still offer take-out, delivery, and drive through services.

Carnival Corporation offered its cruise ships as [temporary floating hospitals](#) to authorities around the world, but requested any interested parties cover the costs of the ship's operations

while in port. Under the proposal, local governments or hospitals would provide medical services while Carnival handled maritime operations, cleaning, and food services.

Treasury Secretary Steven Mnuchin announced on [Twitter](#) that Tax Day will be pushed from 04/15/2020 to 07/15/2020 to help accommodate taxpayers experiencing difficulties during the pandemic. There will be no interest or penalties for individuals and businesses during this extension.

Louisiana Governor John Bel Edwards announced the [activation](#) of 238 soldiers and airmen from the Louisiana National Guard in addition to full-time Guardsmen to help respond to the crisis; a total of 400 Guardsmen are now activated in the state. Troops are providing medical support, engineering assessment support, shelter security, traffic control point and drive-through testing site support.

Massachusetts officials [deployed](#) 2,000 National Guard to assist with equipment, logistics and warehousing.

Florida's National Guard opened its first [drive-through testing site](#) in Broward County. Florida Governor Ron DeSantis expects the site to have 100 National Guard troops available at the location.

Hong Kong officials announced a mandatory fourteen-day quarantine on all incoming travelers which will be [monitored](#) through tracking technology. All individuals arriving in the city-state will be required to wear a wristband which tracks movement. Officials attempted to address privacy concerns by stating the app will not capture location data directly, but will capture changes in location. An individual who had been ordered to wear this device reported that he was told to walk the perimeter of his quarantine residence to establish a geofence. Officials may also conduct surprise video calls to ensure compliance with quarantine procedures.

Isabel Diaz Ayuso, president of the Region of Madrid, declared 80% of the city's population is [expected to contract COVID-19](#). Ayuso said many will have mild symptoms, but approximately 15% are at risk of more severe symptoms. Ayuso further stated those who are vulnerable, such as elderly persons with pre-existing conditions, could die within 24-48 hours.

Italian Prime Minister Giuseppe Conte announced the [lockdown](#) period must be extended to help combat the continued spread of the virus. French officials said they will likely follow Italy's example and extend their lockdown as well.

## Digital Exploitation

The [FBI announced](#) that with the “significant spike” in scams across the nation it anticipates criminals will zero in on three states with high rates of infections: Washington, California and New York. The FBI also noted an increase in targeting employees working from home. It said cyber criminals are using fraudulent software which mimic remote access tools like VPN in order to insert malware into networks through employees working remotely. All these scams in some way seize on the COVID-19 theme, and in many cases target the elderly, who are at the highest risk for infection.

[Secretary of State Mike Pompeo](#) on Friday accused China, Russia and Iran of carrying out disinformation campaigns related to COVID-19, in what is an apparent effort to sow fear and confusion. Pompeo described the disinformation campaigns as “pretty diffused,” adding that the government has seen individuals, as well as the three foreign adversaries, spread false information online. Pompeo’s statement is consistent with a [Reuters report](#) we highlighted yesterday indicating the Russian media had deployed a “significant disinformation campaign” against the West to worsen the impact of the coronavirus, generate panic and sow distrust. (Please see RiskIQ’s i3 “COVID-19 Daily Update, dated 03/19/2020, for more information.)

Related, there is an ongoing phishing campaign delivering emails written to appear as official messages from the Director-General of the World Health Organization (WHO). The emails actively spread [HawkEye malware](#) payloads onto the devices of unsuspecting victims. HawkEye is designed to steal information from infected devices, but it can also be used as a loader, leveraging its botnets to fetch other malware into the device as a service for third-party cyber crime actors.

The US government is in active talks with [Facebook](#), [Google](#) and a wide array of tech companies and health experts about how it can use data gleaned from Americans’ phones to combat COVID-19, including tracking whether people are maintaining a safe distance from one another. [Israel](#) and [China](#) already use similar technology to combat the spread. According to the [Electronic Frontier Foundation](#) many government agencies collect and analyze personal information about large numbers of identifiable people, including their health, travel, and personal relationships.

## Blacklist Data

hxxps://covid-19-business-continuity-epic-uk-limited[.]azurewebsites[.]net/corona\_virus\_2020/

hxxps://raymondne[.]buzz/covid-19precautions/toda/office.php

hxxp://coronavirus2020covid-19[.]000webhostapp[.]com/

hxxp://coronavirustest[.]ru/

hxxps://covid-19[.]style/

hxxps://footytube[.]top/admin/covid-19/office365/office365/office365/office365/office365/office365/  
office365/99deac8eaceb2aeb3b9cbecf26e98d7/zhgvnftl319coe8qzzzkvjnc.php

hxxp://covid-19[.]bdtime[.]news/

hxxps://ayyappantat[.]com/img/view/covid-19/index.php

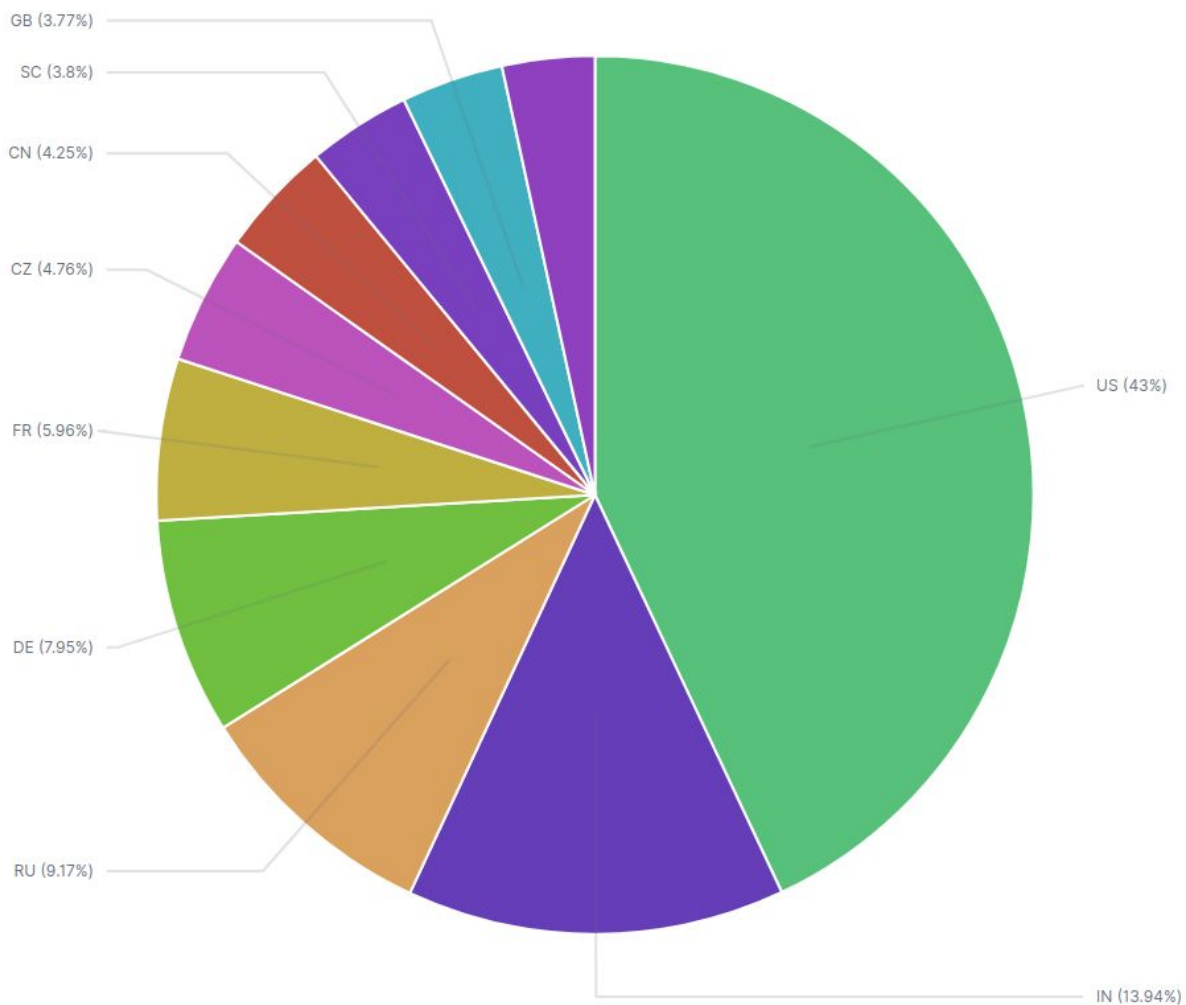
hxxps://starilionpla[.]website/do/covid-19/index.php?l=\_jehfuq\_vjoxk0qwhtogydw\_product-userid

hxxps://verizoncovid-19[.]com/

hxxps://urschel-mosaic[.]com/covid-19/onedrive


## COVID-19 Email Spam Statistics

RiskIQ analyzed its spam box feed for the time period of 03/19/2020-03/20/2020. During this period, RiskIQ analyzed 202,558 spam emails containing either “\*corona\*” or “\*covid\*” in the subject line. There were 20,387 unique subject lines observed during the reporting period. The spam emails originated from 14,232 unique sending email domains and 20,337 unique SMTP IP Addresses. Analysts identified 1,558 emails which sent an executable file for Windows machines.



*Spam emails by country of origin*

## Top 25 Subjects

1. 20,937 - The Mask that can prevent Coronavirus now
2. 14,974 - Join the fight against Coronavirus
3. 10,315 - Coronavirus is spreading, this specialized mask can control it
4. 5,891 - CORONAVIRUS ALERT: FREE Breathing Masks For USA
5. 5,167 - Pesan dari Co-CEO Gojek: Bagaimana Kami Mengupayakan Semuanya Aman di Tengah Tantangan COVID-19
6. 4,420 - [COVID-19] Não Dependia do SUS... Faça Uma Simulação Gratuita Bradesco Saúde
7. 4,300 - [COVID-19] Bradesco Saúde Lança Simulador Online de Seguros de Saúde
8. 3,743 - Get Your Household Ready for Coronavirus disease (COVID-19)
9. 3,163 - Hereâs what to take to boost your bodyâs defenses to the coronavirus
10. 2,355 - Coronavirus: Cuide da sua saúde e evite aglomerações
11. 2,215 - Leitura Obrigatória | Comunicado Importante Amil Saúde sobre Covid-19
12. 2,153 - Comunicado Importante da Amil Saúde sobre Covid-19. Leitura Obrigatória
13. 2,113 - Leitura Obrigatória - Comunicado Importante Amil Saúde sobre Coronavírus
14. 2,107 - Coronavirus disease (COVID-19) advice for the public
15. 2,050 -  Corona Virus Reusable Protective Mask for Adult and Kids
16. 1,911 - COVID-19 virus can be transmitted in areas with hot and humid climates
17. 1,837 - Reminder redacted@threatwave.com Coronavirus: Travel advice
18. 1,781 - COVID19 Offer -85%
19. 1,770 - Dealing with the impact of COVID-19
20. 1,237 - Metair prepared for Covid-19
21. 1,098 - Call before visiting your VA facility, Free Veteran resources through PATRIOTlink and Coronavirus updates
22. 1,052 - Coronavirus Is gone...
23. 1,049 - Join us in fight against Coronavirus- Covid-19
24. 1,048 - Breaking!!! COVID-19 Solution Announced by WHO At Last As a total control method is discovered.
25. 9,51 - Prone to COVID-19

## Top Subjects Containing Attachments with Executable Files for Windows Machines (PE/EXEs)

1. 755 - RE: Coronavirus disease (COVID-19) outbreak prevention and cure update.
2. 704 - COVID-19 Supplier Notice
3. 91 - Todays Update on COVID-19
4. 7 - SAFETY COVID-19 (Coronavirus Virus) AWARENESS - Safety Measures
5. 1 - Re: Solution for Corona virus

## Top Countries Sending SPAM - Covid/Coronavirus Contained in Subjects (by Geolocation on SMTP IP Address)

- |              |              |
|--------------|--------------|
| 1. 65,425 US | 14. 3,470 ZA |
| 2. 21,211 IN | 15. 2,248 AR |
| 3. 13,959 RU | 16. 2,172 ES |
| 4. 12,105 DE | 17. 1,455 BD |
| 5. 9,057 FR  | 18. 1,365 ID |
| 6. 7,242 CZ  | 19. 1,267 VN |
| 7. 6,464 CN  | 20. 1,170 UA |
| 8. 5,775 SC  | 21. 1,076 HK |
| 9. 5,741 GB  | 22. 988 AU   |
| 10. 5,184 BR | 23. 973 CL   |
| 11. 4,467 IT | 24. 943 BE   |
| 12. 4,266 CA | 25. 937 KR   |
| 13. 3,815 NL |              |

## COVID-19 Host, Domain, and Mobile App Tracking

*RiskIQ gathers data relating to newly-observed hosts and domains containing COVID-19, COVID19, or Coronavirus in the host or domain name and mobile apps containing COVID-19, COVID19, or Coronavirus in the title or description. A summary of data collected is contained in this section.*

### Domains and Hosts

Domains: 17,774

Hosts: 18,667

Hosts and Domains with Potential Mail Servers: 115

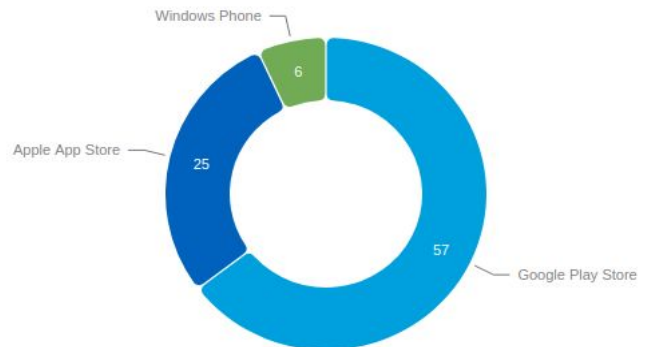
Email-Capable Domains and Hosts: 5,807

Live Hosts and Domains Not Parked: 6,134

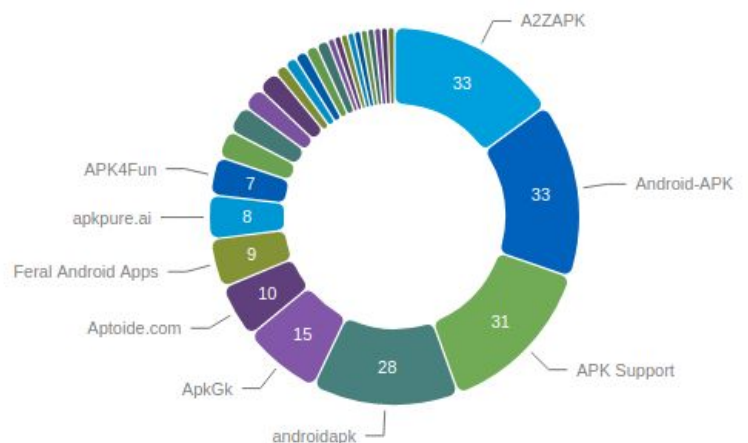
### Mobile Apps

1. Apps in Official Stores: 88 (See Graph)
  - a. Google Play Store: 57
  - b. Apple App Store: 25
  - c. Windows Phone: 6
2. Apps in Secondary/Hybrid Stores: 212 (See Graph)
3. Blacklisted Mobile Apps by Store Type:
  - a. Secondary: 7
  - b. Hybrid: 1

Apps on Official Stores



Apps on Secondary and Hybrid Stores by store



## Consumer Landscape

[Walmart Inc.](#) said on Thursday it would hire more than 150,000 hourly workers in the United States, citing a jump in shoppers due to the coronavirus pandemic. This follows previously reported moves by Amazon.com Inc. announcing it would hire 100,000 warehouse and delivery workers in the United States as the virus outbreak boosts online orders. Walmart also said it plans to pay a special cash bonus of \$300 to full-time hourly workers and \$150 to part-time associates.

[Sabre Corp.](#), a travel technology company based in Southlake, Texas is temporarily cutting pay and stopping 401(k) contributions as the travel industry grapples with the fallout of the coronavirus. The majority of US employees are seeing their base pay reduced by less than 20 percent, while more senior people are seeing their pay reduced by at least 20 percent, if not more. Hourly employees are not affected by this move that's slated to be in effect until the end of June.

America has a large supply of food but distributing it to meet a surge in demand caused by COVID-19 is now the challenge, according to the [Wall Street Journal](#). Companies that supply meat, vegetables and other staples are struggling to redirect the nation's sprawling food supply chain to keep grocers stocked. Meanwhile, farm giants shift schedules and juggle operations to redirect supply chains and meet demand, while increasing overtime and readying part-time workers to fill in for any employees who fall ill.

The [British Government](#) requested firms including Rolls-Royce, Airbus, Jaguar Land Rover, Vauxhall and others to switch their assembly lines to the production of ventilators. The request comes as London faces the prospect of waves of COVID-19 patients struggling to breathe will soon overwhelm its hospitals.

Texas adds to the growing number of states shutting down public gatherings. [Texas Governor Greg Abbott](#) on Thursday issued broad restrictions to limit the spread of the coronavirus, banning public gatherings of more than 10 people and shuttering restaurant dining rooms, bars, gyms and schools across the state. The executive order takes effect midnight Friday and ends midnight April 3, but could be extended.

California Governor Gavin Newsom's shelter-in-place order will halt construction of [SoFi Stadium](#) in Los Angeles since the construction workers do not fall within the scope of essential services. While the completion of SoFi Stadium means little in relation to the issues with which the nation is currently dealing, the delay will likely have a significant economic impact on the state.

## Facts and Figures at a Glance

***Note: As of 03/17/2020 data will be derived from Johns Hopkins University.***

### Global

Total Cases: 246,276  
Total Fatalities: 10,038  
Countries w/ Confirmed Cases: 163

### US

Total Cases: 16,018  
Total Fatalities: 205 (74 of which in Washington State)  
Jurisdictions Reporting Cases: 54 (50 states, District of Columbia, Puerto Rico, Guam, and US Virgin Islands)

*Note: According to the White House press briefing on 03/19/2020, 50% of all COVID-19 cases are located in ten counties from three states.*

## Highest COVID-19 Case Count - US

### States

1. New York: 7,102
2. Washington State: 1,377
3. California: 1,048

### Counties

1. New York City (NY): 4,408
2. Westchester County (NY): 1,091
3. Nassau County (NY): 754
4. King County (WA): 693
5. Suffolk County (NY): 371
6. Snohomish County (WA): 348
7. Los Angeles County (CA): 291
8. Cook County (IL): 278
9. Santa Clara County (CA): 189
10. Wayne County (MI) & Middlesex County (MA): 119

## Virus Distribution Data

### Newly-Impacted Regions

#### Global

- Kyrgyzstan
- Djibouti
- Barbados
- Montserrat
- Mauritius
- Zambia
- Gambia

### Case Totals Near Major Cities

#### Bay Area, CA, US

- San Francisco County
  - Confirmed: 76
  - Deaths: 0
- San Mateo County
  - Confirmed: 100
  - Deaths: 1
- Santa Clara County
  - Confirmed: 189
  - Deaths: 6
- Contra Costa
  - Confirmed: 42
  - Deaths: 1
- Alameda County
  - Confirmed: 35
  - Deaths: 0
- Sonoma County
  - Confirmed: 11
  - Deaths: 0
- Solano County
  - Confirmed: 10
  - Deaths: 0
- Marin County
  - Confirmed: 25

■ Deaths: 0

#### Boston Metro Area, MA, US

- Suffolk County
  - Confirmed: 72
  - Deaths: 1
- Middlesex
  - Confirmed: 119
  - Deaths: 0
- Norfolk
  - Confirmed: 52
  - Deaths: 0
- Berkshire
  - Confirmed: 18
  - Deaths: 0
- Worcester
  - Confirmed: 14
  - Deaths: 0
- Essex
  - Confirmed: 19
  - Deaths: 0

#### Chicago Metro Area, IL, US

- Cook County/Chicago

- Confirmed: 278
- Deaths: 2
- Kane County
  - Confirmed: 6
  - Deaths: 0
- McHenry County
  - Confirmed: 6
  - Deaths: 0
- Lake County
  - Confirmed: 37
  - Deaths: 0
- Dupage County
  - Confirmed: 54
  - Deaths: 0

#### Greater Los Angeles, CA, US

- Los Angeles County
  - Confirmed: 291
  - Deaths: 2
- Orange County
  - Confirmed: 53
  - Deaths: 0
- Riverside County
  - Confirmed: 22
  - Deaths: 3
- Ventura County:
  - Confirmed: 17
  - Deaths: 0

#### NYC Metro Area, NY, US

- New York City
  - Confirmed: 4,408
  - Deaths: 26
- Hudson County, NJ
  - Confirmed: 55
  - Deaths: 1
- Nassau County
  - Confirmed: 754
  - Deaths: 4
- Westchester County
  - Confirmed: 1,091
  - Deaths: 0

- Rockland County
  - Confirmed: 101
  - Deaths: 1
- Suffolk County
  - Confirmed: 371
  - Deaths: 3
- Bergen County, NJ
  - Confirmed: 195
  - Deaths: 2

#### Washington D.C. Metro Area, US

- Washington D.C.
  - Confirmed: 72
  - Deaths: 0
- Loudoun County, VA
  - Confirmed: 5
  - Deaths: 0
- Fairfax County, VA
  - Confirmed: 16
  - Deaths: 0
- Charles County, MD
  - Confirmed: 2
  - Deaths: 0
- Arlington County, VA
  - Confirmed: 17
  - Deaths: 0
- Maryland, US
  - Confirmed: 108
  - Deaths: 1
- Virginia, US
  - Confirmed: 94
  - Deaths: 2

#### London, UK

- Confirmed:
  - UK: 3,269
    - London: 1,221
- Deaths:
  - UK: 144
    - London: *Data Unavailable*

## Active States of Emergency

WA	02/29/2020	CO	03/10/2020	MO	03/13/2020
FL	03/01/2020	CT	03/10/2020	AL	03/13/2020
CA	03/04/2020	MA	03/10/2020	NH	03/13/2020
HI	03/04/2020	MI	03/10/2020	SC	03/13/2020
MD	03/05/2020	NM	03/11/2020	ID	03/13/2020
IN	03/06/2020	AZ	03/11/2020	NE	03/13/2020
KY	03/06/2020	AK	03/11/2020	MN	03/13/2020
UT	03/06/2020	LA	03/11/2020	GA	03/13/2020
PA	03/06/2020	AR	03/11/2020	TX	03/13/2020
NY	03/07/2020	D.C.	03/11/2020	MS	03/14/2020
OR	03/08/2020	TN	03/12/2020	VT	03/14/2020
IA	03/09/2020	VA	03/12/2020	SD	03/13/2020
IL	03/09/2020	KS	03/12/2020	ND	03/13/2020
NJ	03/09/2020	DE	03/12/2020	WY	03/13/2020
OH	03/09/2020	MT	03/12/2020	OK	03/15/2020
RI	03/09/2020	NV	03/12/2020	ME	03/15/2020
NC	03/10/2020	WI	03/12/2020	WV	03/16/2020

## Governmental Guidance

### CDC

- The CDC has issued risk assessments for impacted areas, where Tier 1 is the lowest risk and Tier 4 is the highest risk:
  - Tier 4 (Widespread sustained transmission and restrictions on entry to the United States):
    - China
    - Iran
    - Most European Countries
    - United Kingdom and Ireland
  - Tier 3 (Widespread sustained transmission):
    - South Korea
    - Malaysia
  - Tier 2 (Sustained community transmission):
    - Global
  - Tier 1 (Risk of limited community transmission):

### WHO

World Health Organization has published information on preparing your workplace for COVID-19:

This document gives advice on:

1. Simple ways to prevent the spread of COVID-19 in your workplace
2. How to manage COVID-19 risks when organizing meetings & events
3. Things to consider when you and your employees travel
4. Getting your workplace ready in case COVID-19 arrives in your community

For further information see:

[www.who.int/docs/default-source/coronaviruse/getting-workplace-ready-for-covid-19.pdf?sfvrsn=359a81e7\\_6](http://www.who.int/docs/default-source/coronaviruse/getting-workplace-ready-for-covid-19.pdf?sfvrsn=359a81e7_6)

## Department of State

- The State Department issued travel advisories according to the following levels:
  - Level 4 - Do not travel:
    - Global as of 03/19/2020
  - Level 3 - Reconsider travel
  - Level 2 - Exercise increased caution
  - Level 1 - Exercise normal precautions

Prior to any travel outside the United States, the State Department recommends checking its website for COVID-19-specific travel advisories [here](#).

## State & Local Governments

### California

As of 03/20/2020, California has 1,039 confirmed COVID-19 cases and 19 deaths. California [projects](#) 56 percent of the state's population (25.5 million people) will be infected with COVID-19 over an eight-week period. Governor Gavin Newsom sent a [letter](#) to the Trump administration, asking to deploy the USNS Mercy hospital ship to the port of Los Angeles until September of this year, in order to decompress the current healthcare delivery system in the Los Angeles region.

### Illinois

As of 03/20/2020, Illinois has 423 confirmed cases of COVID-19 and four deaths. Chicago Mayor Lori Lightfoot [announced](#) she will keep Chicago Public Schools closed until April 20, extending Governor J.B. Pritzker's original closure through March 27. Mayor Lightfoot ordered Chicago's City Hall closed to the public until further notice, effective Friday. The building will stay open for essential personnel, aldermen and working journalists under the order.

### Massachusetts

As of 03/19/2020, Massachusetts has 328 confirmed cases of COVID-19, and just [reported](#) its first novel coronavirus-related death (in Suffolk County). The man was in his 80s and in the hospital with pre-existing health conditions.

## New York

As of 03/20/2020, New York has 5,715 confirmed COVID-19 cases and 38 deaths. Governor Andrew Cuomo [announced](#) Friday that 100 percent of non-essential work forces are now required to stay home. Non-compliance by businesses may result in fines or summonses. Gov. Cuomo also said he was canceling non-critical elective surgeries statewide as of next week to help expand hospital capacity.

## Washington D.C.

As of 03/20/2020, the Washington D.C.-region has a total of 274 confirmed COVID-19 cases—94 in Virginia, 108 in Maryland, and 72 in the District. D.C. Metro. Maryland transportation officials [announced](#) the closure of all Motor Vehicle Administration branch offices effective at 4:30 p.m. Friday, until further notice. Virginia and D.C. motor vehicle services closed earlier this week.

## Publicly-Available Company Policies

*Note: New additions are highlighted in blue.*

### Office Closures

- **Carta:** All offices closed until 03/31.
- **Confluent:** All offices closed, globally.
- **Fastly:** Closing all offices, including San Francisco.
- **Gap:** Corporate office in New York closed due to COVID-19 positive test in that office.
- **GoCardless:** All offices closed until further notice.
- **Grammarly:** San Francisco, New York, and Vancouver employees mandated to work from home; Kyiv employees encouraged to work from home.
- **Nike:** European HQ.
- **Masterclass:** Los Angeles & San Francisco offices working from home.
- **Moz:** Closing Seattle and Vancouver offices until 03/19.
- **OKCoin:** Mandated to work from home in San Francisco and Malta locations effectively.
- **OTICON:** Closed down Danish headquarters and asked employees to work remotely.
- **PhRMA:** Closed DC headquarters.
- **United Airlines:** Offering employees up to 6 months unpaid leave.

### Remote Work/Interviews

- **23andMe:** Encouraging work from home; empowering employees to work from home based on their own situation (response to school closures, sick household members, etc.).
- **Adobe:** Asking Seattle and Bay Area employees to work from home through 03/23.
- **ADP:** Enabling work from home capabilities.
- **Airbnb:** San Francisco employees encouraged to work from home and no approval needed. Seattle office closed.
- **Amazon:** All onsite candidate interviews moving to video.
- **Autodesk:** Encouraging work from home.
- **Boeing:** Encouraging Seattle-area employees to work from home.
- **Bullhorn:** "Suspended" handshakes, a switch to Zoom meetings whenever possible, and implemented an external visitor process that sees their policy communicated to visitors 24 hours before a meeting, encouraging cancellation or online meetings where symptoms may be experienced. No office closures at this time.
- **Box:** Work from home for all locations.
- **ButcherBox:** Mandatory work from home starting 03/16.
- **Catalyst:** Work from home (New York) on a week-by-week basis.

- **Cloudera:** Suspended all non-essential travel and mandated work from home for all employees, globally. Onboarding to be done virtually. Restricted all travel to China, Bangalore, Iran, Hong Kong, Japan, Italy, and South Korea. Restricting visitor access in all our offices to business critical meetings only. Suspending meal services in all offices globally. Interviews with candidates via videoconferencing.
- **Coinbase:** Optional work from home starting 03/09, also providing \$250 stipend per employee for video conferencing equipment.
- **Confluent:** Requiring work from home globally; all interviews transitioning to remote.
- **Dialpad:** All employees are required to work from home.
- **DNAexus:** All employees strongly encouraged to work from home from both San Francisco and Mountain View offices.
- **Docusign:** Requiring remote work.
- **Dolby:** Option to work remote.
- **Drift:** Work from home required across all offices (Boston, San Francisco, Tampa and Seattle). Reassessing every Friday.
- **eCarta:** Work from home, Seattle and San Francisco offices shut down.
- **Elastic:** Mandatory work from home.
- **Eli Lilly and Co:** Encouraging all US employees to work from home if possible.
- **Ellucian:** Candidate interview travel has been suspended for 45 days; opting to utilize video interviewing instead. All candidates have a choice to either come into office or opt for a video interview.
- **Expedia:** Encouraging Seattle employees to work from home.
- **Facebook:** Moving to all video interviews to restrict visits to physical offices, asked all Bay Area employees to work from home through March.
- **Federal Reserve Bank of Chicago:** Non-critical employees asked to work remotely for 2 weeks (starting 03/12) then reevaluate.
- **Glassdoor:** All employees asked to work from home until further notice (same parent company as Indeed).
- **Grammarly:** San Francisco, New York, and Vancouver employees mandated to work from home; Kyiv employees encouraged to work from home; conducting all candidate interviews by video.
- **Genie:** Work from home, Redmond Office.
- **Google:** Asking all North American employees to work from home until 04/10.
- **Handshake:** Encouraging all employees to work from home 03/09 to 03/20 (reviewed weekly to determine if they extend).
- **HelloBetter.de:** Instituted work from home for all global employees.
- **Hometree.co.uk:** Running work from home mandatory policy until further government advice for all employees.
- **Houzz:** Work from home in Bay Area, but offices will still be open for those who want to work in office. Will be monitored on a week-to-week basis.
- **Indeed:** All employees requested to work from home (same parent company as Glassdoor) -- possibly for the whole year.

- **Intel:** Recommending employees work from home.
- **Internxt:** All employees are encouraged to work from home.
- **JP Morgan:** Managers requested that about 10% of staff across its consumer bank work remotely as part of the plan's resiliency testing.
- **LA Times:** Restricting employee travel and encouraging work from home.
- **LinkedIn:** Bay Area employees asked to work from home through March.
- **Lyft:** San Francisco and Seattle employees encouraged to work from home.
- **OKCoin:** Allowing employees to work from home. Preparing for mandatory work from home should situations change near office locations.
- **Okta:** Directed Bellevue, San Francisco, San Jose, London, Paris, Amsterdam employees to work from home.
- **PolicyGenius:** Optional work from home.
- **Pure Storage:** Work from home, Seattle / Bellevue, Mountain View.
- **Mattermost:** Majority of staff is remote, recommend work from home for San Francisco.
- **Microsoft:** Allowing San Francisco/Seattle employees to work from home through March 9th.
  - Official Microsoft guidance.
  - LinkedIn tells Bay Area employees to work from home through March, if possible, and is also asking employees to postpone all non-essential business travel and will not participate in external events in March and April.
- **Mozilla:** Strongly recommending work from home for all employees until 03/27. Non-essential travel cancelled until further notice.
- **Nextdoor:** All global employees strongly encouraged to work from home; all interviews are to be conducted remotely.
- **Nordstrom:** Encouraging employees to work from home if they can.
- **PolicyGenius:** Optional work from home.
- **Reflektive:** All domestic and international travel on hold, no visitors in offices, supporting work from home, all interviews done remotely. Reassessing every weekend.
- **REI:** Seattle, work from home.
- **Salesforce:** Encouraging Seattle Salesforce/Tableau employees to work from home through March. Strongly encouraging all employees across California and New York to work remotely for the month of March.
- **Securities and Exchange Commission (SEC):** Asked DC employees to telework.
- **Sisense:** Highly encouraged work from home for all locations.
- **Spotify:** New York employees asked to work remotely through March.
- **Square:** Suspended visitors and certain teams being encouraged to work from home in Seattle, San Francisco, Dublin, Ireland, and London.
- **StayingHomeClub:** A running list of tech companies work from home/travel/conference plans.
- **Stride:** Work from home is strongly encouraged in San Francisco (only office location), but the office will still be open for those who want to work in office. Will be monitored on a daily/weekly basis.

- **Stripe:** Encouraging/requiring work from home, suspending visitors, video interviews.
- **SurveyMonkey:** Allowing employees flexibility to work from home through 03/20.
- **Textio:** Encouraging remote work and suspending travel.
- **Thrive Digital:** Team members recommended to work from home until 03/31; however, the office remains open (for now). In-person interviews have been rescheduled to video calls. Non-team member office visitors are restricted.
- **TMobile:** Work from home, Seattle/Bellevue.
- **Twitter:** Encouraging all employees who are able to work from home, video interviews.
- **VSCO:** Offering optional work from home, no social visitors, video interviews.
- **WalkMe:** All employees have been notified that they can work from home if they feel more secure. Currently, the offices are open. A full day of remote work is implied in the Tel Aviv office to test the systems on Sunday (work day).
- **Washington Post:** Asking employees to work from home.
- **WSurveyMonkey:** Allowing employees flexibility to work from home through 03/20.
- **XWiki:** Fully remote until further notice.

## Travel Restrictions

- **23andMe:** Banned travel to affected areas as listed by CDC and instructed employees to only attend critical conferences.
- **ADP:** All non-essential business travel is limited.
- **Amazon:** All non-essential travel (including all onsite candidate interviews, now going to video).
- **Aptiv:** All travel (currently through end of March).
- **Atlassian:** Restricting to only high-business impact travel.
- **Audley Travel:** All inter-office travel; only essential familiarization trips to non-categorised areas.
- **Automattic:** Pausing all business travel and discouraging personal travel.
- **Bottomline Technologies:** All non-essential travel (including all onsite candidate interviews now going to video).
- **Bullhorn:** Maintaining a list of regions where travel is banned and restrictions on all cross-border travel without authorization.
- **Cargill:** Suspending all non-essential business travel.
- **Cloudera:** Suspended all non-essential travel and mandated work from home for all employees, globally.
- **Comparably:** Suspended all non-essential travel and mandated work from home for all employees.
- **Confluent:** Suspending all non-essential travel. Implementing "no questions asked" opt-out for essential travel.
- **CVSHealth/Aetna:** Suspending travel until May.

- **DNAexus:** Restricted all travel unless reviewed and approved by C-Level.
- **Dolby:** All company travel restricted.
- **Drift:** All company travel restricted.
- **Ellucian:** Suspending all internal employee travel for 45 days; employees are able to opt-out of any and all customer travel.
- **Ford:** Restricting all global travel until 03/27.
- **GitHub:** All non-essential travel.
- **Gitlab:** Restricted all non-essential, cross-border travel.
- **GoCardless:** All business travel until the end of April.
- **Google:** All international travel.
- **Grammarly:** Pausing all business travel and discouraging personal travel.
- **Handshake:** Travel only for key business priorities.
- **Harvard University:** Restricting travel through 04/20.
- **Havas:** Per an internal memo issued by CEO Yannick Bolloré, business travel to areas including South East Asia, Milan and Venice is suspended. Employees coming back from a business trip in those areas have to work from home for 14 days.
- **HelloBetter.de:** Banned international travel.
- **IBM:** Suspending travel for internal meetings, external events with 1,000+ attendees, non-critical international travel.
- **inFeedo:** Pausing all non-essential travel.
- **Intel:** All Travel and Conferences attendance or meetings with people you can't track where they came from.
- **JP Morgan Chase:** Restricting non-essential global and domestic travel.
- **LA Times:** Restricting employee travel and encouraging work from home.
- **L'Oreal:** Suspending business travel through March.
- **Mattermost:** Strongly discouraging international business travel and non-essential local travel.
- **Nestle:** Restricting international business travel until mid-March.
- **Nike:** Partial restrictions.
- **OKCoin:** Suspended all business travel until further notice; discouraging personal travel.
- **Okta:** Restricting non-essential travel.
- **Paycor:** All non-essential travel (including candidate travel).
- **Shoppable:** All non-essential travel.
- **Salesforce:** All non-essential travel.
- **Sisense:** Suspended all non-essential travel, supporting employee requests for travel avoidance.
- **Slack:** Strongly encouraging all employees to work from home through the end of March. Tokyo & Osaka offices closed.
- **Square:** Pausing all business travel and discouraging personal travel.
- **Stanford University:** Moves all classes online for the remainder of winter quarter.

- **Stride:** Pausing all business travel; self-quarantine (14 days) after personal international/domestic travel case-by-case depending on where they are coming from.
- **Stripe:** Paused global business travel.
- **Tenable:** Onboarding of new members is now online only.
- **Textio:** Encouraging remote work and suspending travel.
- **Thrive Digital:** All business and conference travel is temporarily restricted. Team member travel is not restricted, but those returning from breakout zones will be required to work from home for a period of 14 days.
- **Twitter:** All non-essential travel (including candidate travel).
- **Unilever:** Restricted to “business-critical” travel.
- **Vertiv:** International and domestic trips restricted.
- **VSCO:** Paused international travel and non-essential domestic travel.
- **WalkMe:** All non-essential business travel is limited, including candidates and international travel.
- **World Bank/IMF:** Moving spring meetings to virtual.

## School Closures Near Major Cities

*Note: EoS stands for End of Semester*

### Bay Area School Districts and Colleges

*Note: Due to large number of school closures see [here](#) for additional closings.*

**All San Francisco Public Schools (SFUSD) are closed until April 3.**

### Boston Metro Area School Districts and Colleges

*Note: Due to large number of school closures see [here](#) for additional closings.*

**All Boston public and private primary and secondary schools are closed until April 7.**

### Chicago Metro Area School Districts and Colleges

*Note: Due to large number of school closures see [here](#) for additional closings.*

**All Illinois K-12 schools are closed until March 27.**

**All Chicago Public Schools are closed until April 20.**

### D.C. Metro Area School Districts and Colleges

*Note: Due to large number of school closures see [here](#) for additional closings.*

**All District of Columbia Public Schools are closed until March 31.**

**All Virginia K-12 schools are closed until March 27.**

**All Maryland K-12 schools are closed until March 27.**

### Greater Los Angeles School Districts and Colleges

*Note: Due to large number of school closures see [here](#) for additional closings.*

## NYC Metro Area School Districts and Colleges

*Note: Due to large number of school closures see [here](#) for additional closings.*

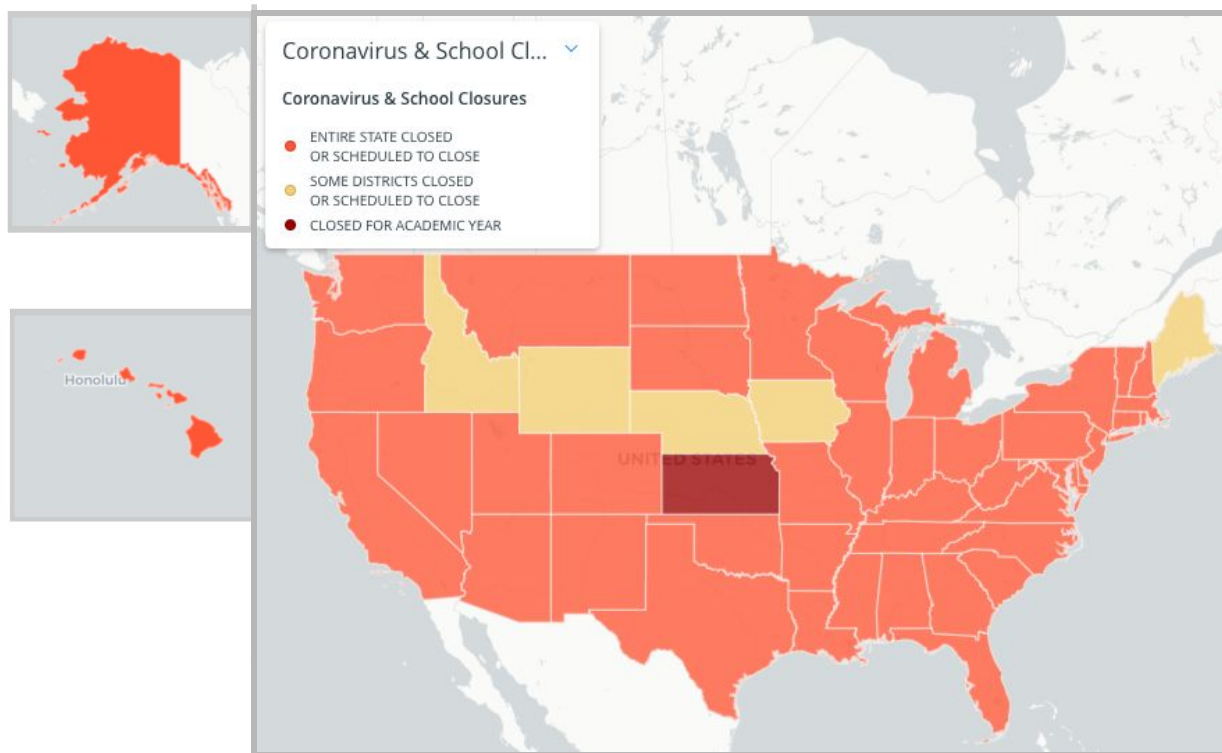
**All New York City public schools are closed until April 20.**

## London, UK School Districts and Colleges

*Note: To check for local school closures in the UK see [here](#).*

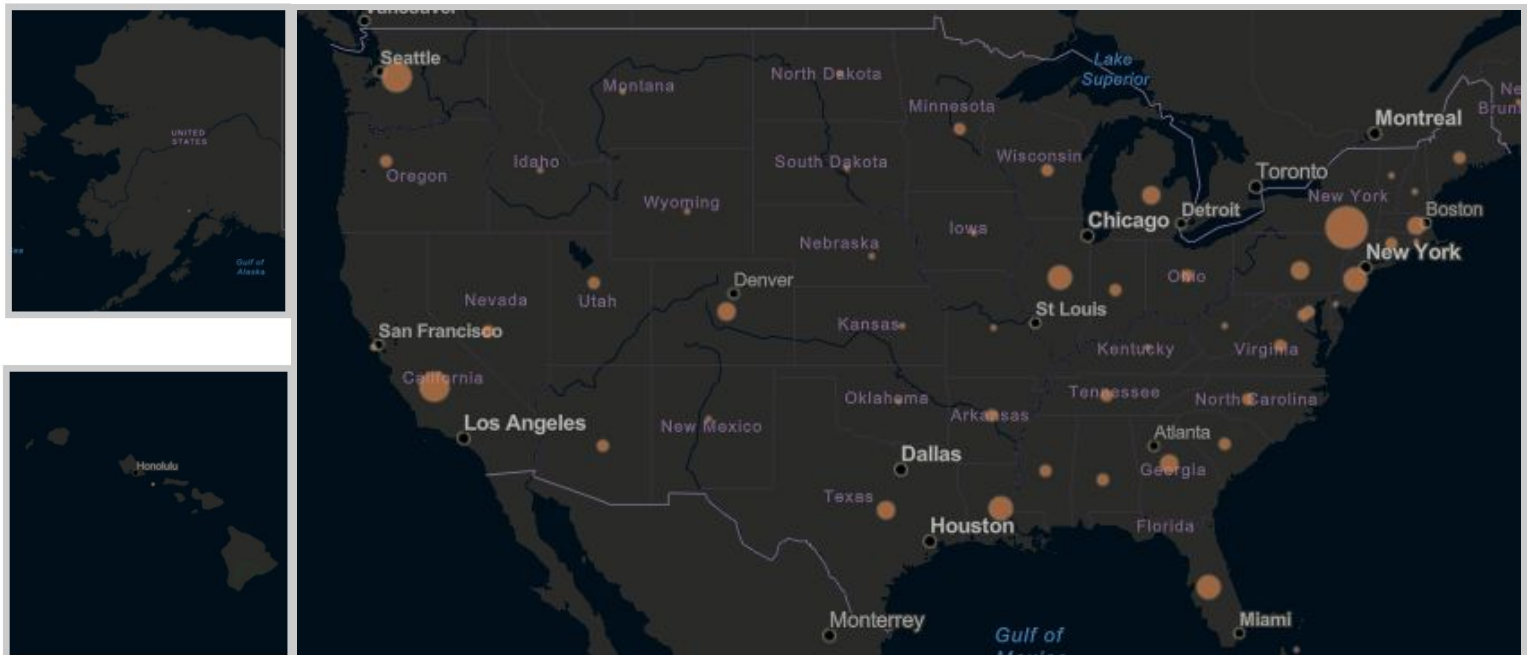
**All schools in England and Northern Ireland are closed from 03/20 until further notice.**

## Map of Active School Closures - US



Source: [www.edweek.org/ew/section/multimedia/map-coronavirus-and-school-closures.html](http://www.edweek.org/ew/section/multimedia/map-coronavirus-and-school-closures.html)

## Map of Active Reported Cases - US



Source: <https://www.arcgis.com/apps/opstdashboard/index.html#/bda7594740fd40299423467b48e9ecf6>

## Map of Active Reported Cases - Global



Source: <https://www.arcgis.com/apps/opsdashboard/index.html#/bda7594740fd40299423467b48e9ecf6>

## End Report