



RiskIQ i3:

COVID-19 Daily Update

03/21/2020

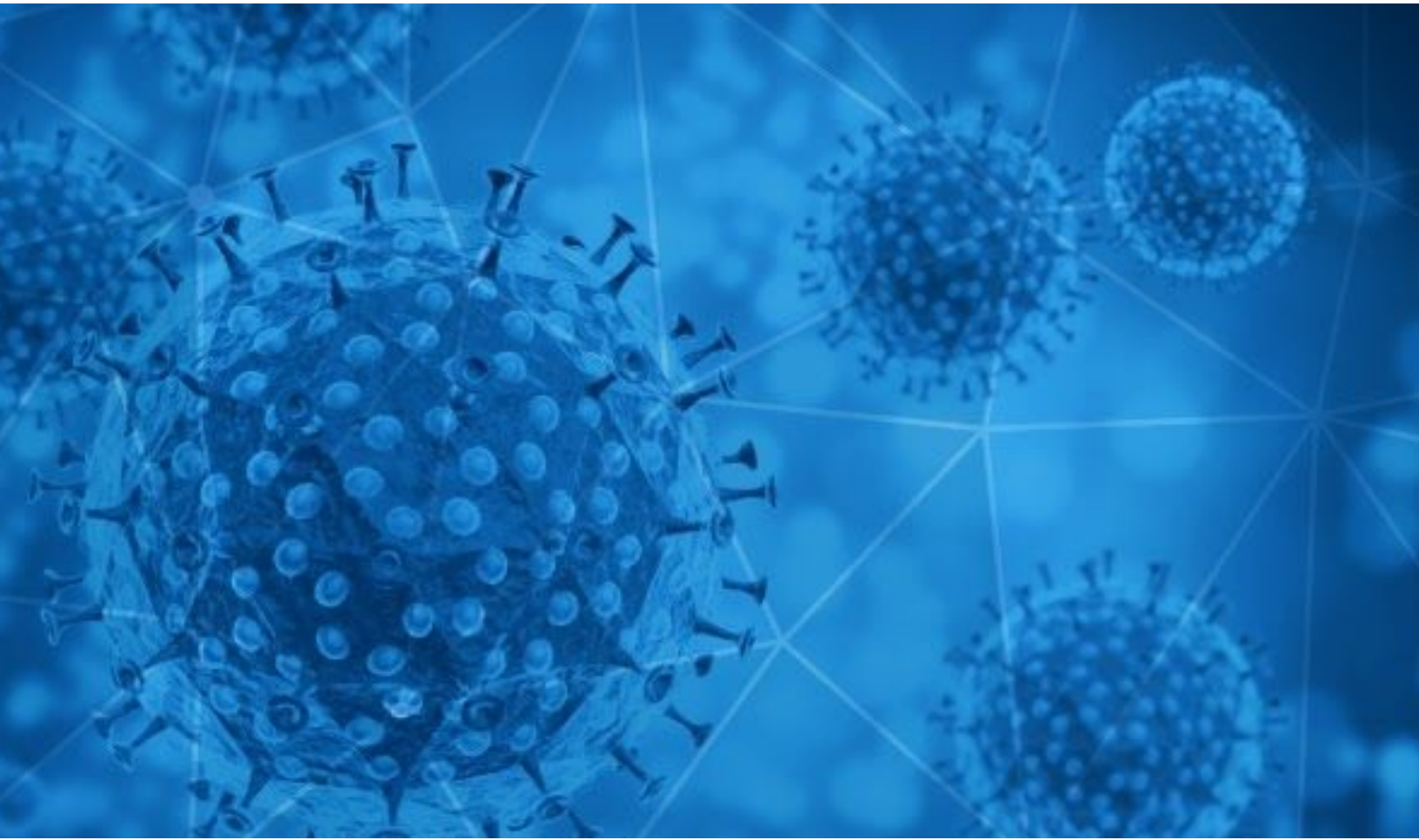


Table of Contents

Methodology	3
Disclaimer	3
Notable Events: Previous 24 Hours	4
Digital Exploitation	6
Blacklist Data	6
COVID-19 Email Spam Statistics	7
COVID-19 Host, Domain, and Mobile App Tracking	10
Consumer Landscape	11
Facts and Figures at a Glance	13
Global	13
US	13
Highest COVID-19 Case Count - US	13
Virus Distribution Data	14
Newly-Impacted Regions	14
Case Totals Near Major Cities	14
Active States of Emergency	16
Governmental Guidance	17
CDC	17
WHO	17
Department of State	18
State & Local Governments	18
Publicly Available Company Policies	20
Office Closures	20
Remote Work/Interviews	20
Travel Restrictions	23
School Closures Near Major Cities	26
Map of Active School Closures - US	28
Map of Active Reported Cases - US	29
Map of Active Reported Cases - Global	30

Methodology

The information provided in this report is limited to open source and publicly available data discovered through standard, commonly known browsing techniques and keyword searches. To provide efficient results, RiskIQ may use websites that require payment in exchange for aggregation of data that is otherwise publicly available without payment and could be obtained by anyone accessing the correct sites or engaging the correct third parties to obtain the information. Information presented in this report is cross-checked against multiple sources for full verification; however, some assessments and conclusions are based on incomplete information and represent the RiskIQ analyst's judgment based on patterns and data available.

Disclaimer

The information provided in this report is "as-is" and Customer acknowledges and agrees that RiskIQ makes no representation or warranty, express or implied, as to the accuracy or completeness of the information. Customer agrees that RiskIQ shall not have any liability resulting from Customer's use of this information.

Notable Events: Previous 24 Hours

Illinois Governor J.B. Pritzker issued a ["stay-at-home" order](#) for all residents, which begins Saturday, 03/21/2020, at 5:00 p.m. local time. The stay-at-home order will be effective until 04/07/2020. Residents can still go to the grocery stores, put gas in their cars, take walks outside and make pharmacy runs. All local roads, including the interstate highways and tollways, will remain open to traffic. Additionally, the reopening date for schools has been postponed to 04/08/2020. There are now at least [75 million](#) Americans under virtual lockdown following Illinois's stay at home order.

A staffer for Vice President Mike Pence [tested positive](#) for COVID-19 according to Pence's press secretary, Katie Miller. This marks the first positive test for the virus among White House staffers. Miller announced the affected individual did not have close contact with President Trump or Pence and further contact tracing is being completed per CDC guidelines.

The FDA issued an [emergency authorization](#) on the afternoon of 03/21/2020 to diagnostics company Cepheid for its COVID-19 test which can detect the coronavirus and provide results in 45 minutes. This is a rapid molecular test that can be conducted entirely at the point-of-care for patients. [Cepheid](#) will begin shipping its test kits on 03/27/2020.

Administrators at the University of Nebraska Medical Center (UNMC) began procedures to [decontaminate masks](#) so hospital staff can reuse them in the face of a mask shortage. UNMC assistant vice chancellor for health security training and education John Lowe suggested other hospitals in the nation may be taking the same approach based on his conversations with other hospitals. The experimental procedure involves using ultraviolet lights to attempt to sterilize the masks. The decontamination and reuse of masks goes against CDC regulations, but the agency issued new guidance on 03/19/2020 which states it may be necessary for hospitals to decontaminate masks as a last resort.

Three county transportation commissions [suspended express lane tolls](#) on Bay Area freeways around San Francisco through at least April 7 due to a dramatic decline in traffic caused by the shelter-in-place order. In a related move, Bay Area bridges suspended [cash toll collections](#).

Florida Department of Transportation officials announced Thursday, 03/19/2020, they have temporarily [stopped taking cash](#) at Florida Turnpike toll plazas. Tolls will instead be collected through an electronic process.

The [U.S. Air Force evacuated 89 Americans](#) from Honduras following international travel restrictions imposed by the US Department of State.

Hospital administrators warn some hospitals may be unable to handle payroll and some hospitals may be forced to close as they deal with [cash shortages](#). The American Hospital

Association and three hospital CEOs said the federal directive to halt elective procedures is cutting into the most significant source of revenue. Hospitals also claim their ability to buy critical supplies, such as protective gear and hospital beds, is being hurt by private vendors requiring cash payments upon delivery. The American Hospital Association, the American Medical Association and the American Nurses Association are urging lawmakers to provide \$100 million in emergency aid to hospitals and health networks; meanwhile, the Federation of American Hospitals is asking for \$225 million in aid.

The Los Angeles Department of Health Services is [shifting](#) from a strategy of containment to slowing transmission and preventing excess mortality and morbidity. As part of the change, Los Angeles health officials said tests will no longer be administered to suspected cases unless the test could change how treatment is administered.

The Northwest Territories in Canada [banned travel](#) to the province beginning 03/21/2020, though limited exceptions will be made. Exceptions include Northwest Territory residents, law enforcement, health workers, and those transporting essential goods into the territory.

The WHO [issued guidance](#) for individuals under lockdown procedures during the outbreak. Among other points, the WHO recommends individuals avoid alcohol and other sugary drinks, avoid smoking, eat healthy to boost the immune system, and exercise at least thirty minutes a day for adults and an hour a day for children. For exercise, WHO officials recommend individuals who can go outside go for walks, runs, or bike rides while individuals who cannot go outside can dance, do yoga, or walk up and down stairs.

There were 627 COVID-19 deaths in Italy on Friday, 03/20/2020, marking the [highest single-day increase in deaths](#) in the country. The death toll for the hard-hit country now sits at over 4,030; Italy has a total confirmed case count of more than 47,020.

Interpol arrested 121 individuals during an international operation, dubbed [Operation Pangea XIII](#), aimed to counter the illegal online sale of medical supplies and medicine; more than ninety nations took part in the operation. Authorities found over 2,000 online advertisements relating to COVID-19. Interpol said in a statement it seized more than 34,000 counterfeit, unauthorized, and substandard products, including masks and antiviral medications.

Digital Exploitation

Sentinel Labs researchers reported yesterday that they have seen a significant number of [malware campaigns](#), spam campaigns, and scams related to COVID-19. They have identified scams where multiple dark web sites claim to sell COVID-19 supplies (masks, sanitization and cleaning supplies) directly for bitcoin. In reality the scammer collects the money and does not deliver anything. Other bogus sites are claiming to sell non-existent vaccines and charging victims \$5,000. They also observed criminals selling COVID-19 malware/phishing 'kits' for less than \$1,000.

Blacklist Data

[http://dttipgifts\[.\]com/e-transfer/covid-19/files6546541204/down45640/banks/directing/simplii/](http://dttipgifts[.]com/e-transfer/covid-19/files6546541204/down45640/banks/directing/simplii/)

[http://dttipgifts\[.\]com/E-Transfer/COVID-19/files6546541204/down45640/banks/directing/desjardins/](http://dttipgifts[.]com/E-Transfer/COVID-19/files6546541204/down45640/banks/directing/desjardins/)

[http://dttipgifts\[.\]com/E-Transfer/COVID-19/files6546541204/down45640/banks/directing/cibc/](http://dttipgifts[.]com/E-Transfer/COVID-19/files6546541204/down45640/banks/directing/cibc/)

[http://dttipgifts\[.\]com/E-Transfer/COVID-19/files6546541204/down45640/banks/directing/atbonline/](http://dttipgifts[.]com/E-Transfer/COVID-19/files6546541204/down45640/banks/directing/atbonline/)

[http://dttipgifts\[.\]com/E-Transfer/COVID-19/files6546541204/down45640/banks/directing/atbonline/](http://dttipgifts[.]com/E-Transfer/COVID-19/files6546541204/down45640/banks/directing/atbonline/)

[http://dttipgifts\[.\]com/E-Transfer/COVID-19/files6546541204/down45640/banks/directing/desjardins/](http://dttipgifts[.]com/E-Transfer/COVID-19/files6546541204/down45640/banks/directing/desjardins/)

[http://cadastropromocaocovid-19\[.\]ml/](http://cadastropromocaocovid-19[.]ml/)

[http://covid-19-gov\[.\]claims/login.php](http://covid-19-gov[.]claims/login.php)

[http://promocaocovid-19\[.\]ml/](http://promocaocovid-19[.]ml/)

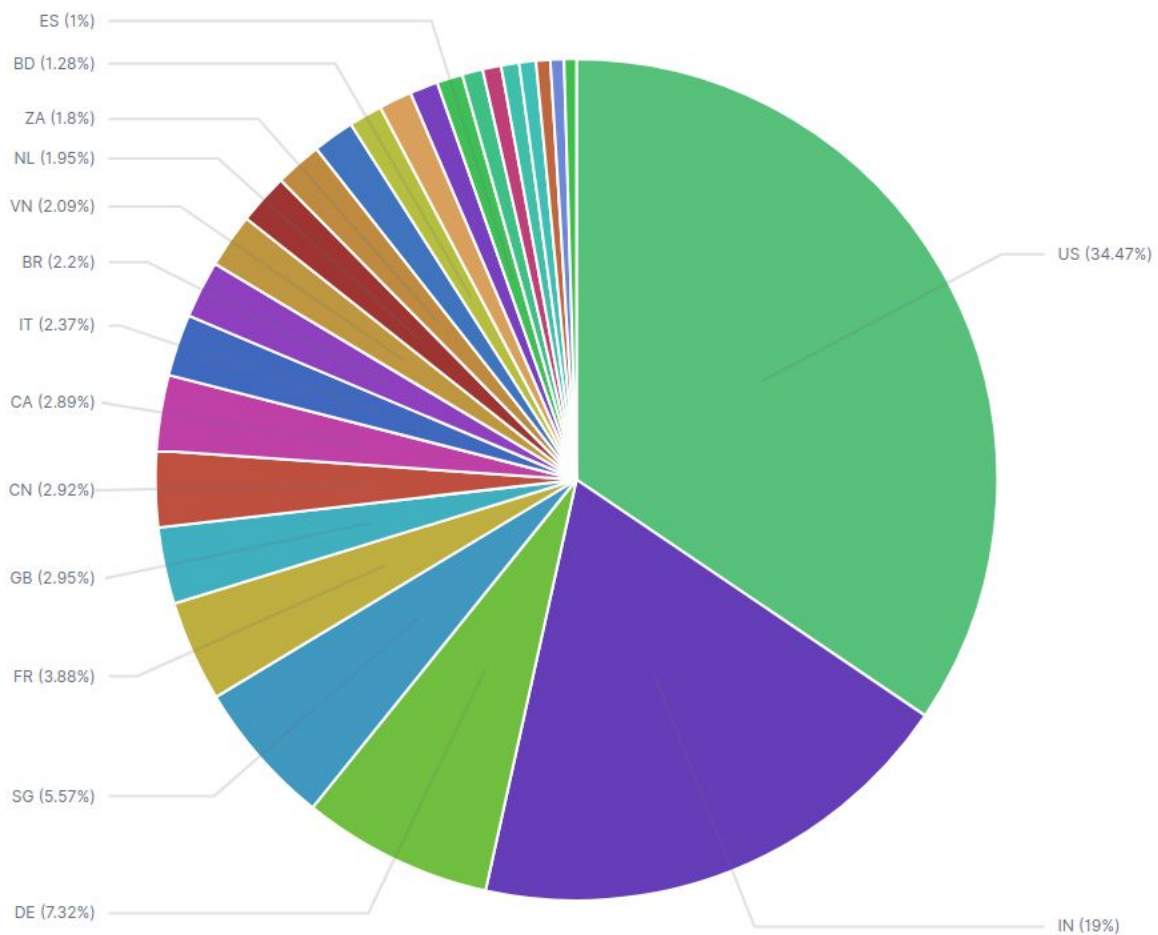
[http://shop--covid-19\[.\]rf\[.\]gd/?ebay.co.uk/](http://shop--covid-19[.]rf[.]gd/?ebay.co.uk/)

[http://karieravmiele\[.\]cz/Covid-19/](http://karieravmiele[.]cz/Covid-19/)

[http://vaccinelocations\[.\]com/](http://vaccinelocations[.]com/)

COVID-19 Email Spam Statistics

RiskIQ analyzed its spam box feed for the time period of 03/20/2020-03/21/2020. During this period, RiskIQ analyzed 193,133 spam emails containing either “*corona*” or “*covid*” in the subject line. There were 39,760 unique subject lines observed during the reporting period. The spam emails originated from 14,127 unique sending email domains and 22,439 unique SMTP IP Addresses. Analysts identified 135 emails which sent an executable file for Windows machines.



Spam emails by country of origin

Top 25 Subjects

1. 10,262 - The Mask that can prevent Coronavirus now
2. 9,184 - WASPADA COVID-19 TANYA YESDOK
3. 6,053 - The 3 plants you need to throw in your shopping cart to fight coronavirus
4. 5,264 - Coronavirus is spreading, this specialized mask can control it
5. 4,869 - Join the fight against Coronavirus
6. 4,241 - Coronavirus disease (COVID-19) advice for the public
7. 2,884 - COVID-19
8. 2,820 - The Corona Letter: A fight to avoid Stage 3
9. 2,761 - Get Your Household Ready for Coronavirus disease (COVID-19)
10. 2,550 - Healthcare Systems Preparedness for Coronavirus Disease (COVID-19)
11. 2,510 - COVID-19 no worries...Work From Home is BEST for YOU!
12. 1,908 - Coronavirus Disease (COVID-19) advice for the public
13. 1,783 - ✓ Corona Virus Reusable Protective Mask for Adult and Kids
14. 1,742 - Forget a vaccine for corona
15. 1,216 - CoronaVirus: FG Orders Closure of All Schools Nationwide + JAMB Adjusts Exam Dates
16. 1,163 - DStv COVID-19 update. What we are doing to help
17. 1,143 - CÙNG MB NÓI KHÔNG VỚI COVID-19
18. 1,132 - RECOVERY AND PREVENTABLE HEALTH TIPS ON COVID 19
19. 1,056 - Watch out for Coronavirus scams
20. 997 - COVID19 Offer -85%
21. 978 - IntraMuros - Comment communiquer sur le COVID-19 ?
22. 941 - Installation des conseils municipaux et coronavirus : quelles mesures adopter ?
23. 898 - How we're dealing with Covid-19 to keep you safe
24. 827 - Get Your Household Ready for Coronavirus Disease (COVID-19)
25. 759 - Test Rápido ALLTEST para COVID-19

Top Subjects Containing Attachments with Executable Files for Windows Machines (PE/EXEs)

1. 110 - RE: Due to outbreak ofCoronavirus
2. 17 - What can you expect from Laitram Machinery COVID19 FYI ATTACHED
3. 8 - SAFETY COVID-19 (Coronavirus Virus) AWARENESS - Safety Measures

Top Countries Sending SPAM - Covid/Coronavirus Contained in Subjects (by Geolocation on SMTP IP Address)

- | | |
|--------------|--------------|
| 1. 59,286 US | 14. 2,754 VE |
| 2. 32,690 IN | 15. 2,207 BD |
| 3. 12,592 DE | 16. 2,181 RU |
| 4. 9,593 SG | 17. 1,857 SC |
| 5. 6,681 FR | 18. 1,715 ES |
| 6. 5,068 GB | 19. 1,360 BE |
| 7. 5,033 CN | 20. 1,230 ID |
| 8. 4,976 CA | 21. 1,183 NO |
| 9. 4,081 IT | 22. 1,106 AR |
| 10. 3,775 BR | 23. 942 IE |
| 11. 3,591 VN | 24. 894 UA |
| 12. 3,351 NL | 25. 810 AU |
| 13. 3,090 ZA | |

COVID-19 Host, Domain, and Mobile App Tracking

RiskIQ gathers data relating to newly-observed hosts and domains containing COVID-19, COVID19, or Coronavirus in the host or domain name and mobile apps containing COVID-19, COVID19, or Coronavirus in the title or description. A summary of data collected is contained in this section.

Domains and Hosts

Domains: 19,073

Hosts: 20,002

Hosts and Domains with Potential Mail Servers: 122

Email-Capable Domains and Hosts: 6,171

Live Hosts and Domains Not Parked: 7,743

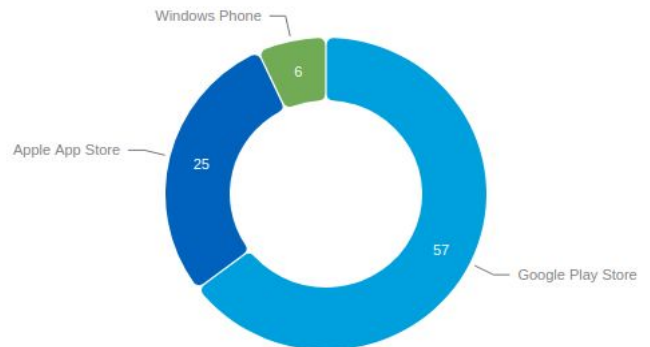
Mobile Apps

1. Apps in Official Stores: 88 (See Graph)
 - a. Google Play Store: 57
 - b. Apple App Store: 25
 - c. Windows Phone: 6

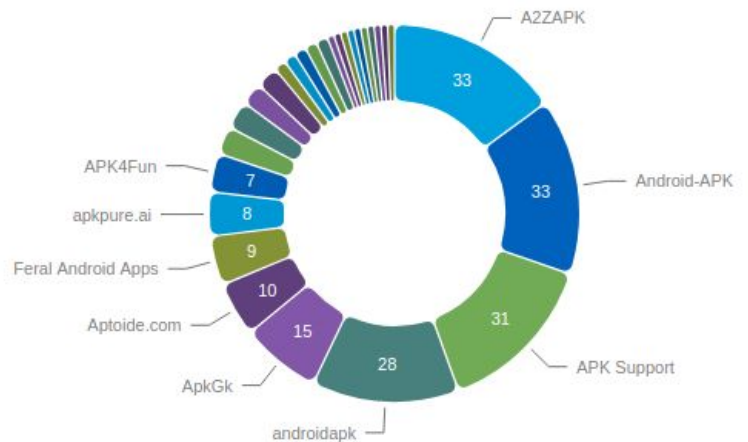
2. Apps in Secondary/Hybrid Stores: 212 (See Graph)

3. Blacklisted Mobile Apps by Store Type:
 - a. Secondary: 7
 - b. Hybrid: 1

Apps on Official Stores



Apps on Secondary and Hybrid Stores by store



Consumer Landscape

A panel of economists surveyed by [The Wall Street Journal](#) projected 875,000 new jobless claims would be filed for the week ending Saturday, 03/21/2020. State-level anecdotes suggest applications for unemployment benefits—a proxy for layoffs—could hit more than 2 million in next Thursday's Labor Department report. Related, [United Airlines](#) CEO threatens big job cuts if the company doesn't receive "sufficient government support by the end of March."

Federal regulators, through the mortgage giants Fannie Mae and Freddie Mac, ordered [lenders to offer homeowners flexibility](#), in order to ease the burden on people who have suffered a loss of income. The move covers about half of all home loans in the US—those guaranteed by Fannie and Freddie. But regulators expect the entire mortgage industry will quickly adopt a similar policy.

The Chicago Sun-Times reported instances of community members [delivering care packages](#) for seniors, cooking meals for laid-off workers and neighbors, and, more broadly, community groups and individuals lending a hand as the outbreak brings the city to a halt.

Some [delivery employees](#) are reportedly going to work sick out of fear of losing their jobs, according to a New York Times report. Despite this, public health experts said the odds were relatively low that ill warehouse workers or truck drivers would infect the recipients of packages, in part because the virus does not survive on cardboard surfaces for very long.

[Tesla and SpaceX CEO Elon Musk](#) told CleanTechnica that his companies had 250,000 N95 masks which would be distributed to hospitals by the evening of 03/22/2020. He said his companies should have over 1,000 ventilators by next week.

[Connecticut Governor Ned Lamont](#) on Friday ordered non-essential businesses to either close until the crisis passes or allow their employees to work from home. Lamont said the order generally extends to all businesses that aren't supplying food, gasoline, or medical supplies. Auto repair services and liquor stores are also exempt. In related reporting, dozens of companies across the U.S. are arguing their [operations are essential](#). The companies are trying to make the case that their work is essential for the livelihood of their workers and the public good.

UK Prime Minister Boris Johnson [announced](#) the closure of cafes, pubs, restaurants, nightclubs, theaters, cinemas, gyms and leisure centers beginning 03/20/2020. This policy will be reviewed every month. UK residents impacted by business closures will be paid 80% of their usual

wages up to £2,500 a month, assuming they are kept on a company's payroll or on a leave of absence.

Likewise, yesterday [Alaskan](#) State officials joined a growing list of states ordering all schools to close for at least another month. All after-school activities are also suspended during that period. The state also issued a mandate that applies to Fairbanks North Star Borough and Ketchikan Gateway Borough, and states that "personal care services," like nail salons and tattoo shops where people are in close contact, must cease operations to slow the spread of the coronavirus.

Facts and Figures at a Glance

Note: As of 03/17/2020 data will be derived from Johns Hopkins University.

Global

Total Cases: 286,932
Total Fatalities: 11,906
Countries w/ Confirmed Cases: 167

US

Total Cases: 19,931
Total Fatalities: 275
Jurisdictions Reporting Cases: 54 (50 states, District of Columbia, Puerto Rico, Guam, and US Virgin Islands)

Highest COVID-19 Case Count - US

States

1. New York: 8,403
2. Washington State: 1,524
3. California: 1,247

Counties

1. New York City (NY): 5,653
2. Westchester County (NY): 1,091
3. King County (WA): 793
4. Nassau County (NY): 754
5. Suffolk County (NY): 459
6. Cook County (IL): 411
7. Snohomish County (WA): 385
8. Los Angeles County (CA): 292
9. Wayne County (MI): 216
10. Santa Clara County (CA): 196

Virus Distribution Data

Newly-Impacted Regions

Global

- Fiji
- New Caledonia
- El Salvador
- Nicaragua
- Chad
- Niger

Case Totals Near Major Cities

Bay Area, CA, US

- San Francisco County
 - Confirmed: 76
 - Deaths: 0
- San Mateo County
 - Confirmed: 100
 - Deaths: 1
- Santa Clara County
 - Confirmed: 196
 - Deaths: 8
- Contra Costa
 - Confirmed: 46
 - Deaths: 1
- Alameda County
 - Confirmed: 45
 - Deaths: 0
- Sonoma County
 - Confirmed: 11
 - Deaths: 0
- Solano County
 - Confirmed: 13
 - Deaths: 0
- Marin County
 - Confirmed: 38
 - Deaths: 0

Boston Metro Area, MA, US

- Suffolk County
 - Confirmed: 86
 - Deaths: 1
- Middlesex
 - Confirmed: 144
 - Deaths: 0
- Norfolk
 - Confirmed: 64
 - Deaths: 0
- Berkshire
 - Confirmed: 20
 - Deaths: 0
- Worcester
 - Confirmed: 19
 - Deaths: 0
- Essex
 - Confirmed: 29
 - Deaths: 0
- Plymouth
 - Confirmed: 11
 - Deaths: 0

Chicago Metro Area, IL, US

- Cook County/Chicago
 - Confirmed: 411
 - Deaths: 3
- Kane County
 - Confirmed: 8
 - Deaths: 0
- McHenry County
 - Confirmed: 8
 - Deaths: 0
- Lake County
 - Confirmed: 53
 - Deaths: 0
- Dupage County
 - Confirmed: 57
 - Deaths: 0
- Deaths: 0
- Rockland County
 - Confirmed: 101
 - Deaths: 1
- Suffolk County
 - Confirmed: 459
 - Deaths: 7
- Bergen County, NJ
 - Confirmed: 249
 - Deaths: 3

Greater Los Angeles, CA, US

- Los Angeles County
 - Confirmed: 292
 - Deaths: 2
- Orange County
 - Confirmed: 65
 - Deaths: 0
- Riverside County
 - Confirmed: 28
 - Deaths: 4
- Ventura County:
 - Confirmed: 17
 - Deaths: 0

NYC Metro Area, NY, US

- New York City
 - Confirmed: 5,653
 - Deaths: 43
- Hudson County, NJ
 - Confirmed: 66
 - Deaths: 1
- Nassau County
 - Confirmed: 754
 - Deaths: 4
- Westchester County
 - Confirmed: 1,091

Washington DC Metro Area, US

- Washington DC
 - Confirmed: 77
 - Deaths: 1
- Loudoun County, VA
 - Confirmed: 9
 - Deaths: 0
- Fairfax County, VA
 - Confirmed: 16
 - Deaths: 0
- Charles County, MD
 - Confirmed: 2
 - Deaths: 0
- Arlington County, VA
 - Confirmed: 17
 - Deaths: 0
- Maryland, US
 - Confirmed: 150
 - Deaths: 1
- Virginia, US
 - Confirmed: 116
 - Deaths: 2

London, UK

- Confirmed:
 - UK: 3,983
 - London: 1,588
- Deaths:
 - UK: 177
 - London: *Data Unavailable*

Active States of Emergency

WA	02/29/2020	CO	03/10/2020	MO	03/13/2020
FL	03/01/2020	CT	03/10/2020	AL	03/13/2020
CA	03/04/2020	MA	03/10/2020	NH	03/13/2020
HI	03/04/2020	MI	03/10/2020	SC	03/13/2020
MD	03/05/2020	NM	03/11/2020	ID	03/13/2020
IN	03/06/2020	AZ	03/11/2020	NE	03/13/2020
KY	03/06/2020	AK	03/11/2020	MN	03/13/2020
UT	03/06/2020	LA	03/11/2020	GA	03/13/2020
PA	03/06/2020	AR	03/11/2020	TX	03/13/2020
NY	03/07/2020	DC	03/11/2020	MS	03/14/2020
OR	03/08/2020	TN	03/12/2020	VT	03/14/2020
IA	03/09/2020	VA	03/12/2020	SD	03/13/2020
IL	03/09/2020	KS	03/12/2020	ND	03/13/2020
NJ	03/09/2020	DE	03/12/2020	WY	03/13/2020
OH	03/09/2020	MT	03/12/2020	OK	03/15/2020
RI	03/09/2020	NV	03/12/2020	ME	03/15/2020
NC	03/10/2020	WI	03/12/2020	WV	03/16/2020

Governmental Guidance

CDC

- The CDC has issued risk assessments for impacted areas, where Tier 1 is the lowest risk and Tier 4 is the highest risk:
 - Tier 4 (Widespread sustained transmission and restrictions on entry to the United States):
 - China
 - Iran
 - Most European Countries
 - United Kingdom and Ireland
 - Tier 3 (Widespread sustained transmission):
 - South Korea
 - Malaysia
 - Tier 2 (Sustained community transmission):
 - Global
 - Tier 1 (Risk of limited community transmission):

WHO

World Health Organization has published information on preparing your workplace for COVID-19:

This document gives advice on:

1. Simple ways to prevent the spread of COVID-19 in your workplace
2. How to manage COVID-19 risks when organizing meetings & events
3. Things to consider when you and your employees travel
4. Getting your workplace ready in case COVID-19 arrives in your community

For further information see:

www.who.int/docs/default-source/coronaviruse/getting-workplace-ready-for-covid-19.pdf?sfvrsn=359a81e7_6

Department of State

- The State Department issued travel advisories according to the following levels:
 - Level 4 - Do not travel:
 - Global as of 03/19/2020
 - Level 3 - Reconsider travel
 - Level 2 - Exercise increased caution
 - Level 1 - Exercise normal precautions

Prior to any travel outside the United States, the State Department recommends checking its website for COVID-19-specific travel advisories [here](#).

State & Local Governments

California

As of 03/21/2020, California has 1,247 confirmed COVID-19 cases and 24 deaths. Governor Gavin Newsom [announced](#) Friday the deployment of the California National Guard to help distribute food amid the coronavirus pandemic. The order came one day after Newsom issued a stay-at-home order.

Illinois

As of 03/21/2020, Illinois has 585 confirmed cases of COVID-19 and five deaths. Governor J.B. Pritzker [issued](#) a “stay-at-home” order starting at 5:00 p.m. Saturday through at least April 7 in an attempt to slow down the COVID-19 spread. The order prohibits any gatherings larger than 10 people and bans residents from socializing in person with people outside their household. Each community will decide whether green space will remain open for recreational use.

Massachusetts

As of 03/21/2020, Massachusetts has 413 confirmed cases of COVID-19 and one death. Governor Charlie Baker said Friday that Massachusetts was not planning a forced shelter-in-place, but urged residents to obey the restrictions regarding social distancing.

New York

As of 03/21/2020, New York has 8,403 confirmed COVID-19 cases and 46 deaths. The Trump administration issued a [major disaster declaration](#) late Friday for New York. New York is preparing to ration ventilators for its sick COVID-19 patients, as Governor Andrew Cuomo

estimates the state may require 30,000 ventilators to meet demand. New York is seeing a shortage of other medical equipment such as masks, surgical gloves, and blood.

Washington, DC

As of 03/21/2020, the Washington, DC-region has a total of 343 confirmed COVID-19 cases: 116 in Virginia, 150 in Maryland, and 77 in the District. Washington, DC [announced](#) Friday its first novel coronavirus-related death. The 59-year-old man was hospitalized last week with coronavirus symptoms and later tested positive. The DC Department of Health said he had other underlying medical conditions.

Publicly Available Company Policies

Note: New additions are highlighted in blue.

Office Closures

- **Carta:** All offices closed until 03/31.
- **Confluent:** All offices closed, globally.
- **Fastly:** Closing all offices, including San Francisco.
- **Gap:** Corporate office in New York closed due to COVID-19 positive test in that office.
- **GoCardless:** All offices closed until further notice.
- **Grammarly:** San Francisco, New York, and Vancouver employees mandated to work from home; Kyiv employees encouraged to work from home.
- **Nike:** European HQ.
- **Masterclass:** Los Angeles & San Francisco offices working from home.
- **Moz:** Closing Seattle and Vancouver offices until 03/19.
- **OKCoin:** Mandated to work from home in San Francisco and Malta locations effectively.
- **OTICON:** Closed down Danish headquarters and asked employees to work remotely.
- **PhRMA:** Closed DC headquarters.
- **United Airlines:** Offering employees up to 6 months unpaid leave.

Remote Work/Interviews

- **23andMe:** Encouraging work from home; empowering employees to work from home based on their own situation (response to school closures, sick household members, etc.).
- **Adobe:** Asking Seattle and Bay Area employees to work from home through 03/23.
- **ADP:** Enabling work from home capabilities.
- **Airbnb:** San Francisco employees encouraged to work from home and no approval needed. Seattle office closed.
- **Amazon:** All onsite candidate interviews moving to video.
- **Autodesk:** Encouraging work from home.
- **Boeing:** Encouraging Seattle-area employees to work from home.
- **Bullhorn:** "Suspended" handshakes, a switch to Zoom meetings whenever possible, and implemented an external visitor process that sees their policy communicated to visitors 24 hours before a meeting, encouraging cancellation or online meetings where symptoms may be experienced. No office closures at this time.
- **Box:** Work from home for all locations.
- **ButcherBox:** Mandatory work from home starting 03/16.
- **Catalyst:** Work from home (New York) on a week-by-week basis.

- **Cloudera:** Suspended all non-essential travel and mandated work from home for all employees, globally. Onboarding to be done virtually. Restricted all travel to China, Bangalore, Iran, Hong Kong, Japan, Italy, and South Korea. Restricting visitor access in all our offices to business critical meetings only. Suspending meal services in all offices globally. Interviews with candidates via videoconferencing.
- **Coinbase:** Optional work from home starting 03/09, also providing \$250 stipend per employee for video conferencing equipment.
- **Confluent:** Requiring work from home globally; all interviews transitioning to remote.
- **Dialpad:** All employees are required to work from home.
- **DNAnexus:** All employees strongly encouraged to work from home from both San Francisco and Mountain View offices.
- **Docusign:** Requiring remote work.
- **Dolby:** Option to work remote.
- **Drift:** Work from home required across all offices (Boston, San Francisco, Tampa and Seattle). Reassessing every Friday.
- **eCarta:** Work from home, Seattle and San Francisco offices shut down.
- **Elastic:** Mandatory work from home.
- **Eli Lilly and Co:** Encouraging all US employees to work from home if possible.
- **Ellucian:** Candidate interview travel has been suspended for 45 days; opting to utilize video interviewing instead. All candidates have a choice to either come into office or opt for a video interview.
- **Expedia:** Encouraging Seattle employees to work from home.
- **Facebook:** Moving to all video interviews to restrict visits to physical offices, asked all Bay Area employees to work from home through March.
- **Federal Reserve Bank of Chicago:** Non-critical employees asked to work remotely for 2 weeks (starting 03/12) then reevaluate.
- **Glassdoor:** All employees asked to work from home until further notice (same parent company as Indeed).
- **Grammarly:** San Francisco, New York, and Vancouver employees mandated to work from home; Kyiv employees encouraged to work from home; conducting all candidate interviews by video.
- **Genie:** Work from home, Redmond Office.
- **Google:** Asking all North American employees to work from home until 04/10.
- **Handshake:** Encouraging all employees to work from home 03/09 to 03/20 (reviewed weekly to determine if they extend).
- **HelloBetter.de:** Instituted work from home for all global employees.
- **Hometree.co.uk:** Running work from home mandatory policy until further government advice for all employees.
- **Houzz:** Work from home in Bay Area, but offices will still be open for those who want to work in office. Will be monitored on a week-to-week basis.
- **Indeed:** All employees requested to work from home (same parent company as Glassdoor) -- possibly for the whole year.

- **Intel:** Recommending employees work from home.
- **Internxt:** All employees are encouraged to work from home.
- **JP Morgan:** Managers requested that about 10% of staff across its consumer bank work remotely as part of the plan's resiliency testing.
- **LA Times:** Restricting employee travel and encouraging work from home.
- **LinkedIn:** Bay Area employees asked to work from home through March.
- **Lyft:** San Francisco and Seattle employees encouraged to work from home.
- **OKCoin:** Allowing employees to work from home. Preparing for mandatory work from home should situations change near office locations.
- **Okta:** Directed Bellevue, San Francisco, San Jose, London, Paris, Amsterdam employees to work from home.
- **PolicyGenius:** Optional work from home.
- **Pure Storage:** Work from home, Seattle / Bellevue, Mountain View.
- **Mattermost:** Majority of staff is remote, recommend work from home for San Francisco.
- **Microsoft:** Allowing San Francisco/Seattle employees to work from home through March 9th.
 - Official Microsoft guidance.
 - LinkedIn tells Bay Area employees to work from home through March, if possible, and is also asking employees to postpone all non-essential business travel and will not participate in external events in March and April.
- **Mozilla:** Strongly recommending work from home for all employees until 03/27. Non-essential travel cancelled until further notice.
- **Nextdoor:** All global employees strongly encouraged to work from home; all interviews are to be conducted remotely.
- **Nordstrom:** Encouraging employees to work from home if they can.
- **PolicyGenius:** Optional work from home.
- **Reflektive:** All domestic and international travel on hold, no visitors in offices, supporting work from home, all interviews done remotely. Reassessing every weekend.
- **REI:** Seattle, work from home.
- **Salesforce:** Encouraging Seattle Salesforce/Tableau employees to work from home through March. Strongly encouraging all employees across California and New York to work remotely for the month of March.
- **Securities and Exchange Commission (SEC):** Asked DC employees to telework.
- **Sisense:** Highly encouraged work from home for all locations.
- **Spotify:** New York employees asked to work remotely through March.
- **Square:** Suspended visitors and certain teams being encouraged to work from home in Seattle, San Francisco, Dublin, Ireland, and London.
- **StayingHomeClub:** A running list of tech companies work from home/travel/conference plans.
- **Stride:** Work from home is strongly encouraged in San Francisco (only office location), but the office will still be open for those who want to work in office. Will be monitored on a daily/weekly basis.

- **Stripe:** Encouraging/requiring work from home, suspending visitors, video interviews.
- **SurveyMonkey:** Allowing employees flexibility to work from home through 03/20.
- **Textio:** Encouraging remote work and suspending travel.
- **Thrive Digital:** Team members recommended to work from home until 03/31; however, the office remains open (for now). In-person interviews have been rescheduled to video calls. Non-team member office visitors are restricted.
- **TMobile:** Work from home, Seattle/Bellevue.
- **Twitter:** Encouraging all employees who are able to work from home, video interviews.
- **VSCO:** Offering optional work from home, no social visitors, video interviews.
- **WalkMe:** All employees have been notified that they can work from home if they feel more secure. Currently, the offices are open. A full day of remote work is implied in the Tel Aviv office to test the systems on Sunday (work day).
- **Washington Post:** Asking employees to work from home.
- **WSurveyMonkey:** Allowing employees flexibility to work from home through 03/20.
- **XWiki:** Fully remote until further notice.

Travel Restrictions

- **23andMe:** Banned travel to affected areas as listed by CDC and instructed employees to only attend critical conferences.
- **ADP:** All non-essential business travel is limited.
- **Amazon:** All non-essential travel (including all onsite candidate interviews, now going to video).
- **Aptiv:** All travel (currently through end of March).
- **Atlassian:** Restricting to only high-business impact travel.
- **Audley Travel:** All inter-office travel; only essential familiarization trips to non-categorised areas.
- **Automattic:** Pausing all business travel and discouraging personal travel.
- **Bottomline Technologies:** All non-essential travel (including all onsite candidate interviews now going to video).
- **Bullhorn:** Maintaining a list of regions where travel is banned and restrictions on all cross-border travel without authorization.
- **Cargill:** Suspending all non-essential business travel.
- **Cloudera:** Suspended all non-essential travel and mandated work from home for all employees, globally.
- **Comparably:** Suspended all non-essential travel and mandated work from home for all employees.
- **Confluent:** Suspending all non-essential travel. Implementing "no questions asked" opt-out for essential travel.
- **CVSHealth/Aetna:** Suspending travel until May.

- **DNAnexus:** Restricted all travel unless reviewed and approved by C-Level.
- **Dolby:** All company travel restricted.
- **Drift:** All company travel restricted.
- **Ellucian:** Suspending all internal employee travel for 45 days; employees are able to opt-out of any and all customer travel.
- **Ford:** Restricting all global travel until 03/27.
- **GitHub:** All non-essential travel.
- **Gitlab:** Restricted all non-essential, cross-border travel.
- **GoCardless:** All business travel until the end of April.
- **Google:** All international travel.
- **Grammarly:** Pausing all business travel and discouraging personal travel.
- **Handshake:** Travel only for key business priorities.
- **Harvard University:** Restricting travel through 04/20.
- **Havas:** Per an internal memo issued by CEO Yannick Bolloré, business travel to areas including South East Asia, Milan and Venice is suspended. Employees coming back from a business trip in those areas have to work from home for 14 days.
- **HelloBetter.de:** Banned international travel.
- **IBM:** Suspending travel for internal meetings, external events with 1,000+ attendees, non-critical international travel.
- **inFeedo:** Pausing all non-essential travel.
- **Intel:** All Travel and Conferences attendance or meetings with people you can't track where they came from.
- **JP Morgan Chase:** Restricting non-essential global and domestic travel.
- **LA Times:** Restricting employee travel and encouraging work from home.
- **L'Oreal:** Suspending business travel through March.
- **Mattermost:** Strongly discouraging international business travel and non-essential local travel.
- **Nestle:** Restricting international business travel until mid-March.
- **Nike:** Partial restrictions.
- **OKCoin:** Suspended all business travel until further notice; discouraging personal travel.
- **Okta:** Restricting non-essential travel.
- **Paycor:** All non-essential travel (including candidate travel).
- **Shoppable:** All non-essential travel.
- **Salesforce:** All non-essential travel.
- **Sisense:** Suspended all non-essential travel, supporting employee requests for travel avoidance.
- **Slack:** Strongly encouraging all employees to work from home through the end of March. Tokyo & Osaka offices closed.
- **Square:** Pausing all business travel and discouraging personal travel.
- **Stanford University:** Moves all classes online for the remainder of winter quarter.

- **Stride:** Pausing all business travel; self-quarantine (14 days) after personal international/domestic travel case-by-case depending on where they are coming from.
- **Stripe:** Paused global business travel.
- **Tenable:** Onboarding of new members is now online only.
- **Textio:** Encouraging remote work and suspending travel.
- **Thrive Digital:** All business and conference travel is temporarily restricted. Team member travel is not restricted, but those returning from breakout zones will be required to work from home for a period of 14 days.
- **Twitter:** All non-essential travel (including candidate travel).
- **Unilever:** Restricted to “business-critical” travel.
- **Vertiv:** International and domestic trips restricted.
- **VSCO:** Paused international travel and non-essential domestic travel.
- **WalkMe:** All non-essential business travel is limited, including candidates and international travel.
- **World Bank/IMF:** Moving spring meetings to virtual.

School Closures Near Major Cities

Note: EoS stands for End of Semester

Bay Area School Districts and Colleges

Note: Due to large number of school closures see [here](#) for additional closings.

All San Francisco Public Schools (SFUSD) are closed until April 3.

Boston Metro Area School Districts and Colleges

Note: Due to large number of school closures see [here](#) for additional closings.

All Boston public and private primary and secondary schools are closed until April 7.

Chicago Metro Area School Districts and Colleges

Note: Due to large number of school closures see [here](#) for additional closings.

All Illinois K-12 schools are closed until March 27.

All Chicago Public Schools are closed until April 20.

DC Metro Area School Districts and Colleges

Note: Due to large number of school closures see [here](#) for additional closings.

All District of Columbia Public Schools are closed until March 31.

All Virginia K-12 schools are closed until March 27.

All Maryland K-12 schools are closed until March 27.

Greater Los Angeles School Districts and Colleges

Note: Due to large number of school closures see [here](#) for additional closings.

NYC Metro Area School Districts and Colleges

Note: Due to large number of school closures see [here](#) for additional closings.

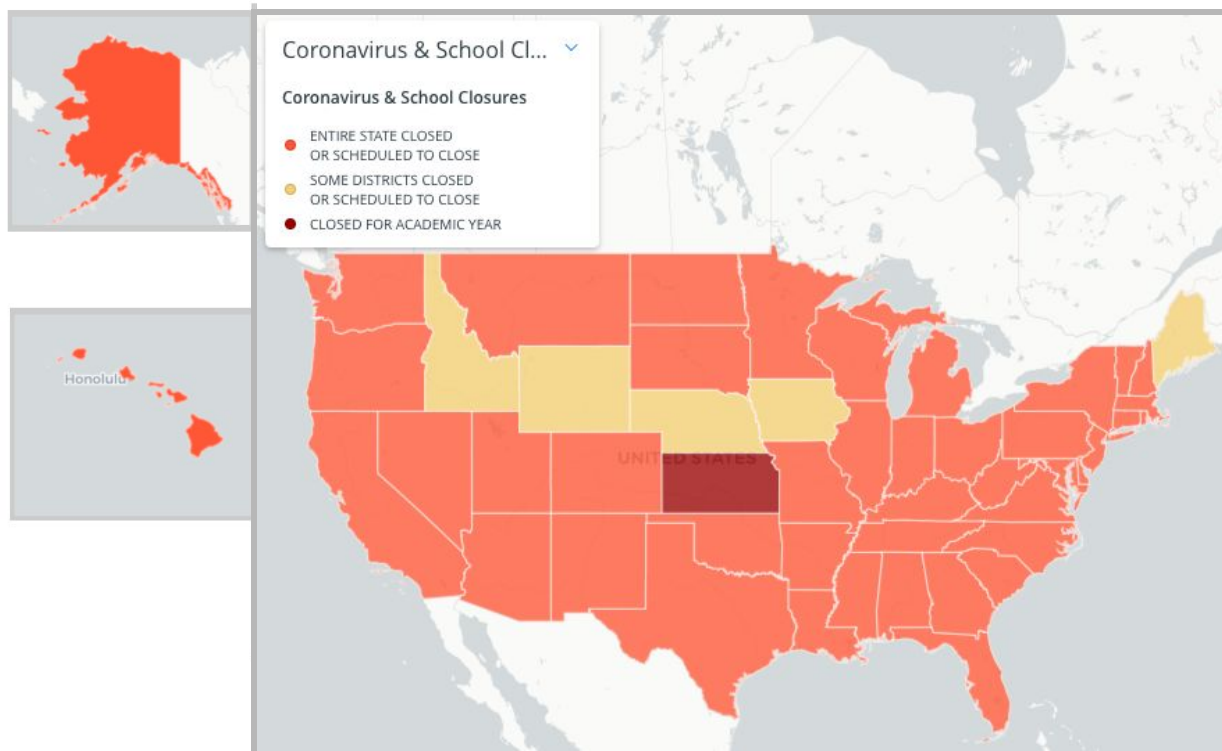
All New York City public schools are closed until April 20.

London, UK School Districts and Colleges

Note: To check for local school closures in the UK see [here](#).

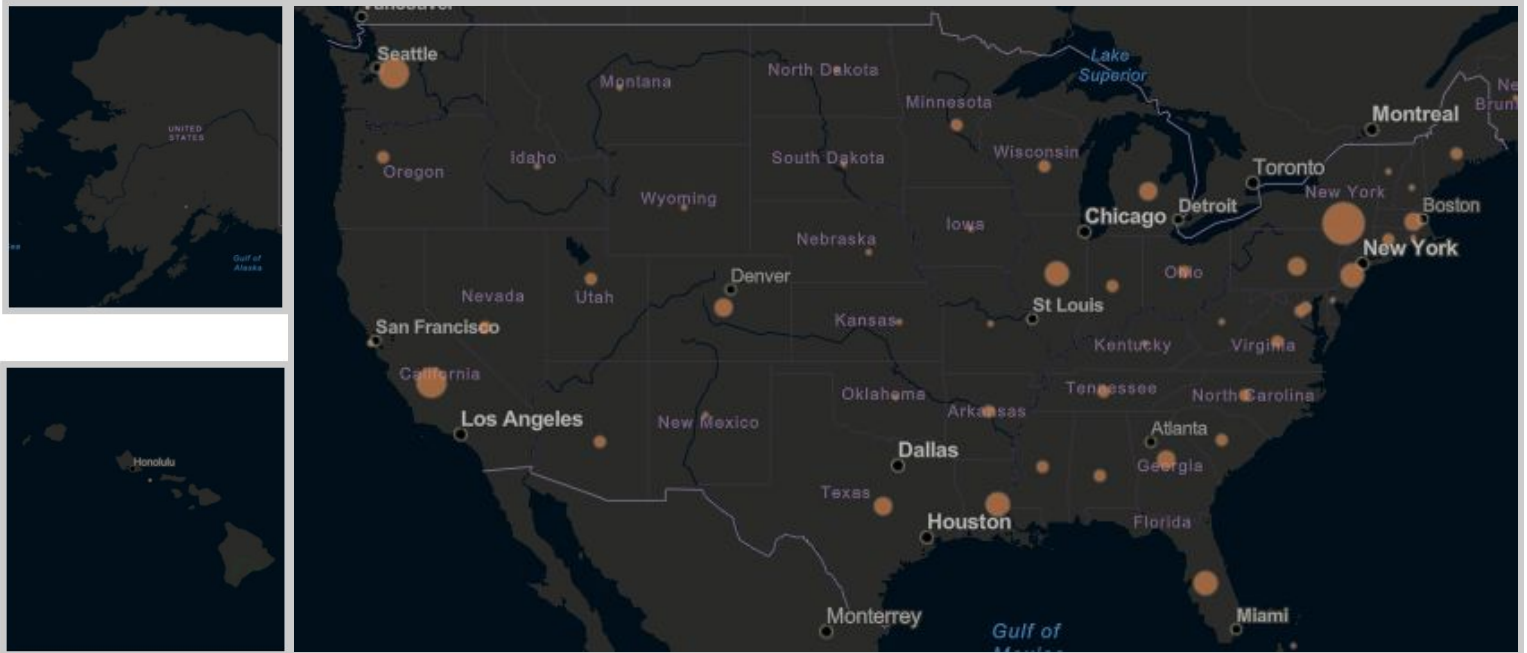
All schools in England and Northern Ireland are closed from March 20 until further notice.

Map of Active School Closures - US



Source: www.edweek.org/ew/section/multimedia/map-coronavirus-and-school-closures.html

Map of Active Reported Cases - US



Source: <https://www.arcgis.com/apps/opsdashboard/index.html#/bda7594740fd40299423467b48e9ecf6>

Map of Active Reported Cases - Global



Source: <https://www.arcgis.com/apps/opsdashboard/index.html#/bda7594740fd40299423467b48e9ecf6>

End Report