



RiskIQ i3:

COVID-19 Daily Update

03/26/2020

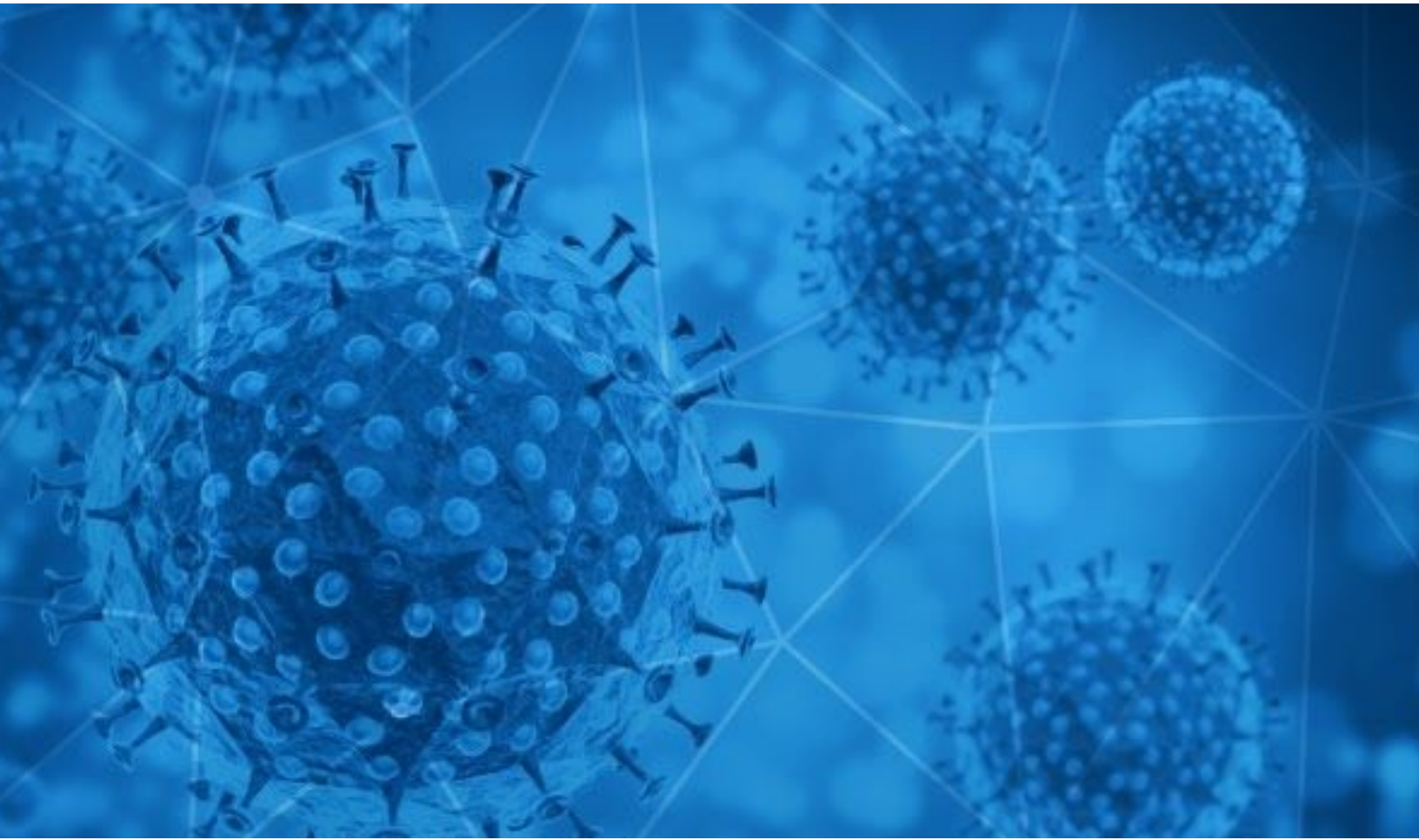


Table of Contents

Methodology	3
Disclaimer	3
Notable Events: Previous 24 Hours	4
Digital Exploitation	6
New Blacklist Data	7
COVID-19 Email Spam Statistics	9
COVID-19 Host, Domain, and Mobile App Tracking	13
Consumer Landscape	13
Facts and Figures at a Glance	16
Global	16
U.S.	16
Highest COVID-19 Case Count - U.S.	16
Stay-At-Home/Shelter-In-Place Orders	17
State Start Date End Date	17
Active States of Emergency	18
Virus Distribution Data	19
Newly-Impacted Regions	19
Case Totals Near Major Cities	19
Governmental Guidance	22
CDC	22
WHO	23
Department of State	23
State & Local Governments	24
School Closures Near Major Cities	25
Map of Active School Closures - US	27
Map of Active Reported Cases - U.S.	28
Map of Active Reported Cases - Global	29

Methodology

The information provided in this report is limited to open source and publicly available data discovered through standard, commonly known browsing techniques and keyword searches. To provide efficient results, RiskIQ may use websites that require payment in exchange for aggregation of data that is otherwise publicly available without payment and could be obtained by anyone accessing the correct sites or engaging the correct third parties to obtain the information. Information presented in this report is cross-checked against multiple sources for full verification; however, some assessments and conclusions are based on incomplete information and represent the RiskIQ analyst's judgment based on patterns and data available.

Disclaimer

The information provided in this report is "as-is" and Customer acknowledges and agrees that RiskIQ makes no representation or warranty, express or implied, as to the accuracy or completeness of the information. Customer agrees that RiskIQ shall not have any liability resulting from Customer's use of this information.

Notable Events: Previous 24 Hours

The [ministers of the G7](#)—consisting of the U.S., UK, Canada, France, Germany, Italy, and Japan—could not agree on a joint statement due to Secretary of State Mike Pompeo’s insistence the virus be called the “Wuhan Virus.” The G7 ministers also discussed whether China used an “intentional disinformation campaign” to downplay its role in the growing pandemic. The meeting—originally scheduled to be in Pittsburgh—was changed to a four-hour video conference in response to the outbreak.

The U.S. recorded its [deadliest single day](#) on Wednesday, 03/25/2020, with 223 reported fatalities. Experts anticipate numbers of cases will increase sharply as more tests are administered and analyzed.

New Orleans, which has the world’s highest growth rate of COVID-19 cases, is on pace to become the [next epicenter](#) of the outbreak in the United States. Authorities warn the number of cases could overwhelm hospitals by 04/04/2020. President Trump issued a major federal disaster declaration for Louisiana on Tuesday, 03/24/2020, which will free up federal funds and resources for the state.

Chicago Mayor Lori Lightfoot [threatened to shut down](#) Chicago parks, Millennium Park, the downtown Riverwalk and the entire lakefront if residents continue to ignore the statewide stay-at-home order. Lightfoot instructed Chicago police to break up public gatherings and suggested she will use every tool at her disposal to gain compliance with the stay-at-home order.

Eight sailors aboard the [USS Theodore Roosevelt](#) tested positive for COVID-19 this week. The Navy evacuated four of the eight sailors to Guam and plans to evacuate the other four. Officials are not certain if the virus originated while the ship was docked in Da Nang, Vietnam or if a visiting flight crew brought the virus onboard.

The State Department reported as many as 50,000 Americans are seeking help to [return home](#). Officials said Peru has been particularly challenging, as COVID-19 cases at the civil aviation authority and at the civilian side of the airport necessitated flights be run on the military side of the airport. Officials also reported there are still several thousand Americans in Honduras and between 5,000-7,000 Americans in Ecuador.

According to Apple CEO Tim Cook, Apple [sourced](#) ten million masks for the U.S. and millions more for hard-hit areas in Europe. Cook reported Apple’s operations team continues to work to find and purchase more masks from their supply chain.

The Senate unanimously passed a [\\$2-trillion relief package](#) to help U.S. consumers and businesses. NPR reported the plan includes direct payments to American residents, an expansion of unemployment insurance, billions of dollars in aid to large and small businesses, and significant funding for the healthcare industry. The unemployment insurance expansion allows for four months of full pay rather than the usual three months allowed. \$150 billion is allocated for healthcare, with \$100 billion for hospitals and the health system and \$1 billion for the Indian Health Service. State and local governments will receive \$150 billion to address spending shortages. \$350 billion of the funds will be set aside for small businesses in the form of loans; some of these loans may be forgiven. The House will vote on the bill Friday, 03/27/2020.

New Mexico started using the state's [emergency alert system](#) to push notifications to anyone in the state with a cell phone.

The FBI [shot and killed](#) a Missouri man while investigating a potential domestic terrorism case. The man recently made threats the FBI took seriously, including a threat to attack a hospital in Kansas City, Missouri, partly due to the suspect's belief the hospital is treating COVID-19 cases. The Department of Homeland Security (DHS) and FBI recently warned of threats from extremist groups related to the pandemic. For instance, according to CNN reporting, DHS counterterrorism officials reported white supremacists may be urging infected individuals to intentionally spread the virus in minority communities and houses of worship.

Los Angeles Mayor Eric Garcetti warned Angelenos the [shelter-in-place](#) order could last at least two months, possibly longer. Garcetti also warned against what he called "premature optimism," adding any optimism must be based on data and, currently, the data is not favorable. Garcetti said the city is between six to twelve days away from being in a situation similar to New York City, where the medical systems are overwhelmed by cases of COVID-19.

Digital Exploitation

Hackers are messing with routers' Domain Name System (DNS) settings as telework surges around the world. According to Cyberscoop reporting, attackers have begun to change DNS settings in Linksys routers, pointing users to what they believe is a legitimate website that also includes a pop-up message with information about the pandemic. However, once a user clicks through, a [fake coronavirus-related app](#) may be downloaded containing malware that can perform a host of nefarious activities, according to Liviu Arsene, a global cybersecurity researcher at BitDefender.

The Ginp [banking Trojan](#) is using information about people infected with coronavirus as bait to lure Android users into giving away credit card data, according to Kaspersky daily blog. Ginp opens a web-page called Coronavirus Finder. It has a simple interface that shows the number of people infected with the coronavirus near you and urges you to pay a small sum to see the location of those people. After users input their credit card data, the hackers steal it.

The threat actors behind the [WordPress WP-VCD malware](#) have started to distribute modified versions of Coronavirus plugins that inject a backdoor into a web site, according to BleepingComputer. According to the report, once a WordPress site is compromised by WP-VCD, the malware will attempt to compromise other sites on the same shared host and will routinely connect back to its command & control server to receive new instructions to execute.

Employees are urged to [turn off smart speakers](#) while working from home during the coronavirus over fears of privacy risks. Mishcon de Reya LLP, the UK law firm, advised staff to mute or shut off listening devices like Amazon's Alexa or Google's voice assistant when they talk about client matters at home, according to UK Daily Mail reporting.

New Blacklist Data

hxxps://karieravmiele[.]cz/Covid-19

hxxp://cadastrapromocaocovid-19[.]ml

hxxps://www[.]earth-masks[.]com/

hxxps://covid-19tracker[.]weebly[.]com/submit-new-information[.]html

hxxps://covid-19-prevention-center[.]myshopify[.]com/

hxxps://supplies-for-covid-19[.]myshopify[.]com/

hxxps://anticovid-19[.]co[.]uk/

hxxp://covid-19-byn[.]iaunews[.]com/

hxxps://covid-19-byn[.]iaunews[.]com/

hxxps://covid-19-africa[.]sen[.]ovh/docs/sauvie.zip

hxxps://normalityforcovid-19[.]com/

hxxp://mersrekdocuments[.]jir/Covid/COVID-19/index.php

hxxps://covid-19effect[.]com/password

hxxps://www[.]playbig-fr[.]com/ve/COVID-19/

hxxp://shopcovid-19[.]rf[.]gd/

hxxps://starilionpla[.]website/do/covid-19

hxxp://uk-covid-19-relieve[.]com

hxxps://themasksupplier[.]com/

hxxps://covid-19[.]open-pathology[.]com/

hxxps://cornwall-small-business-support-during-covid-19[.]myshopify[.]com/pages/how-to-redeem-your-gift-certificate

hxxps://covid19signage[.]com/collections/covid-19-banners

hxxps://covidapp-19[.]site/Covid-19tracker.apk

hxxps://permovqu[.]com/COVID-19/banks/directing/atbonline/question.php

hxxps://fmcg-patterns[.]com/COVID-19/banks/directing/atbonline/details.php

hxxp://covid-19news[.]cf/

hxxps://fmcg-patterns[.]com/covid-19/banks/directing/atbonline/details.php

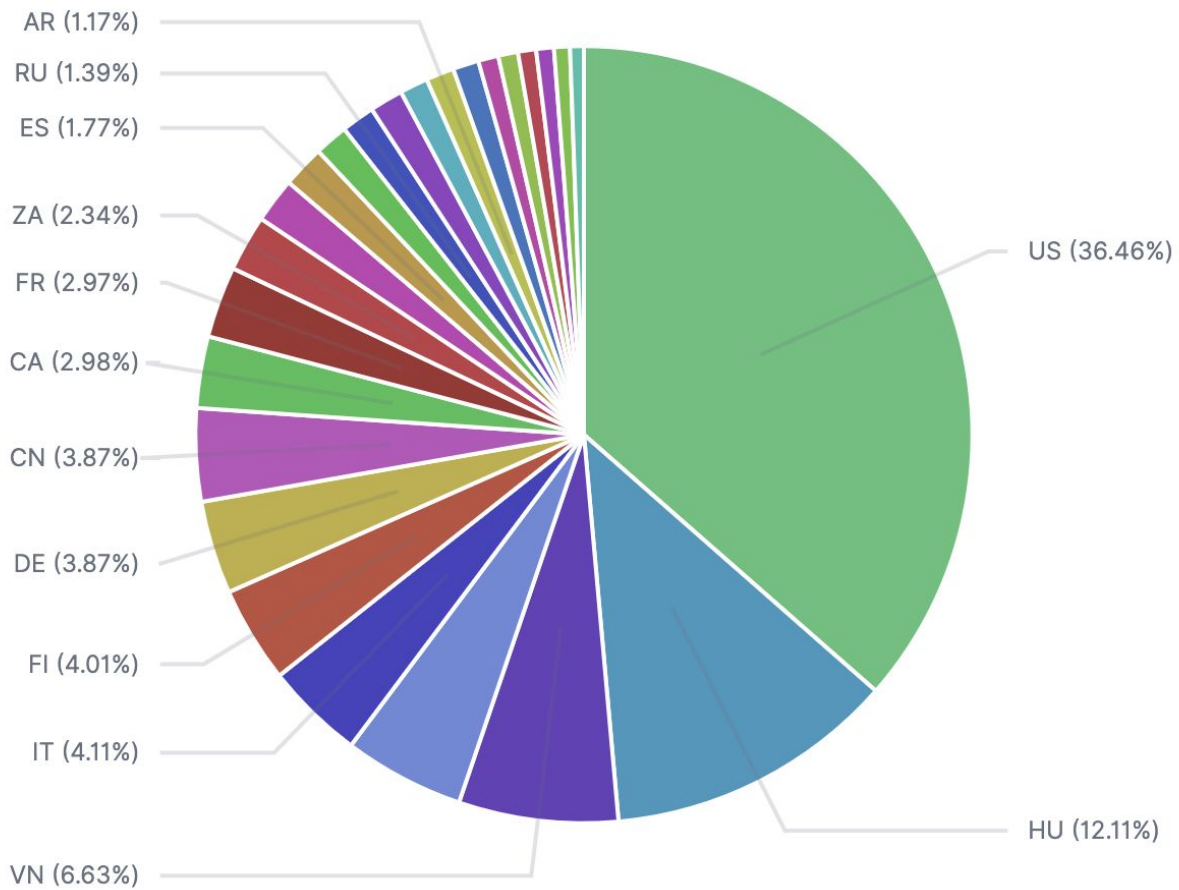
hxxps://covid-19news[.]cf/

hxxps://covid-19[.]xxx-wa[.]com/

hxxp://iecfab[.]xyz/covid-19/

COVID-19 Email Spam Statistics

RiskIQ analyzed its spam box feed for the time period of 03/25/2020-03/26/2020. During this period, RiskIQ analyzed 229,298 spam emails containing either “*corona*” or “*covid*” in the subject line. There were 15,905 unique subject lines observed during the reporting period. The spam emails originated from 34,043 unique sending email domains and 24,779 unique SMTP IP Addresses. Analysts identified 699 emails which sent an executable file for Windows machines.



Spam emails by country of origin

Top 25 Subjects

1. 25,095 - How to protect your body from COVID-19
2. 24,153 - COVID-19
3. 19,635 - 3 shocking reasons why South Koreans aren't dying from coronavirus
4. 8,333 - IMPORTANTE - COVID-19 (CORONA VIRUS)
5. 7,587 - Gojek bersatu dukung mitra lawan COVID-19
6. 5,954 - Coronavirus in Italia: il nostro intervento
7. 4,498 - Fight back against the coronavirus outbreak! Pure Herval Total Defense Immunity Blend
8. 4,402 - The Mask that can prevent Coronavirus now
9. 3,895 - CBZ Group COVID- 19 Response
10. 3,816 - Geef je weerstand een boost tegen het Corona Virus!
11. 3,718 - CORONAVIRUS ALERT: FREE Breathing Masks For USA
12. 2,977 - Coronavirus COVID-19 : aides et accompagnement pour les entreprises
13. 2,863 - The Corona Letter: Essential goods, extraordinary challenges
14. 2,798 - COVID-19 Outbreak | Protect your Family Using this Guide!
15. 2,452 - Extra COVID-19: Wir arbeiten für Sie
16. 2,238 - Coronavirus effect on H-1B: USCIS suspends premium processing of visas | 8 things to remove from your resume
17. 2,183 - The Mask that helps fight Corona-virus!
18. 2,165 - Coronavirus is spreading, this specialized mask can control it
19. 2,160 - Sincerely grateful for your donation to our COVID 19 frontline health workers
20. 2,025 - SANITIZACION Elimina coronavirus
21. 2,009 - CORONAVIRUS ALERT:Breathing Mask
22. 1,941 - COVID-19: Absa Customer Update
23. 1,768 - Feeling Helpless Against Corona?
24. 1,716 - COVID 19 - OUR COMMITMENT TO SUPPORT YOU
25. 1,667 - En Salud Total EPS S ponemos a tu servicio las líneas de atención COVID19

Top Subjects Containing Attachments with Executable Files for Windows Machines (PE/EXEs)

1. 452 - redacted@threatwave.com RE: Covid19"" Latest Tips to stay Immune to Virus !!
2. 157 - Anti-Coronavirus Solution by Lifotronic China
3. 48 - COVID-19 UPDATE !!
4. 10 - Cancelamento ao Hotel COVID-19
5. 8 - Re: Important COVID-19 Working Procedures
6. 5 - CONFIRM YOUR COMPANY BAN ON COVID19 (corona virus)/URGENTLY
7. 4 - COVID-19 KITS AVAILABLE
8. 3 - Stay Safe for COVID-19/ Order Inquiry
9. 3 - Covid-19 Outbreak Management Plans
10. 1 - zthk@netivgator.com RE: Covid19"" Latest Tips to stay Immune to Virus !!
11. 1 - thjh396@souhu.com RE: Covid19"" Latest Tips to stay Immune to Virus !!
12. 1 - taiwan7@netivgator.com RE: Covid19"" Latest Tips to stay Immune to Virus !!
13. 1 - moel.inc@nuevoleon.com RE: Covid19"" Latest Tips to stay Immune to Virus !!
14. 1 - info@eco-systeme.de RE: Covid19"" Latest Tips to stay Immune to Virus !!
15. 1 - ceciliam@izitu.com RE: Covid19"" Latest Tips to stay Immune to Virus !!
16. 1 - Stay Safe form COVID-19/ Order Inquiry
17. 1 - Re:SAFTY CORONA VIRUS AWARENESS WHO
18. 1 - 199802121646.IAA05313@tomcat.ns.net RE: Covid19"" Latest Tips to stay Immune to Virus !!

Top Countries Sending SPAM - Covid/Coronavirus Contained in Subjects (by Geolocation on SMTP IP Address)

1. 76,531 US	14. 2,937 TR
2. 25,436 HU	15. 2,917 RU
3. 13,934 VN	16. 2,914 GB
4. 10,554 IN	17. 2,473 BR
5. 8,631 IT	18. 2,450 AR
6. 8,422 FI	19. 2,267 CL
7. 8,134 DE	20. 1,765 NL
8. 8,120 CN	21. 1,728 KR
9. 6,250 CA	22. 1,577 LA
10. 6,236 FR	23. 1,544 SG
11. 4,915 ZA	24. 1,388 BD
12. 3,927 ZW	25. 1,201 TH
13. 3,708 ES	

COVID-19 Host, Domain, and Mobile App Tracking

RiskIQ gathers data relating to newly-observed hosts and domains containing COVID-19, COVID19, or Coronavirus in the host or domain name and mobile apps containing COVID-19, COVID19, or Coronavirus in the title or description. A summary of data collected is contained in this section.

Domains and Hosts

Domains: 32,424

Hosts: 35,367

Hosts and Domains with Potential Mail Servers: 183

Email-Capable Domains and Hosts: 11,201

Live Hosts and Domains Not Parked: 13,294

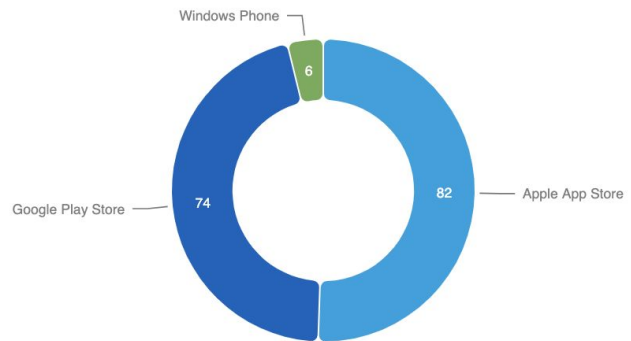
Mobile Apps

1. Apps in Official Stores: 162
 (See Graph)
 - a. Google Play Store: 74
 - b. Apple App Store: 82
 - c. Windows Phone: 6

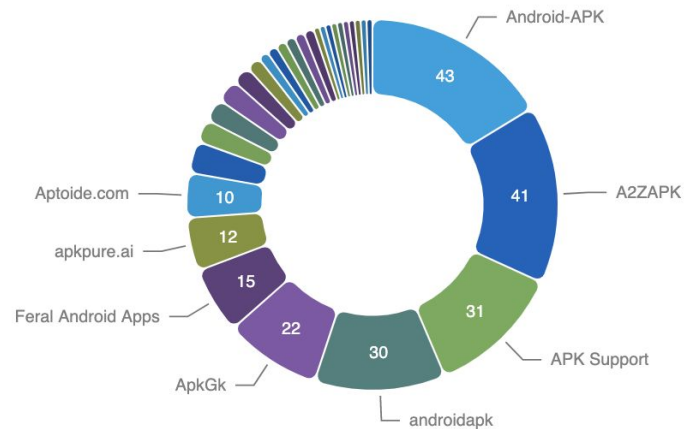
2. Apps in Secondary/Hybrid Stores: 255 (See Graph)

3. Blacklisted Mobile Apps by Store Type:
 - a. Secondary: 10
 - b. Hybrid: 1

Apps on Official Stores



Apps on Secondary and Hybrid Stores by store



Consumer Landscape

Executives are loading up on their company shares as the coronavirus-driven sell-off dents the broader market, signalling the heads of U.S. businesses are confident their companies will rebound, according to CNBC reporting. The heads of [Dell Technologies and Wells Fargo](#) are purchasing shares while outsiders ditch riskier assets, sucking trillions in value from the U.S. stock market in recent weeks.

The number of people who filed claims for unemployment insurance in the US last week surged to an all-time high as COVID-19 spurred layoffs across the country. According to Business Insider, US weekly [jobless claims](#) for the week ending March 21 totaled 3,283,000, the Labor Department reported Thursday, 03/26/2020, exceeding the consensus analyst forecast of 1.5 million. That was up from 281,000 in the previous week, which already marked a two-year high.

Ad spending is falling amid the COVID-19 pandemic—and [Facebook and Google](#) are expected to bear the brunt of the downturn in terms of sheer dollars lost, according to Variety. Facebook and Google together could see more than \$44 billion in worldwide ad revenue evaporate in 2020, Cowen & Co. analysts estimate. Likewise, businesses that sell [information-technology services](#) are expected to be hit hard by the economic impact of COVID-19 as companies across sectors slash IT budgets in the months ahead, according to the Wall Street Journal.

[State Farm Insurance](#) is temporarily shutting down its offices, including the company's Bloomington headquarters, to slow the spread of COVID-19. The company announced Wednesday 3/25/2020 that it had "paused" in-office work in all State Farm facilities in the U.S.

[CVS Health](#) on 03/25/2020 announced it is waiving cost-sharing and co-pays for inpatient hospital admissions related to COVID-19 for Aetna's commercially-insured members, part of several additional steps to help members access the care that they need during the COVID-19 pandemic.

[Lufthansa](#), Austrian Airlines and LATAM have been loading up passenger seats with cargo as they try to keep their aircraft as full as possible. On 03/25/2020, a Lufthansa Airbus A330 passenger aircraft loaded with around 30 tons of medical goods landed in Frankfurt, according to Aircargo News. In addition to the cargo compartments of the Airbus A330, the cabin—including the stowage compartments above the seats—was also loaded with urgent goods, mainly from the medical sector, including masks and other protective equipment.

While COVID-19 has upended business as usual, [retailers](#) have come up with ways to respect the social distancing and shelter-in-place guidelines that can keep their employees and community safe while still serving customers. From curbside pickup to free delivery, they're

finding new ways to work with their customers, according to the National Retail Federation. Likewise, [Starbucks](#) is offering front line COVID-19 responders a free tall cup of coffee to show their appreciation.

A [FedEx employee](#) in Arizona shared a photo of a care package left for delivery drivers thanking them for their work. The box contained rolls of toilet paper, cans of food and bottles of water that was sitting on the porch of a house where the FedEx worker was delivering a package.

Facts and Figures at a Glance

Note: As of 03/17/2020 data will be derived from Johns Hopkins University.

Global

Total Cases: 487,648
Total Fatalities: 22,030
Countries w/ Confirmed Cases: 175

U.S.

Total Cases: 69,197
Total Fatalities: 869
Jurisdictions Reporting Cases: 54 (50 states, District of Columbia, Puerto Rico, Guam, and U.S. Virgin Islands)

Highest COVID-19 Case Count - U.S.

States

1. New York: 33,033
2. New Jersey: 4,407
3. California: 3,196

Counties

1. New York City (NY): 20,011
2. Westchester County (NY): 4,691
3. Nassau County (NY): 3,285
4. Suffolk County (NY): 2,260
5. Cook County (IL): 1,418
6. King County (WA): 1,359
7. Wayne County (MI): 1,122
8. Rockland County (NY): 968
9. Unassigned (NJ): 930
10. Orleans County (LA): 827

Stay-At-Home/Shelter-In-Place Orders

State	Start Date	End Date
California	03/19	TBD
Illinois	03/21	04/07
New Jersey	03/21	TBD
New York	03/22	TBD
Connecticut	03/23	04/22
Kentucky	03/23	TBD
Louisiana	03/23	04/13
Ohio	03/23	04/06
Oregon	03/23	TBD
Washington	03/23	04/06
Delaware	03/24	05/15
Indiana	03/24	04/06
Michigan	03/24	04/13
New Mexico	03/24	04/10
Massachusetts	03/24	04/17
West Virginia	03/24	TBD
Hawaii	03/25	04/30
Wisconsin	03/25	04/24
Vermont	03/25	04/15
Idaho	03/25	04/15
Colorado	03/26	04/11
Minnesota	03/27	04/10

Active States of Emergency

WA	02/29/2020	CO	03/10/2020	MO	03/13/2020
FL	03/01/2020	CT	03/10/2020	AL	03/13/2020
CA	03/04/2020	MA	03/10/2020	NH	03/13/2020
HI	03/04/2020	MI	03/10/2020	SC	03/13/2020
MD	03/05/2020	NM	03/11/2020	ID	03/13/2020
IN	03/06/2020	AZ	03/11/2020	NE	03/13/2020
KY	03/06/2020	AK	03/11/2020	MN	03/13/2020
UT	03/06/2020	LA	03/11/2020	GA	03/13/2020
PA	03/06/2020	AR	03/11/2020	TX	03/13/2020
NY	03/07/2020	DC	03/11/2020	MS	03/14/2020
OR	03/08/2020	TN	03/12/2020	VT	03/14/2020
IA	03/09/2020	VA	03/12/2020	SD	03/13/2020
IL	03/09/2020	KS	03/12/2020	ND	03/13/2020
NJ	03/09/2020	DE	03/12/2020	WY	03/13/2020
OH	03/09/2020	MT	03/12/2020	OK	03/15/2020
RI	03/09/2020	NV	03/12/2020	ME	03/15/2020
NC	03/10/2020	WI	03/12/2020	WV	03/16/2020

Virus Distribution Data

Newly-Impacted Regions

Global

- Lao People's Democratic Republic
- Libya

Case Totals Near Major Cities

Bay Area, CA, U.S.

- San Francisco County
 - Confirmed: 178
 - Deaths: 1
- San Mateo County
 - Confirmed: 165
 - Deaths: 1
- Santa Clara County
 - Confirmed: 459
 - Deaths: 17
- Contra Costa County
 - Confirmed: 108
 - Deaths: 1
- Alameda County
 - Confirmed: 135
 - Deaths: 2
- Sonoma County
 - Confirmed: 37
 - Deaths: 1
- Solano County
 - Confirmed: 31
 - Deaths: 0
- Marin County
 - Confirmed: 60
 - Deaths: 0

Boston Metro Area, MA, U.S.

- Suffolk County
 - Confirmed: 342
 - Deaths: 1
- Middlesex County
 - Confirmed: 446
 - Deaths: 1
- Norfolk County
 - Confirmed: 222
 - Deaths: 1
- Berkshire County
 - Confirmed: 71
 - Deaths: 0
- Worcester County
 - Confirmed: 129
 - Deaths: 2
- Essex County
 - Confirmed: 177
 - Deaths: 0
- Plymouth County
 - Confirmed: 101
 - Deaths: 0

Chicago Metro Area, IL, U.S.

- Cook County/Chicago
 - Confirmed: 1,418
 - Deaths: 14
- Kane County
 - Confirmed: 38
 - Deaths: 1
- McHenry County
 - Confirmed: 19
 - Deaths: 0
- Lake County
 - Confirmed: 139
 - Deaths: 0
- Dupage County
 - Confirmed: 131
 - Deaths: 0

- Nassau County
 - Confirmed: 3,285
 - Deaths: 17
- Westchester County
 - Confirmed: 4,691
 - Deaths: 1
- Rockland County
 - Confirmed: 968
 - Deaths: 5
- Suffolk County
 - Confirmed: 2,260
 - Deaths: 20
- Bergen County, NJ
 - Confirmed: 819
 - Deaths: 6

Greater Los Angeles, CA, U.S.

- Los Angeles County
 - Confirmed: 812
 - Deaths: 13
- Orange County
 - Confirmed: 187
 - Deaths: 1
- Riverside County
 - Confirmed: 105
 - Deaths: 8
- Ventura County:
 - Confirmed: 50
 - Deaths: 1

Washington DC Metro Area, U.S.

- Washington DC
 - Confirmed: 231
 - Deaths: 3
- Loudoun County, VA
 - Confirmed: 20
 - Deaths: 0
- Fairfax County, VA
 - Confirmed: 77
 - Deaths: 1
- Montgomery County, MD
 - Confirmed: 127
 - Deaths: 1
- Arlington County, VA
 - Confirmed: 46
 - Deaths: 0
- Maryland, U.S.
 - Confirmed: 426
 - Deaths: 4
- Virginia, U.S.
 - Confirmed: 403
 - Deaths: 13

NYC Metro Area, NY, U.S.

- New York City
 - Confirmed: 20,011
 - Deaths: 280
- Hudson County, NJ
 - Confirmed: 260
 - Deaths: 1

London, UK

- Confirmed:
 - UK: 9,529
 - London: 3,247
- Deaths:
 - UK: 463
 - London: *Data Unavailable*

Governmental Guidance

CDC

- The CDC has issued risk assessments for impacted areas, where Tier 1 is the lowest risk and Tier 4 is the highest risk:
 - Tier 4 (Widespread sustained transmission and restrictions on entry to the United States):
 - China
 - Iran
 - Most European Countries
 - United Kingdom and Ireland
 - Tier 3 (Widespread sustained transmission):

■ Australia	■ Philippines
■ Brazil	■ Qatar
■ Canada	■ Romania
■ Chile	■ Russia
■ Ecuador	■ Saudi Arabia
■ India	■ Singapore
■ Indonesia	■ South Africa
■ Israel	■ South Korea
■ Japan	■ Thailand
■ Malaysia	■ Turkey
■ Pakistan	
 - Tier 2 (Sustained community transmission):
 - Global
 - Tier 1 (Risk of limited community transmission):

WHO

The World Health Organization has published information on preparing your workplace for COVID-19. This document gives advice on:

1. Simple ways to prevent the spread of COVID-19 in your workplace
2. How to manage COVID-19 risks when organizing meetings & events
3. Things to consider when you and your employees travel
4. Getting your workplace ready in case COVID-19 arrives in your community

For further information see:

www.who.int/docs/default-source/coronaviruse/getting-workplace-ready-for-covid-19.pdf?sfvrsn=359a81e7_6

Department of State

- The State Department issued travel advisories according to the following levels:
 - Level 4 - Do not travel:
 - Global as of 03/19/2020
 - Level 3 - Reconsider travel
 - Level 2 - Exercise increased caution
 - Level 1 - Exercise normal precautions

Prior to any travel outside the United States, the State Department recommends checking its website for COVID-19-specific travel advisories [here](#).

State & Local Governments

California

As of 03/26/2020, California has 3,196 confirmed COVID-19 cases and 67 deaths. The Valley Transportation Authority (Santa Clara) has [suspended](#) service until further notice due to the coronavirus outbreak. A VTA worker recently tested positive for COVID-19. Operators were told to shelter in place until further notice.

Illinois

As of 03/26/2020, Illinois has 1,870 confirmed cases of COVID-19 and 16 deaths. Chicago Mayor Lori Lightfoot [warned](#) residents who have packed local parks, trails and the city's lakefront despite growing numbers of people infected by the coronavirus disease to respect social distancing guidelines. The mayor threatened to shut down the parks and the entire lakefront if residents continue to violate the state's stay-at-home order. She warned that those who don't listen could be ticketed \$500.

Massachusetts

As of 03/26/2020, Massachusetts has 1,838 confirmed cases of COVID-19 and 15 deaths. Massachusetts Governor Charlie Baker [announced](#) Wednesday that Massachusetts schools will remain closed through at least May 4 amid the COVID-19 pandemic. This is an extension of the original closures through April 6.

New York

As of 03/26/2020, New York has 33,033 confirmed COVID-19 cases and 366 deaths. New York City makes up more than half of the statewide cases of COVID-19 with 20,011. Stretches of one street in the Bronx, Brooklyn, Queens, and Manhattan will be shut down to vehicle traffic and opened to pedestrians as a means to make social distancing easier by giving people more space to walk. The streets that will be closed to cars from 10 a.m. to 7 p.m. from Friday to Monday are listed [here](#).

Washington, DC

As of 03/26/2020, the Washington, D.C.-region has a total of 1,060 confirmed COVID-19 cases with 403 in Virginia, 426 in Maryland, and 231 in the District. D.C. Metro closed 19 stations and some entrances at other stations Thursday due to low ridership and to save on cleaning supplies during the coronavirus outbreak. Metro also closed entrances at stations that have several entry points to lower the number of surfaces that need cleaning. For a list of closures, see [here](#).

School Closures Near Major Cities

Bay Area School Districts and Colleges

Note: Due to large number of school closures see [here](#) for additional closings.

All San Francisco Public Schools (SFUSD) are closed until April 3.

Boston Metro Area School Districts and Colleges

Note: Due to large number of school closures see [here](#) for additional closings.

All Massachusetts schools are closed until May 4.

Chicago Metro Area School Districts and Colleges

Note: Due to large number of school closures see [here](#) for additional closings.

All Illinois K-12 schools are closed until March 27.

All Chicago Public Schools are closed until April 20.

DC Metro Area School Districts and Colleges

Note: Due to large number of school closures see [here](#) for additional closings.

All District of Columbia Public Schools are closed until March 31.

All Virginia K-12 schools are closed until March 27.

All Maryland K-12 schools are closed until March 27.

Greater Los Angeles School Districts and Colleges

Note: Due to large number of school closures see [here](#) for additional closings.

NYC Metro Area School Districts and Colleges

Note: Due to large number of school closures see [here](#) for additional closings.

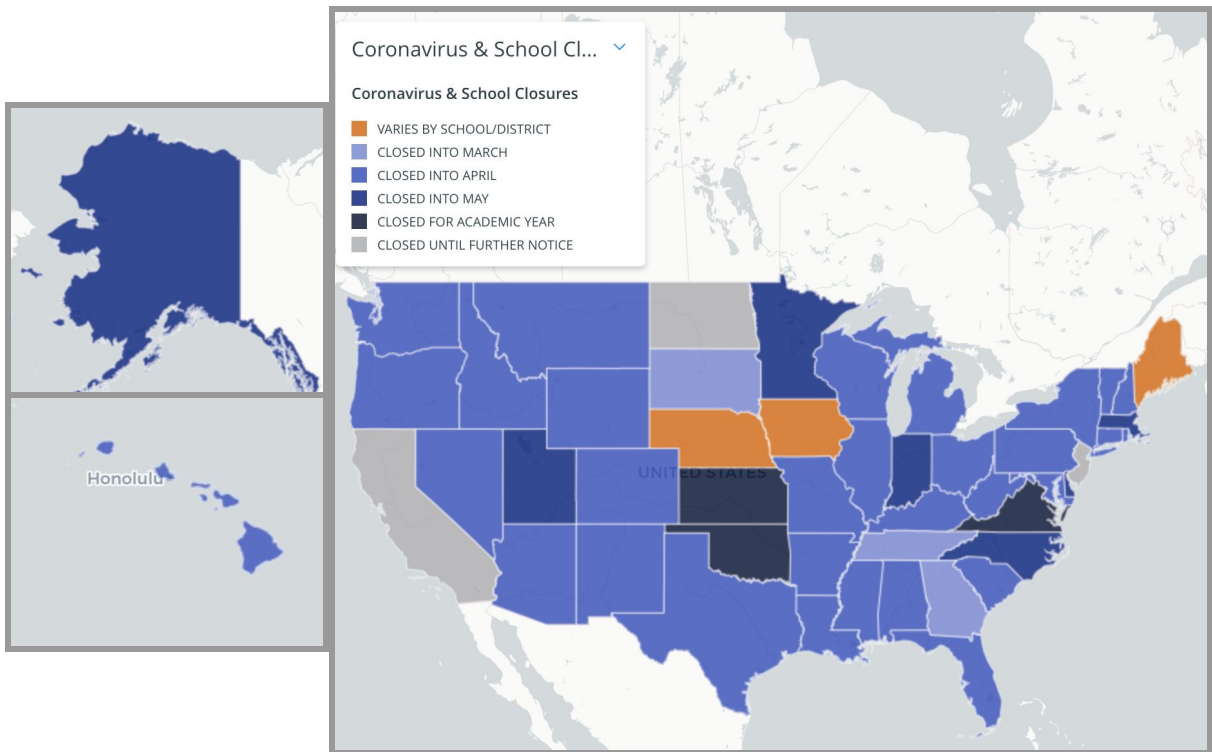
All New York City public schools are closed until April 20.

London, UK School Districts and Colleges

Note: To check for local school closures in the UK see [here](#).

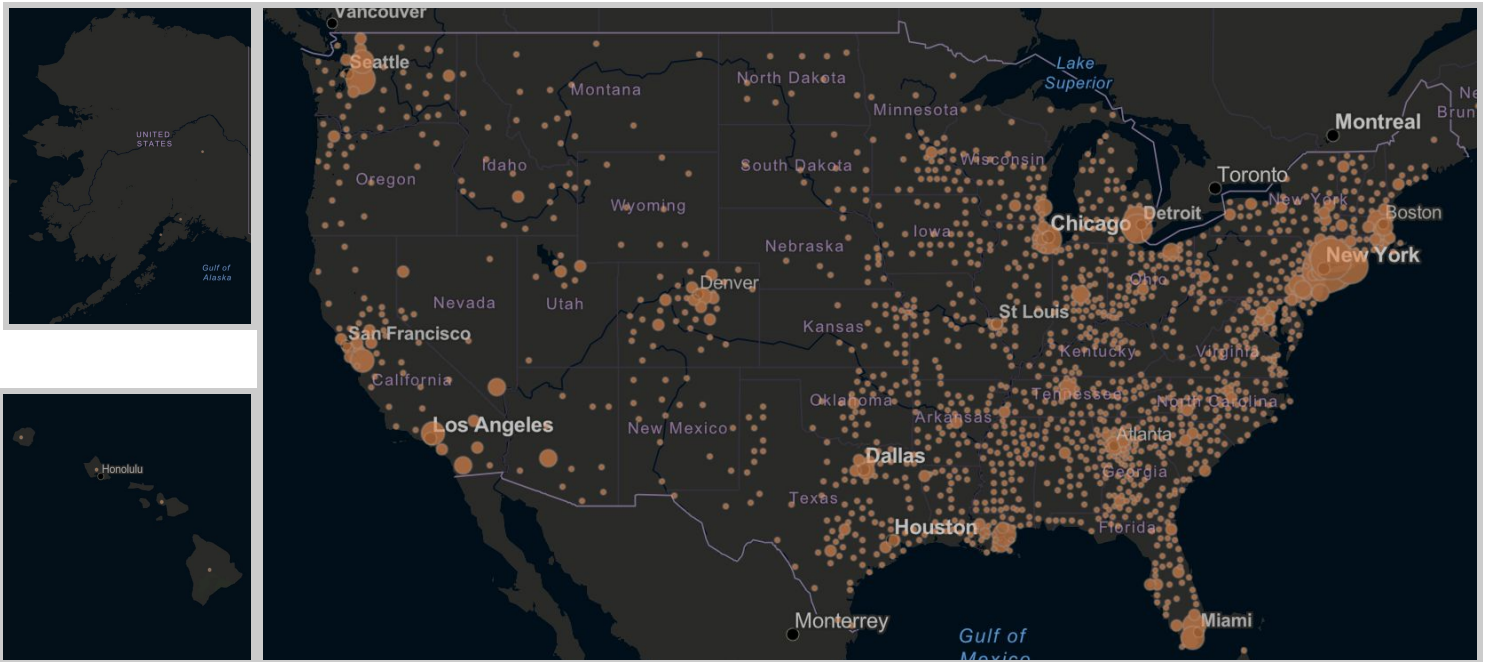
All schools in England and Northern Ireland are closed from March 20 until further notice.

Map of Active School Closures - US



Source: www.edweek.org/ew/section/multimedia/map-coronavirus-and-school-closures.html

Map of Active Reported Cases - U.S.



Source: <https://www.arcgis.com/apps/opdashboard/index.html#/bda7594740fd40299423467b48e9ecf6>

Map of Active Reported Cases - Global



Source: <https://www.arcgis.com/apps/opsdashboard/index.html#/bda7594740fd40299423467b48e9ecf6>

End Report